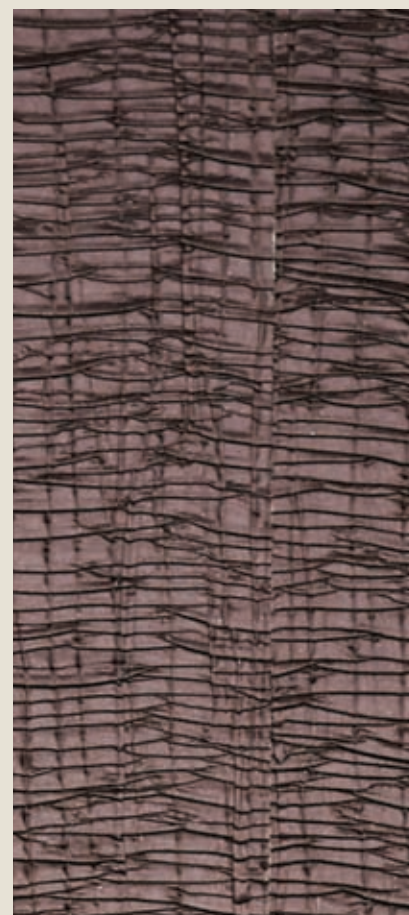


MAY
R
MAY
O
F F



COLLECTIONS WINTER 2015

*Crêpe Suzette*TM
PLEATED FABRIC



MAYA ROMANOFF

Suzette[™]

PLEATED FABRIC



MAYA ROMANOFF

Precious Metals II™

TYPE II 54" VINYL



MAYA ROMANOFF

Weathered Metals II™

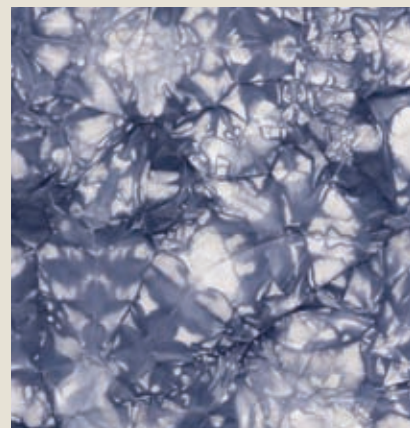
TYPE II 54" VINYL



MAYA ROMANOFF



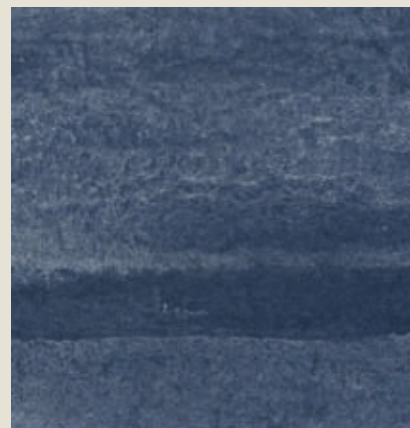
LIMITED EDITION
Indigo Collection
HAND-PAINTED PAPER



Anniversary Collection Crystal



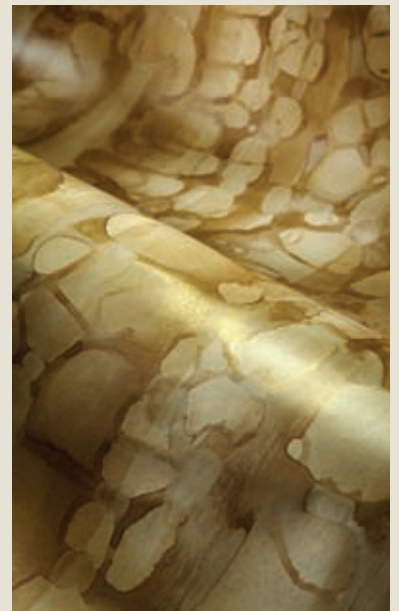
River Bed



Weathered Metals

M A Y A R O M A N O F F

River Bed[™]
HAND-PAINTED PAPER



M A Y A R O M A N O F F

Beadazzled Sparkle Geode™

FLEXIBLE GLASS BEAD WALLCOVERING



MAYA ROMANOFF



Beadazzled Sparkle Geode™

FLEXIBLE GLASS BEAD WALLCOVERING

MAYA ROMANOFF

CRÊPE SUZETTE™

PLEATED FABRIC

Responding to light like a classic silk textile, this triple-pleated fabric wallcovering adds an elegant air to any interior. Paper-backed polyester installs easily, and, because of the pleating and wide roll, seams beautifully. Coordinates perfectly with the single-pleated Suzette.

SUZETTE™

PLEATED FABRIC

A ruched fabric wallcovering that catches light like a classic silk textile. Romantic and refined, paper-backed polyester installs easily, and, because of the pleating and wide roll, seams beautifully. Coordinates perfectly with the triple-pleated Crêpe Suzette.

LIMITED EDITION

INDIGO COLLECTION

HAND-PAINTED PAPER

Inspired by the distinctive blue dye associated with intuition and mindfulness, Maya Romanoff's limited edition collection has its roots in Maya's studies in India and Southeast Asia in the late 1960s. Apprenticing in time-honored fabric dyeing techniques began his lifelong quest to interpret these pigments and methods for the wall. This brand new collection presents three signature designs reinvented in fresh Indigo: Anniversary Crystal, River Bed and Weathered Metals wallpapers – all painted by hand in the Maya Romanoff Chicago studio.

MAYA ROMANOFF

WEATHERED METALS II™

TYPE II 54" VINYL

Hand-painted design now available in washable, UV-resistant, and strippable 54" Type II vinyl. Weathered Metals II was designed with a remarkable large 54" wide by 36" high repeat, creating a subtle, seemingly random pattern. The product has an all-over emboss, metallic print effects and seamless installation.

PRECIOUS METALS II™

TYPE II 54" VINYL

Maya Romanoff's elegant Precious Metals is now available in a washable, UV-resistant, strippable 54" Type II vinyl. Precious Metals II's subtle pattern utilizes Mylar to replicate the refined aesthetic of metal leaf on paper. A unique metallic print provides great reflectivity.

RIVER BED™

HAND-PAINTED PAPER

Created using hand-painted pigments with metallic details, River Bed is a dimensional paper that provides the elegant, calming presence of nature – visually resembling petrified wood or birch bark. Hand-crafted in our Chicago studio. Custom colors and roll lengths available.

BEADAZZLED SPARKLE GEODE™

BEADAZZLED FLEXIBLE GLASS BEAD WALLCOVERING®

Beadazzled Sparkle Geode combines a dense layer of genuine glass beads with a dash of sparkle. The added layer of sparkle makes this diverse surfacing material even more eye-catching. Hand-crafted in our Chicago studio with genuine glass beads, close attention to detail ensures that each panel reflects light beautifully.

MAYA ROMANOFF.COM

CONTACT:

Jessie Devereaux

Marketing Manager, Maya Romanoff

jessie@mayaromanoff.com + 1773 465 6909 x34

CELEBRATING 45 YEARS OF EXTRAORDINARY SURFACING MATERIALS

MAYA ROMANOFF EST. 1969



1969



1972



1974



1982



1988



1996



2003



2005



2010



2013



1941-2014

2014



2014