

# STOP

DO NOT INSTALL UNTIL YOU HAVE READ THESE GUIDELINES

Call Client Services at 1.773.465.6909 immediately if you encounter any difficulties or e-mail [clientservices@mayaromanoff.com](mailto:clientservices@mayaromanoff.com)

## GUIDELINES FOR INSTALLATION ON DRYWALL.\*

Materials may display certain irregularities that are inherent to the manufacturing process.

# Cornerstone™ Vinyl Collections

(MR-FV-26 through 43 Series) Type II Vinyl Wallcovering



## SPECIFICATIONS

### 27" Width

Width Approx. 27" untrimmed (68.6 cm), 6.75 sq ft/yd (0.63 sq m/yd)

Roll Size 9 yd (8.2 m)

Minimum Order 1 roll (9 yd/8.2 m)

Order Increments 1 roll (9 yd/8.2 m)

Repeat Please refer to each collection's specific repeat

Custom Color Contact Client Services

Custom Length Contact Client Services

Fire Rating ASTM E84 Class A, EN 13501 Euroclass B

Content 20 oz. vinyl, Non-woven paper backing

### 54" Width

Width Approx. 54" untrimmed (137.2 cm), 13.5 sq ft/yd (1.25 sq m/yd)

Roll Size 30 yd (27.4 m)

Minimum Order 1 roll (30 yd/27.4 m)

Order Increments 1 roll (30 yd/27.4 m)

Repeat Please refer to each collection's specific repeat

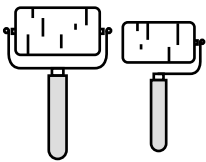
Custom Color 180 yd min. order (164.6 m)

Custom Length Contact Client Services

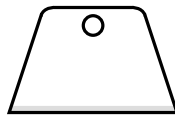
Fire Rating ASTM E84 Class A, EN 13501 Euroclass B

Content 20 oz. vinyl, Non-woven paper backing

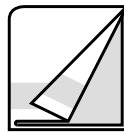
## RECOMMENDED TOOLS



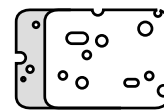
Seam roller & corner seam roller



Plastic smoother



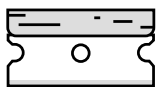
Soft cloth



Sponge



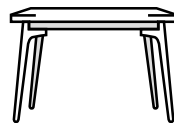
Clean water



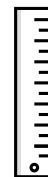
Razor blades



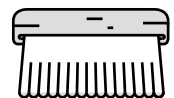
Double cutting tool



Table



Steel straight edge



Soft-bristled nylon brush

## WALL PREPARATION



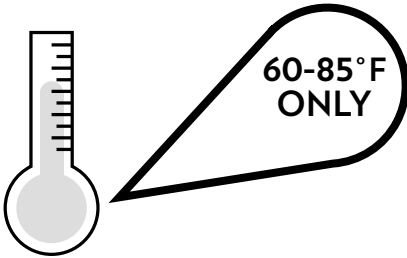
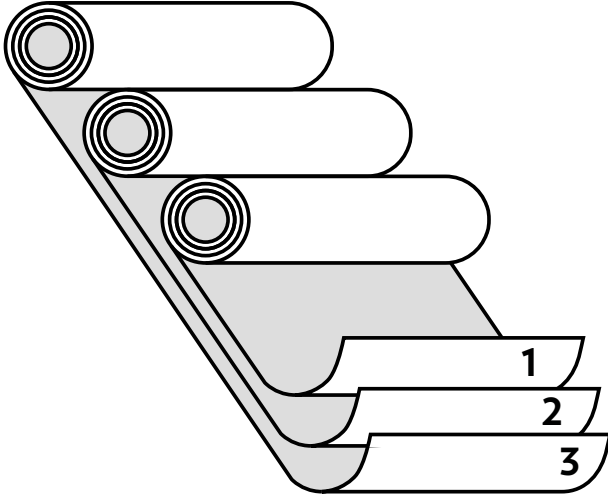
Maya Romanoff Clear Strippable Adhesive MR-RA-888 or comparable & 1/2" nap roller



Roman Pro-977 Ultra Prime Primer or comparable

\*Consult Client Services before you begin installation on surfaces other than drywall.

1



## GENERAL GUIDELINES

When you first unroll vinyl wallcovering, you may notice slight creases caused by the tension in the rolls. This is normal. After applying the material to the wall with adhesive, the creases should fade. For more persistent creases, use a hairdryer or heat gun on the affected area. Keep the heat source a few inches away from the wallpaper and move it around until the vinyl relaxes.

---

Product has been pre-graded from left to right and labeled accordingly on the back. **You must still grade for color flow within your installation.**

---

Inspect goods carefully.

---

Confirm you have the correct quantity and color of product before installing. Additional yardage from this dye lot may not be available.

---

No allowances will be made after three (3) drops are installed. No returns on cut goods.

---

No claims allowed for labor charges or consequential damages, under any conditions.

---

No claims allowed if lighting in area where product is hung is not finished/fully installed.

---

Product is not guaranteed against fading or color change.

---

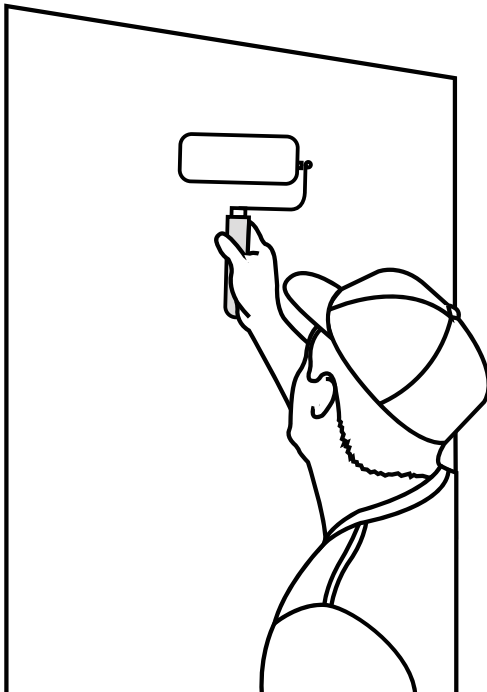
Store uninstalled material between 60°- 85°F in a dry place.

---

Wallcovering **MUST** be installed in a climate controlled environment with an approximate constant temperature of 70°F and a relative humidity level of 50-55%.

---

2



## WALL PREPARATION

Prior to installation on drywall, paint the walls with Roman Pro-977 Ultra Prime Primer or comparable tinted close to the color of your product.

---

Do not use sealing primer/do not install on sealed walls (no eggshell, satin or semi-gloss paints).

---

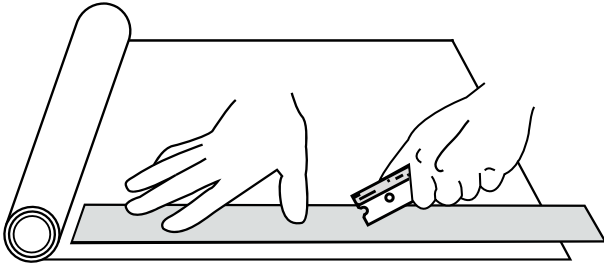
Walls should be smooth and sanded.

---

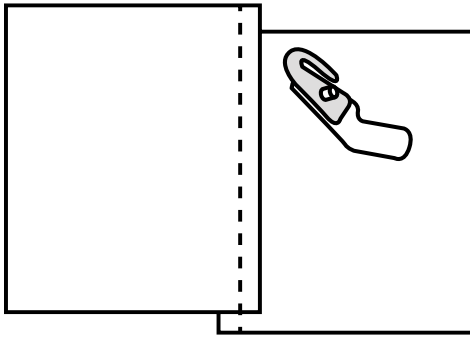
Walls must be completely dry before installation can begin.



3



OR



## TRIMMING

Product is recommended to be double-cut on the wall.

Use a very sharp, single-edge razor blade. Use a new razor blade for each cut.

This material is designed to be overlapped and double-cut, not butted!

Trim to side-match. Approx 1/2" off each side.

4



## PASTING

Use Maya Romanoff Clear Strippable Adhesive MR-RA-888 or comparable. **Do not dilute adhesive.**

Apply a generous, even coat of adhesive to backside of product and let relax.

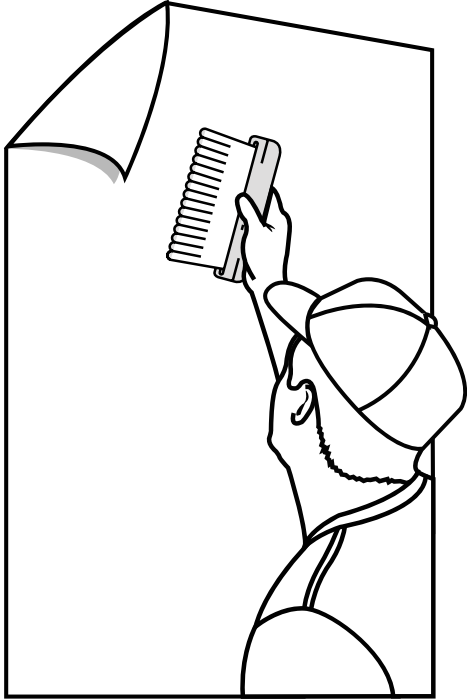
Typical relaxing time is 3-5 minutes until adhesive tacks up. Perform a test on a small strip to determine appropriate relaxing time.

Allow the paste to soak into each sheet for the appropriate time before hanging in order to avoid bubbling, shrinking & seam opening.

Do not fold or crease the wallcovering.

Do not get paste on the face of the product. **If paste gets on the face of the product, do not scrub nor rub.** Instead, immediately gently wipe clean with a soft, damp cloth. Do not use paper towel on the product.

5



## HANGING

Patterns with a definite repeat/motif must be straight hung. Do not reverse the strips.\* Random textures or non-directional patterns may be reverse hung.

Apply product to the wall using a soft-bristled nylon brush. **Do not use a stiff brush.**

Gently smooth product with a plastic smoother to remove bubbles.

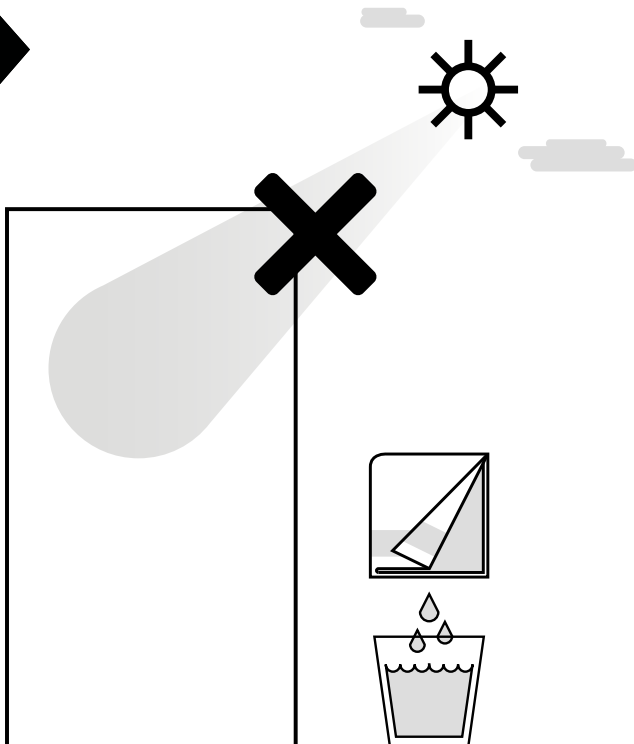
A seam roller may be used to set seams. Please take proper precaution.

Go back and ensure all bubbles are smoothed out before leaving. Any bubbles left upon completion of install will be permanent.

Use a corner seam roller to ease the material into moldings, casework, etc. prior to cutting the product.

Slight color variation may occur.

6



## CARE & CLEANING

Avoid direct or reflected sunlight. Our wallcoverings are not guaranteed against fading or color change.

Maya Romanoff wallcoverings are formulated for dry-use areas.

Before cleaning any wallcoverings, test first on a small, inconspicuous area.

Avoid getting the wallcovering excessively wet.

Never use abrasive cleansers or steel wool as they will mar the surface.

Clean by blotting the soiled area with a soft, clean cloth, dampened with a mild solution of clear liquid detergent. Dry with a soft, clean cloth.

Do not use harsh cleaners, solvents, or chemicals of any kind to clean Maya Romanoff products unless following the guidelines outlined in our Care, Cleaning and Disinfecting document, available at [MayaRomanoffDropbox.com](https://www.mayaromanoff.com/dropbox). When used as directed, disinfectant wipes and diluted bleach/water solutions can be safe and effective sanitization methods for the majority of our wallcoverings.

# Cornerstone™ Type II Vinyl (MR-FV-26 through 43 SERIES)

Patterns with Definite Repeats/Motifs shown at 27" widths

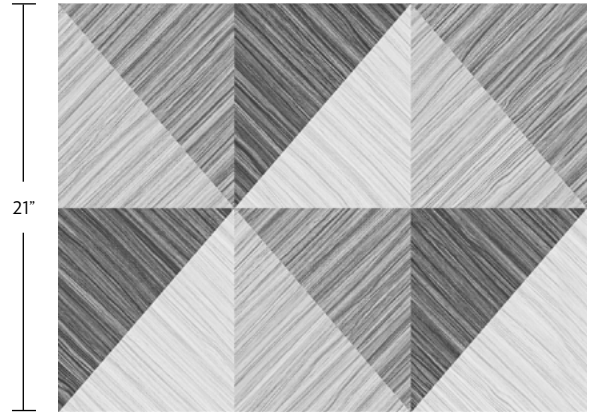
## FV-28 Rooted Hedgerow

Repeat: 21" V (53.3 cm)  
Motif: 13.5" W (34.3 cm)



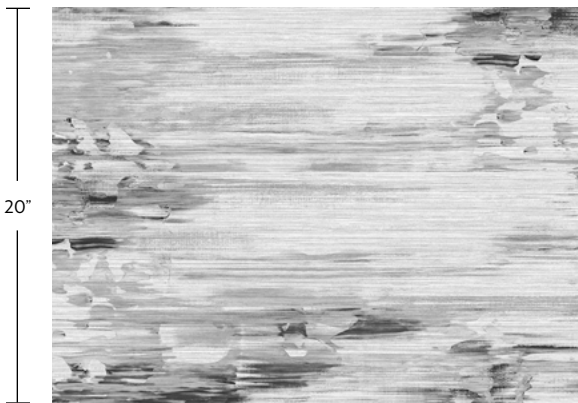
## FV-29 Rooted Canopy

Repeat: 21" V (53.3 cm)  
Motif: 17.9" H x 21" V (45.5 cm x 53.3 cm)



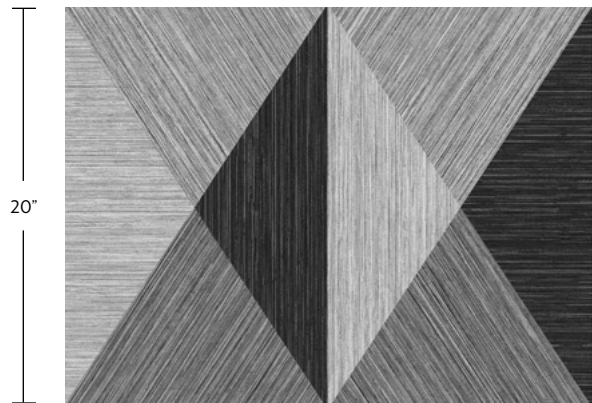
## FV-43 Entwine Spindrift Silk

Repeat: 20" V (50.8 cm)



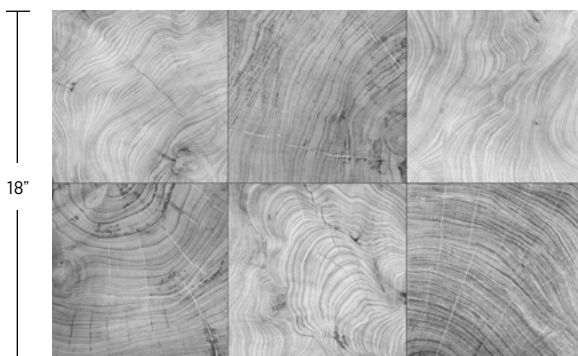
## FV-35 Wisping Weaves Charleston

Repeat: 13.5" H x 20" V (34.3 x 50.8 cm)



## FV-30 Rooted Wedgewood

Repeat: 18" V (45.7 cm)  
Motif: 9" H x 9" V (22.9 cm x 22.9 cm)



## FV-36 Wisping Weaves Saugatuck

Repeat: 18" V (45.7 cm)  
Motif: 18" H x 18" V (45.7 cm x 45.7 cm)



# Cornerstone™ Type II Vinyl (MR-FV-26 through 43 SERIES)

Patterns with Definite Repeats/Motifs shown at 27" widths

## FV-34 Wisping Weaves Provincetown

Repeat: 10.5" V (26.7 cm)

Motif: 9" H x 10.5" V (22.9 cm X 26.7 cm)

