

NEWH

The Hospitality Industry Network

SUMMER 2022



Forward Motion

Signature's evolution elevates the brand for its customers

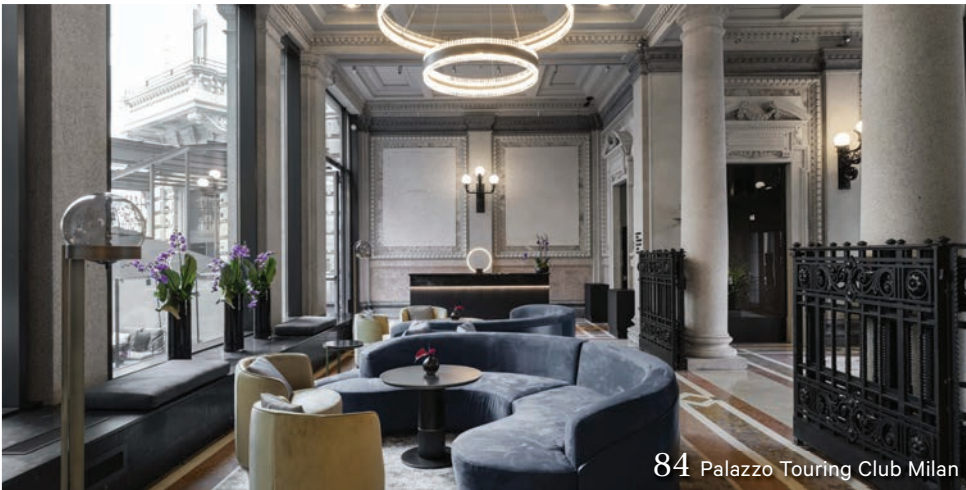
Fallen Lamp and Victoria Desk courtesy of Arteriors Contract.



FABRICUT[®] CONTRACT

fabrics for hospitality, commercial, senior living and healthcare design
800.999.5533 fabricutcontract.com

Contents



84 Palazzo Touring Club Milan



44 Have You Seen

Summer 2022

- | | | |
|---|--|---|
| <p>4 PRESIDENT'S LETTER
A message from NEWH, Inc. president
Chris Tucker</p> <p>8 NEWS
NEWH Pinnacle Award honoree Michelle
Finn</p> <p>10 GUEST PERSPECTIVE
Lynette Montoya, The Latino Hotel
Association and Global Hotel Partners</p> <p>12 EQUITY, INCLUSION, AND DIVERSITY
Brian West, Sunshine chapter EID director</p> <p>16 WHO'S WHO
See what fellow NEWH members are
celebrating</p> <p>28 CONFERENCE ROUNDUP
Recapping the NEWH Leadership
Conference and looking forward to HD Expo</p> <p>34 PREMIUM BUSINESS MEMBERS
Thanking our NEWH supporters</p> <p>44 HAVE YOU SEEN?
Highlighting members' new products</p> | <p>54 SCHOLARSHIPS
Scholarship Recipients awarded during the
2022 NEWH Leadership Conference</p> <p>56 INTERVIEW
Amber Asher, CEO of
Standard International</p> <p>60 SUSTAINABILITY
An Interview with Rachelle Schoessler Lynn</p> <p>64 Q&A: REBECCA BERTRAND
Steering chair, Vancouver region</p> <p>66 Q&A: DEMI MELISSINOU
Toronto chapter president</p> <p>68 Q&A: ADAM TOOTER
NEWH, Inc. Ambassador</p> <p>70 ON THE COVER
Signature Flooring</p> <p>72 PROJECT: LOVANGO RESORT +
BEACH CLUB
Michael Thomas & Co.</p> <p>76 PROJECT: THE DÖRR HOTEL
Aria Group</p> | <p>80 PROJECT: GROUNDWORK KITCHEN
Studio Partnership</p> <p>84 PROJECT: PALAZZO TOURING CLUB MILAN
Studio Marco Piva</p> <p>88 CHAPTER HIGHLIGHTS
Chapters share what's new and noteworthy</p> <p>98 SAVE THE DATE
NEWH and industry events</p> <p>100 NEW MEMBERS
The newest additions to the NEWH family</p> <p>104 PARTNER PROFILES
Learn about some of NEWH's corporate
partners</p> <p>106 SPONSOR INDEX
Sponsors in this issue</p> |
|---|--|---|

70 On the cover from Signature: Beth James, Jim Carew, Angie Law, John McIntosh, Bobby Berrier, Lisa Litzinger, and James Coker. Photo by Andy Baxter Photography



President Chris Tucker
chris.tucker@tuckerassociates.ca

CEO Shelia Lohmiller
newh.magazine@newh.org | 715-526-5267

Editorial
editor@newh.org

Designer Polly McQuillen
magazine.graphics@newh.org



Sponsorships
magazine.sales@newh.org | 715-526-5267

Production Manager Grace Casey
grace.casey@emerald.com

To update your subscription preferences please go to newh.org/newh-magazine-subscription-form
To opt out of receiving NEWH magazine, please email newh.magazine@newh.org

A MESSAGE FROM THE NEWH, INC. PRESIDENT

Hello Summertime!

We welcome in this time of year always, but this year even more exciting is a summer of warmth and hugs together in the same room.

We are still reveling in the success of our NEWH Leadership Conference in Seattle this year as we reached full conference capacity. Each of these events has surpassed the previous and that is thanks to the dedicated Leadership Conference committee for bringing us the industry's leading content. The execution by our own NEWH, Inc. staff as well as the volunteers on the LC Committee we salute for their countless hours and patience in pulling off these conferences while continuing their day job. Thank



Chris Tucker

you to the 600-plus who attended this year—we appreciate each of you! The Seattle chapter stepped up to share the city, planning six different options for excursions on Saturday that were sold out, so a seventh tour was added to facilitate the overwhelming demand! All of the tours were thoroughly enjoyable to explore all Seattle has to offer with fellow NEWH members from 29 chapters and regional groups around the world. Read about more event highlights on page 30.

This year at the Leadership Conference we inducted 12 new members into the NEWH College of Fellows as we recognized their commitment and dedication to NEWH over the years. Each of these members has shown unquestionable ethical conduct and professionalism in their own careers and efforts on behalf of NEWH. Our Fellows have shared their leadership skills as well as mentored individuals to help in the continued success of NEWH. See the full list in the Conference Roundup on page 28.

The honor of the 2022 Pinnacle Award is bestowed to Michelle Finn who has been an NEWH member for 31 years and who has contributed extraordinary time and effort to NEWH. In that time, Michelle has been a true partner with NEWH from the early years of our inception to empower women in the industry. Michelle's reputation and connections in the industry are a standalone legacy.

The 2024 NEWH Leadership Conference will be held in Memphis, Tennessee, hosted by our Mid-South Regional Group. Do hope you will put it on your calendar and in your chapter budgets to plan for your chapter and regional group to be represented! The Leadership Conference is not just for board members but is enriching and educational for anyone who is part of the hospitality community. Even Elvis is considering attending!

This year the NEWH Regional Tradeshows are back to full speed ahead with our NEWH, Inc. team working their magic to bring these soldout tradeshows to a hungry hospitality industry. Upcoming shows are Denver on June 2nd, Atlanta on Sept 29th, Orlando on October 18th, and South Florida on October 20th. We hope to see you there!

As the hospitality industry rebounds, I remind you to take a moment to appreciate staying connected through NEWH these past years. When life handed us some lemons, we made juice and remained positive as we continued to move forward together adapting to online engagement to stay connected to our industry. A very special salute to our Corporate Partners who remain committed to the value that NEWH brings in our industry and that is thanks to our members. We share great gratitude to each of you who support NEWH and give of your personal time for events—supporting the future of our industry through scholarships and networking and all giving back to the industry we thrive in. We look forward to seeing you in person at your chapter or regional group events as we all move forward together. We might even squeeze in a Zoom event along the way for old time's sake!

Sincerely,

A handwritten signature in cursive script that reads "Chris Tucker." The ink is dark and the signature is fluid and personal.

Chris Tucker
NEWH, Inc. International President





FABRICUT[®] CONTRACT

fabrics for hospitality, commercial, senior living and healthcare design



800.999.5533 | fabricutcontract.com | fr-one.com

BANQUET SERIES



715 SPECTRUM STACK



717 MAYFAIR STACK



716 MORITZ STACK



730 MESA STACK



719 CAPRICE STACK



708 ULTIMA STACK



727 JULIET STACK



713 LUMA STACK



712 BOLERO STACK



Pinnacle Award

Each year the Pinnacle Award (formerly known as the Award of Excellence) is given to an outstanding NEWH member who has contributed extraordinary time and effort to NEWH. This individual must have a minimum of 10 years' experience in the hospitality industry, have held a local chapter or International Board position for at least one term, and have mentored four people in the industry, at least two of whom are women. The nominee must also have unquestioned professional ethics.

Our winner has been a member of NEWH since 1991 and has been involved in many of our most successful initiatives.

And the winner is...Michelle Finn!



OUT ODG
DESIGN
GROUP



Diversifying the Hospitality Industry Through Determination, Curiosity, and Conversations



LYNETTE MONTOYA
THE LATINO HOTEL ASSOCIATION AND
GLOBAL HOTEL PARTNERS

The hospitality industry can get the greater diversity it needs, but women, Latinos, and other nontraditional potential hotel owners must be determined—to take chances and ask questions, says Lynette Montoya, president of the Latino Hotel Association.

President of the association since 2015 and owner of her own hotel broker business, Global Hotel Partners, since 1998, Montoya moved into the hotel industry by seizing an opportunity to learn about the hotel business from one of her real estate clients and being willing to take risks. “I asked if they would be willing to teach me. They told me everything they thought I needed to know. And then I started knocking on doors. The first hotel I sold was from a cold call and it was life-altering,” she says.

Women interested in the hospitality industry must be determined, Montoya says, and just as willing to listen. “Women have to be tough and have to be willing to work harder than anyone else,” she says, citing the story of a young woman who works for her who dove into hotel development by taking advantage of an invitation to help with development even though she knew very little about the field. “She was determined to learn, she worked hard, and when the banks were ready, they only wanted to talk to her.”

Montoya, founder of the Santa Fe, New Mexico Hispanic Chamber of Commerce and a board member of the environmental think-tank Architecture 2030 and community social services charities, says she has never let her “comfort zone” constrain her from

taking a risk, and she urges potential Latino hotel owners to also take chances. The Latino Hotel Association is here to help them, she says, with knowledge, information, education, and connections that can help them succeed.

But it’s not just up to women and Latinos to push themselves forward in the industry, the industry itself must identify the barriers to diversity, Montoya says. “We need to start asking the right questions. How can we make the situation better? What are your ideas for improving diversity? We need to set aside time specifically for these conversations. Then we must listen. Over my career, what I have come to value most is the willingness of people to give me their time and their perspectives.”

Bringing a variety of perspectives—to an industry still dominated by white men—will improve the industry, she says. And bringing nontraditional hotel owners into the industry will help build generational wealth.

“The hospitality industry is a great industry, and it provides opportunities to build assets that owners can pass down to their children and grandchildren and on which their children and grandchildren can build,” she says.

Lynette Montoya is CEO of the Latino Hotel Association and president of Global Hotel Partners. She is on the founding board of directors of TourismDiversityMatters.org, and serves on the advisory council of the California State University Hospitality and Tourism Management Education Alliance. ■■



DURKAN

MOHAWK GROUP HOSPITALITY

Painted Perspectives

A collection that uses the inclusive power of art to express its ability to create communities. Painted Perspectives uses self-expression as an inspiring basis for community and a way to bring us all together to create an impact.

Check out Painted Perspectives at HD Expo, booth 4308.

WWW.MOHAWKGROUP.COM/HOSPITALITY

The NEWH Leadership Conference: Industry of Inclusion, Innovation, and Creativity



BRIAN WEST

NEWH Sunshine chapter director of Equity, Inclusion, and Diversity, and administration manager, the Carroll/Adams Group

WOW! Now that is what I call a Leadership Conference! Amazing speakers, informative panel discussions, and exciting opportunities to reconnect with friends along with the chance to make new ones. I was thrilled to see many of my NEWH community and to meet many of the members from the Equity, Inclusion, and Diversity (EID) Committee, most of whom I had only met via Zoom.

One of those truly informative panel discussions was Industry of Inclusion, Innovation and Creativity, moderated by Vaki Mawema, principal and managing director at Gensler Baltimore. He was joined on the panel by Tad Asbury, the executive director and vice president of Bridges from School to Work and Marriott International, which helps youth with disabilities find jobs and assists them in building lifelong career skills for those positions. Our second panelist was Tracy Prigmore, the managing partner of TLTsolutions and She Has a Deal, whose driving purpose is to empower women and minorities to build generational wealth by creating passive income through investments in real estate. Our third panelist was Lynette Montoya, president and CEO of the Latino Hotel Association, who, like the other panelists, is actively working within her

community to bring awareness of the opportunities in the hospitality industry and in hotel ownership. The discussions encouraged reflection and included a wealth of usable information to put into practice.

BRIDGES FROM SCHOOL TO WORK

Bridges is a recognized leader of youth opportunity programs, through its hands-on approach to helping young adults with disabilities find meaningful jobs while in school and after graduation from high school. Tad started the conversation by asking the thought-provoking question of “Are we challenging ourselves?” In response to the follow-up question of “What drives you to do what you do?” he shared that he and his team at Bridges view it from the perspective of “any labor that helps people is something important.” In exploring this further, he suggested that we see it from the vantage point of what we can do for just that one person—the one simple thing which could be the life-changing event that one person needs.

Students from the Bridges school were asked to share a single word to describe what having a job means to them. Some of these words, such as Understanding, Courage, Belief, Trust,

Continued on p. 14)))



RESIDENTIAL STYLE.
COMMERCIAL CAPABILITIES.

Room&Board
BUSINESS INTERIORS

roomandboard.com/bicontract
800.952.9155

Independence, Confidence, and Drive were shared through a series of photographs with the panel. These are also used as a tool in recruiting prospective employers.

TLTSOLUTIONS

TLTsolutions works to provide access to alternative investments and assist communities of color to acquire residential and commercial real estate. She Has a Deal provides a platform that offers similar assistance to create opportunities for commercial real estate ownership and development for women. These goals are achieved through education, networking and investment opportunities. Tracy began the discussion with some of her own challenges she had to overcome in the realization of her dreams.

Her inspiration for that dream was the book “Rich Dad, Poor Dad” by Robert Kiyosaki. With that motivation, and the desire to enter the real estate market, she used the bonus from her full-time job to purchase her first condo. In addition, she studied commercial real estate in her free time. However, when she tried to purchase her first hotel, she was denied. But that did not stop her from working. She “put herself out there” by working to inspire women who believed in her vision. She hired a mentor to assist her in establishing the framework for her company and shared her passion with other like-minded women. They joined her and became shareholders to help her in purchasing her first hotel. Since then, she has worked to grow her business to help prevent the same hurdles for others and guide women like herself to build generational wealth through hotel ownership. This drew the attention of both Marriott and Hilton, which reached out to “join forces” with her company, She Has a Deal.

THE LATINO HOTEL ASSOCIATION

The Latino Hotel Association has been working to offer Latinos in the U.S. the resources needed to begin their journey into hotel investments and ownership. They work to provide the knowledge, funding, and support to take advantage of those opportunities.

Lynette is originally from New Mexico and English is her second language. She had moved to Dallas but chose to leave an abusive relationship and returned to Santa Fe, the single parent of two. Her father was a source of encouragement to her and suggested that she get her license in real estate focusing on residential properties.

While collaborating with clients in the search for their perfect home, she discovered that they were developing a hotel management company. When her clients decided not to purchase a home, she took the initiative and offered to sell them a hotel. They agreed and she brokered her first deal, for the St. Anthony Hotel for \$65 million. She educated herself in the industry by attending investment conferences, which were mostly attended by men at that time. In addition, she joined the Latino Hotel Association and has since risen to the office of president. One of her goals is to promote hotel ownership among the Latino community and believes that there is quite a bit of growth potential there.

PANEL TAKEAWAYS

Indeed, there are hurdles to overcome when it comes to EID in the industry. We should collaborate with employers to encourage them to take a chance on someone they would not normally consider. Embrace the younger generation of talent and remember: Don't give the younger generation pity, give them a paycheck. Work with minorities to get their real estate licenses and help them grow generational wealth. Provide access to economic opportunity, such as capital to invest, in order to grow the economy and uplift their communities.

The question was asked of the panelists, “What does it take to dream something and see it through?” Have the Guts. Take the step and do it. Be committed to it. Journal your goals. Take business coaching lessons. Read your goals. Focus on the younger generation to help to prepare them. And finally, be PASSIONATE about it!

Visit [NEWH Inc.'s EID page](#), where you can find a list of articles—accessible at [newh.org/read](#). ■■





NEVER DESIGN ALONE.



Inspired by the need to protect our oceans, this upholstery collection is crafted with plastics that are reclaimed from coastal and marine waterways. Upcycled Marine Plastic Upholstery contains a rainbow of colors and neutrals that reflect the vibrancy of ocean life. These sophisticated textured fabrics exceed ACT performance standards & are made in the USA. ♻️

Drapery fabric **Live Ocean** designed by **Lezio Lopes** for Valley Forge.

Hospitality | Textiles | Bedding | Window Treatments

Valley Forge. We're here for you.



www.valleyforge.com

1. Fabricut Contract welcomes **Mike Bowden** of the Grant Group as the new territory sales agent for Alabama, the Florida Panhandle, and Georgia, representing Fabricut Contract, FR-One, S. Harris, and Muraspec Wallcoverings brands.



1

2. P/Kaufmann Contract welcomes **Julie Zweifel** to the sales team covering the state of Nevada.



2

3. Courtney Swaim has joined **ENCORE** as a sales representative in the Southeast.



3

4. Dr. Sharron Koch, hospitality chair for the NEWH South Carolina region, has launched the second season of her weekly podcast, ProcureSmart(er): Humans of Hospitality. The season starts with an interview with furniture entrepreneur Mitchell Gold.



4

5. Cambria has hired **Jennifer Schorer** as director of sales – hospitality and **Kevin Bourassa** as director of sales – hospitality west.



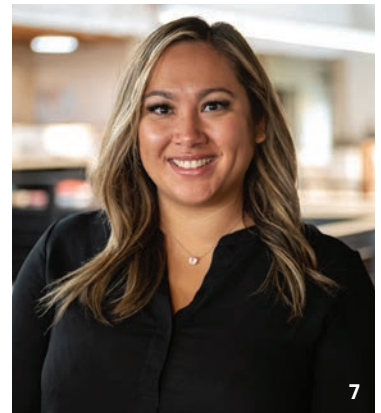
5

6. Niemann Interiors announces that **Lauren Miller** will be its summer intern. Miller was one of the Sunshine chapter's scholarship winners in 2021 and is currently enrolled at the University of Florida, majoring in interior design with a minor in sustainability and the built environment.



6

7. Rice Fergus Miller welcomes two hospitality designers back to the team: **Stéphanie Issacs** has rejoined RFM as a senior interior designer and **Jourdan Umali**, a member of the NEWH Northwest chapter's scholarship committee, rejoins with nearly a decade of experience working on hospitality, senior living, and housing projects.



7

8. Mosaico+ has changed its name to **M+ (emmepiù)**. M+ opens to new formats and materials, with the aim of realizing materials for interior and architecture.



8

9. Timi K. Mustapha of the Washington DC Metro chapter is now executive sales, key accounts for **Designer Tile and Stone USA**. She continues on as adjunct lecturer of interior design at Montgomery College in Rockville, Maryland and also holds yoga classes for interior designers through her company Yoga x Design Peace.



9

 **ENNIS**
FABRICS
WWW.ENNISFABRICS.COM

PROTECTED BY:



CHALLENGER

BY ENNIS FABRICS

A HIGH PERFORMANCE VINYL WITH A LUXURIOUS FEEL

ECO-FRIENDLY | ULTRA SOFT HAND | HIGH ABRASION
ANTIMICROBIAL | EASY CLEANABILITY
RESISTANT TO HARSH CLEANERS
PROP 65 COMPLIANT | PHTHALATE-FREE



YOUR LIGHTING DESIGN
BROUGHT TO LIFE



Scan to Request your Custom Lighting Quote
www.ptylighting.com

Follow Us



10. DAC Art Consulting announces Chicago-based **Coyne Associates** as its newest independent sales representative for its healthcare division, representing DAC Healthcare in North Illinois and Wisconsin. DAC had a blast being a part of the NEWH Product Showcase in Seattle, showcasing artists local to Seattle and down the West Coast. The company also congratulates **Julia Marks** (pictured on left), who has been inducted into the NEWH College of Fellows.



11. Fabric Innovations recently welcomed **Arlene Abreu Mahon, CPA**, as its chief financial officer.



12. Douglass Industries announces **Rebecca Rotar** as its new sales representative in the Colorado, Utah, and Montana territory for hospitality and healthcare markets, along with **Jesse Casher** as the company's national sales manager

13. An '80s reunion of Marriott A&C talent gathered to reminisce. Traveling the farthest to attend was **Sheri Smith**, who returned to the U.S. from her Marriott post in Dubai. The closest guest was **Linda Milburn**, who moved after many years in Montgomery to Loudoun County, Virginia. This was the second time **Lynda Welte** (former purchasing agent for Marriott) hosted the hospitality alumni. **Antonio Del Moral** will join the group in April.

Frenchman's Creek Beach & Country Club members recently approved a new \$74 million, 124,450-square-foot clubhouse designed by **Peacock + Lewis**. The multi-level clubhouse is projected to be completed in late 2024. (No photo)



Tomorrow's classic.



In-line product from Stickley Contract brings your project the effortless style and unmatched craftsmanship of an iconic American brand.

MARTINE

King Bed W84 D86½ H64, Glass-Top Nightstand, and Gumdrop Stool
Tariff-free from our factories in New York, North Carolina, and Vietnam
stickleycontract.com

STICKLEY®
CONTRACT

14. Hibner Design Group is celebrating 10 years as a design firm this July. The firm has unveiled its renovation of Venice on Rose, a project that includes five full-scale murals and site-specific artwork in collaboration with Wrapped LA. HDG also welcomes **Kimberly Clappitt** as a senior designer at the firm.



15. Gini Hetherington recently joined **DeYoung & Associates** as a sales representative to the A&D community in DYA's Mid-Atlantic territory.

16. Sonya Haffey, principal of **V Starr**, has been honored as the Distinguished Alumni Award recipient for 2022 from Florida State University.



17. Ecore has transformed its website, ecoreintl.com, to deliver an optimized user experience. Featuring additional resources and an easy-to-navigate design, the redesigned site enables visitors to easily browse Ecore's flooring surfaces by product, market, or application.



18. Jelena Nikolic has been promoted to head of design at **Sargenti Architects**.

19. Installation Service Group (ISG) installed a floating chandelier at the Aventura Health hospital lobby in Tampa, Florida. This work of art was shipped from Canada from the **Jeff Goodman Studio** in Toronto and experienced installers mounted the one-of-a-kind handblown glass wall into position. The company also announces the following promotions: **Craig Zetena** to general manager, **Sean Woolley** to project manager, and **Mily Zraggen Cruz** to project management coordinator.



20. Indiewalls recently hired **Kara McIver** for the Texas territory manager position.

21. Rosemary DiModica has retired from **Momentum Textiles & Wallcovering** after working in the hospitality industry for 30 years. DiModica has served on NEWH boards in Orlando, Los Angeles, and Miami and is an NEWH Joyce Johnson Award honoree. She will remain in South Florida with her husband, Seth Rieback.





jardinico®
CARACTÈRE

Shown: JCP301-35 (CC) in 5476 Heather Beige
www.jardinicousa.com



Come visit us at Booth 4743, HD Expo - April 26-28, 2022 - Mandalay Bay, Las Vegas NV!



shademaker
architectural shade



Shown: POLARIS-35S in 5429 Canvas Macaw
www.shademakerusa.com

22. Hubbardton Forge announces recent staff hires and promotions: **Eric Hannon** joins the senior leadership team in a new role as vice president of information technology; **Margaret Dugan** has been promoted from HR director to vice president of human resources; **Nate Carr** assumes a role as chief of staff; **Hal Brown**, one of the longest-serving employees at Hubbardton, has been promoted to engineering manager; **Maggie Brown**, has been promoted to senior project manager; and **Max Pfiffner** joins as visual merchandiser, based in Dallas, where the company maintains a 6,500-square-foot showroom at the Dallas Market Center.

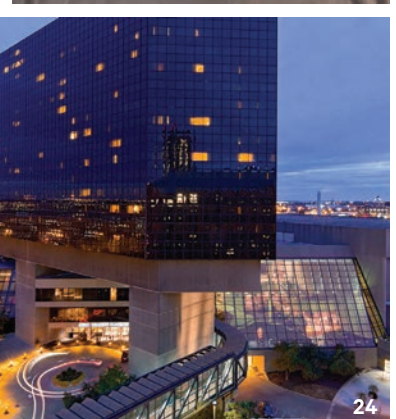


23. Floor 13 Textiles, helmed by owner **Kathleen Bennett**, has earned certification as a Women Business Enterprise (WBE) from the Women's Business Enterprise National Council (WBENC).



24. GWS recently completed work on the 633-room Hyatt Regency Columbus renovation project. The company managed the liquidation, project management, warehousing, installation, and delivery processes throughout the renovation.

25. Jon Dickinson and **Ginny** and **Warren Dorn** of **Dickinson Contract** showed their favorite furniture and fabric at the NEWH Cincinnati trunk show.



26. //3877 welcomes interior designer **Jeffrey White** to the interiors team.

27. Häfele America Co. has named **Christy Adams** to the role of business development manager in all market areas throughout Nevada and California. She was also recently named director of fundraising for the NEWH/Las Vegas board.





HIS VISION *CONTINUES*

The FRANK LLOYD WRIGHT[™]
BATH COLLECTION

BRIZO[®]

IN PARTNERSHIP WITH THE FRANK LLOYD WRIGHT FOUNDATION | BRIZO.COM
© 2022, Frank Lloyd Wright Foundation. All rights reserved.



GLOBALSAFE
22 YEARS

800-545-4947
WWW.HOTELSAFES.COM

Hotel Safes
FROM
\$99

1 YEAR
WARRANTY

Our Safes are in Every Major Hotel Brand in the U.S.A.

Custom Colors Available



28. HVS Design is pleased to welcome the following designers to its staff: **Kristi Newton** (design director), **Roxana Carjan** (senior designer), and **Lena Halboni** (designer).



29. Alexandra Russell has joined the **Jamie Stern** sales team in the New York Metro area.

30. Kim Swanson of **KD Swanson Hospitality Resource** announces their representation of **Silhouette Outdoor Furniture** in the DC Metro area.

31. Melissa Janssen and **Josh Kennett** represented **Royal Thai** at the NEWH Seattle Product Showcase and Leadership Conference.

32. Royal Custom Designs welcomes two new members to its sales team: **Tiffany Sams** covering the Northern California territory and **Jane Smith** covering New Mexico, Arizona, and Utah.

33. Yellowbox Collective, LLC, led by principal **Melanie Tantillo**, has just opened in New Jersey's Delaware Valley, covering Pennsylvania, New Jersey, Delaware, and Maryland. The independent manufacturer's rep group currently represents Kartell, Moroso, Golran, and Gordon with more to come.

34. Milliken & Company has been recognized by Ethisphere, a global leader in defining and advancing the standards of ethical business practices, as one of the 2022 World's Most Ethical Companies. With more than 60 locations and approximately 8,000 associates worldwide, the company is one of six to receive this ethics-based honor every year since the award's inception.

35. The Material Collective's Karine Daumard now represents United Fabrics in Arizona and New Mexico.

36. Rebecca Luong has returned from Seattle to her hometown of Vicksburg, Michigan to serve as director of design for the \$80 million Mill at Vicksburg project.



JUST OPENED!
New Rep Group in the Delaware Valley
Our Lines include: Kartell, Moroso, Golran & Gordon

2023 MEMBER NEWH
The National Ethnic Wholesale Manufacturers Association

www.yellowboxcollective.com
[@yellowbox_collective](https://twitter.com/yellowbox_collective)



PATRIA

an homage to hometowns everywhere



Brintons

Brintons latest self-expression collection, Patria, focuses on the foundation of what makes us who we are. Everyone has a hometown; it could be where you were born, the place you spent your formidable years or where you chose to settle down and build a family. The landscape, the history, the architecture, the night-life, the neighborhood; Patria is our homage to hometowns everywhere.

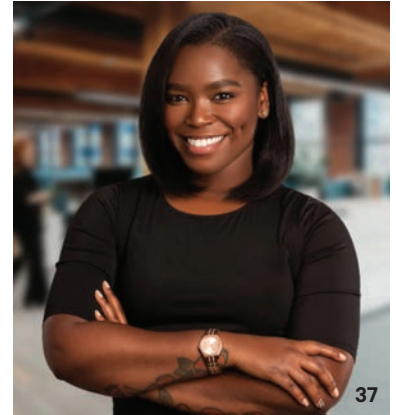
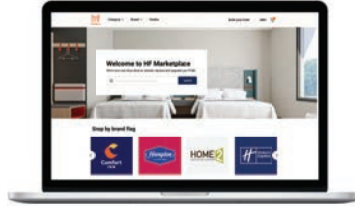
A collection of broadloom Axminster carpet patterns to inspire you.

View the designs on our corporate website or visit dso.brintons.net to start customizing.

www.brintons.net



37. HotelFurniture.com has launched an online marketplace specifically curated for hotel hospitality professionals to procure FF&E items. **Danna Dunnage** and **Monique Farley**, two NEWH members from different chapters, were part of the launch team and continue to be an integral part of the HF team.



38. Architex announces three new sales representatives: **Nick Wilson** in Colorado and Wyoming; **Ryan Reid** in Arizona, New Mexico, and Southern Nevada; and **Jessica Roberts** of Hampton Products in Michigan.

39. Penny & Lucy Lou Art recently completed art as wayfinding at the Evergreen House, a first-of-its-kind Montessori for Aging and Dementia memory care support neighborhood. The art colors and subjects speak specifically to residents memories in the local area.



40. Nima Patel has taken on the role of director of sales for **Gary Platt's** new hospitality division, **Sierra Nevada Hospitality**.

41. The Shay by Hyatt Hotels recently came to Culver City's Ivy Station. Designed by **KFA Architecture** and **Studio Collective** and developed by **LOWE** and **AECOM** – Canyon Partners, the property features **Claybrook's** bespoke integrated MarbleForm vanities with matching slabs in all the bathrooms. Its Soho and Skye baths were also installed in the suites (shown).



42. nAscent Art worked closely with **Parts and Labor Design** on the artwork for the newly opened Thompson Denver Hotel. The pieces focus on local artists who evoked the rough, refined, material-driven and sophisticated nature of the brand, including a stunning wall sculpture by Denver artist Derrick Velasquez that greets guests in the corten steel entry vestibule.





COOL & Comfortable

Sophisticated design. Distinctive components.
Engineered for lasting durability and comfort.

SERTAHOSPITALITY.COM

Copyright © 2022 SSB Hospitality, LLC. All rights reserved.



ashley
lighting inc
Bringing Ideas to Light

ashleylighting.com



ARBOREAL

MODULAR
LANDSCAPES

Miliken



SCAN FOR MORE

Kingpin in Trident 01229304

Getting Inspired at the 2022 NEWH Leadership Conference

More than 600 local and international hospitality industry members gathered at the Westin Seattle in February for the 2022 NEWH Leadership Conference, coming together for education, innovative solutions, and top-notch networking with peers and hospitality influencers.

The event kicked off with the NEWH Product Showcase, boasting a show floor packed with the latest products and services from 165 vendors, while days two and three featured conference sessions focusing on information and strategies to break boundaries and move the hospitality business into the future.

Impactful sessions featured leading hospitality professionals and icons. The first day kicked off with the Mix & Mingle event for students and welcome reception for all attendees. The morning of the second day saw the opening keynote, sponsored by CF Kent, from Chase Jarvis, a renowned photographer and CEO of CreativeLive—where more than 10 million students learn photography, video, design, music and business from the world’s top creators and entrepreneurs—who spoke to attendees about dreaming big. Day three’s keynote, sponsored by Woodcraft Hospitality, was presented by industry luminaries Aliya Khan, Marriott, and Bashar Wali, ThisAssembly, who brought out their crystal balls to imagine what the future of hospitality will look like.



“
What a fantastic event. From the panel discussions to the motivational speakers, there was something for everyone. It was wonderful to witness the resilience of our hospitality industry.”
— JONATHAN KALER
Williams Sonoma

1. Keynote speaker Chase Jarvis, CEO of CreativeLive
2. Keynote speakers Aliya Khan, Vice President, Lifestyle Brands, Marriott International, and Bashar Wali, founder of ThisAssembly and CEO of Practice Hospitality
3. NEWH Leadership Conference Scholarship recipient Caio Viviani and NEWH scholarship director Jennifer Wellman

Continued on p. 30)))



MOEN

MODERN DESIGN
WITH A BROAD DÉCOR
STYLE REACH.

With its name inspired by an elegantly lengthened C-shaped spout form, Cia™ stands out from the linear, horizontal designs featured in most modern faucets. The spout's contemporary curves and the handle's defined edges combine with elegant details for a look that feels classic yet fresh. Depending on the finish, this collection beautifully reaches across décor styles.

Explore: moen.com/professional

© 2021 Moen Incorporated | MAIN21-0607



NEVER DESIGN ALONE.

Inspired by the need to protect our oceans, this upholstery collection is crafted with plastics that are reclaimed from coastal and marine waterways. Upcycled Marine Plastic Upholstery contains a rainbow of textured that exceed ACT performance standards & are made in the USA. ♻️

Drapery fabric *Live Ocean* designed by *Lezio Lopes* for Valley Forge.

Hospitality | Textiles | Bedding | Window Treatments

Valley Forge. We're here for you.



www.valleyforge.com

CONFERENCE ROUNDUP

The conference's two days were also filled with informational and enlightening breakouts—from signature BrandED sessions to a panel celebrating NEWH TopID recipient firms, and sessions from leading-edge technology offerings and the latest in F&B—attendees were able to choose the educational topics most relevant to them. Also returning this year was the NEWH/Hospitality Design Owners' Roundtable featuring the opportunity to connect one-on-one with influential hospitality leaders in a signature rotating roundtable format.

During the very special Scholars and Awards Luncheon, sponsored by Mandy Li Collection, Quiltcraft, and Tarkett Hospitality, the NEWH Leadership Scholarships were presented to Caio Viviani and Delaney O'Brien, along with the BrandED scholarship in the name of Hyatt to Lauren Hart (read more about these talented recipients on page 54). NEWH also presented the Pinnacle Award to Michelle Finn and inducted 12 industry veterans to the NEWH College of Fellows:

Barbara Azzinaro	Claire Koch	Judy Regan
Michelle Finn	David Mahood	Stacy Shoemaker Rauen
Patty Frederick	Janice Marko	Mary Ann Thornam
Nikki Jones	Julia Marks	Jonathan Young

Read more about the Fellows and their careers accomplishments at newh.org.

“
 This was our first NEWH Leadership Conference and participating in the Product Showcase was the best decision we made in addition to attending. Each of the events, sessions, and networking time supported the efforts we made during the Product Showcase where we were able to have conversations on a professional and personal level. It was great fun to share laughs, smiles, and the sheer joy of being in each other's company again.”
 —DEIDRE SCHWARTZ
 Woodcraft Hospitality

“
 The NEWH 2022 Leadership Conference was truly inspirational, thoughtful, and filled with compelling current and useful industry information. Looking forward to the next one!”
 —ELIZABETH GRIMSLEY
 VDC – Van Dresser Company

The event was complete with numerous opportunities for socializing and fun, including tours of Pike Place Market, the Holland America headquarters, a brewery, local glassblowing studio, and more. Networking was also in full effect at several receptions over the three days, plus the sold-out NEWH/Northwest Conference Closing Party. With attendees showing up in their best black and white fashion, proceeds from the event benefitted the NEWH/Northwest scholarship fund. A special thank you to Grand Image and co-sponsors Bernhardt Hospitality, Electric Mirror, Fabricut Contract, and Shaw Carpet.

And a huge thank you to ALL the event sponsors who made the 2022 NEWH Leadership Conference such a huge success!



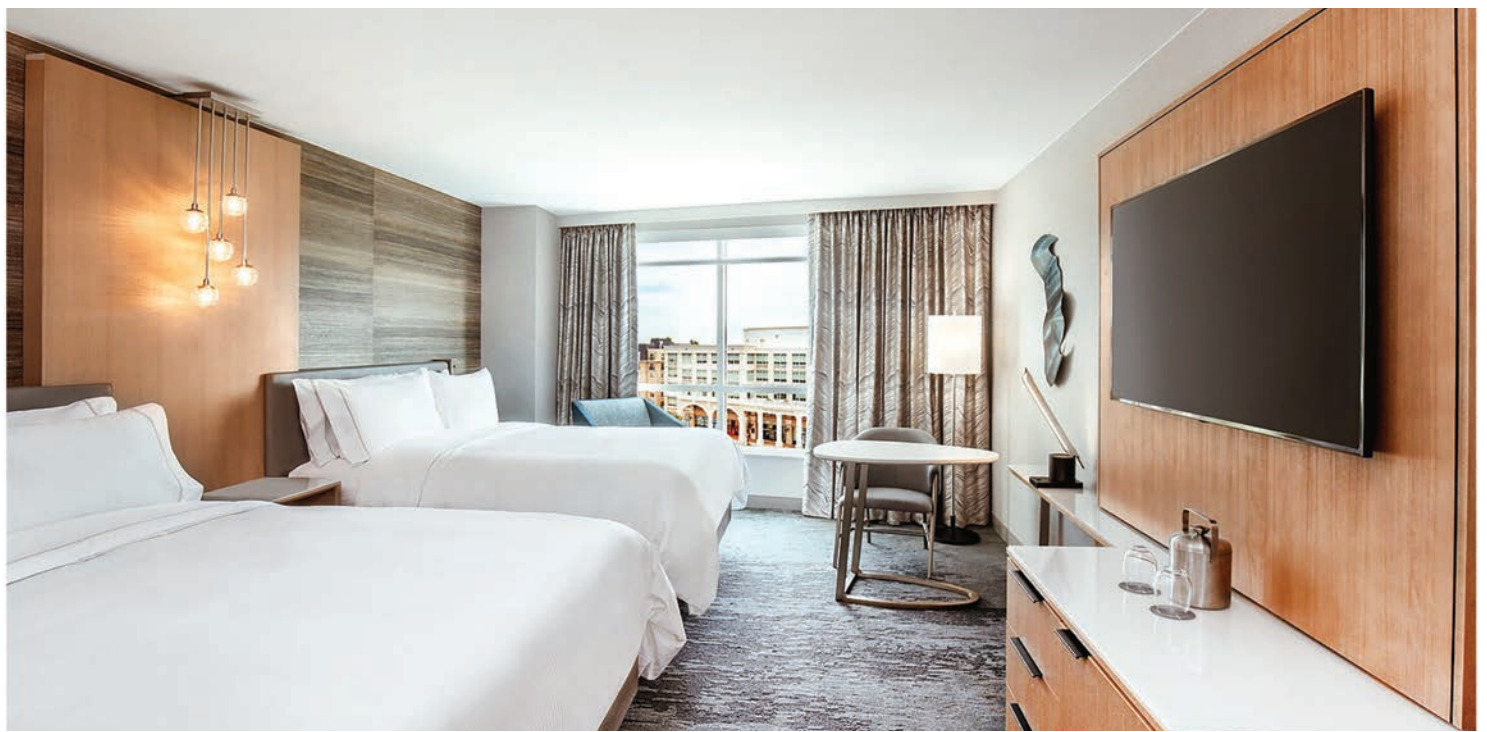
4. NEWH Leadership Conference Scholarship recipient Delaney O'Brien



5. NEWH BrandED Scholarship in the name of Hyatt recipient Lauren Hart, and Alvaro Montoya, Hyatt Hotels

Continued on p. 32)))

A Whole New Approach to Furniture Manufacturing



Furniture Atelier offers tailored solutions, state-of-the-art manufacturing facilities with outstanding quality, a knowledgeable team of experts and seamless communication from shop drawings to final installation.

[> Get to know our outdoor line](#)

1-833-ATELIER | INFO@FURNITURE-ATELIER.COM | WWW.FURNITURE-ATELIER.COM

 Furniture
atelier®

Previewing the Dynamic Sessions at HD Expo + Conference 2022

HD Expo + Conference returns to Mandalay Bay in Las Vegas April 26th-28th. Back to its three-day format, the event will feature talks with must-know info and a tradeshow floor filled with new products to experience in person. With an emphasis on the booming lifestyle segment, new definitions of luxury, designing with soul, and diversity and inclusion, the conference is chockfull of the info you need to know to keep your business thriving and stay inspired. NEWH will also host its signature BrandED and Green Voice sessions (read more on page 60), as well as the NEWH Young Entrepreneurs Breakfast, which includes the NEWH Harvey Nudelman scholarship presentation by Fabricut and FR-One, as well as the second-annual HDAC Diversity in Scholarship Award.



Here are a few not-to-miss sessions while in Vegas:



HDAC Series: Culture as Catalyst

Tuesday, April 26th
10:00 am – 10:30 am, DesignWell Pavilion

Marquise Stillwell believes in people, and building community, in creating spaces that acknowledge our shared humanity, while giving value to our differences. He posits culture—art, music, activism, design—as a catalyst to bring us all together.

PRESENTER:

- Marquise Stillwell, Openbox

HDAC Series: Holistic Wellbeing and Community by Design

Wednesday, April 27th
12:00 pm – 1:00 pm, DesignWell Pavilion

The Hospitality Diversity Action Council looks at leading-edge, DEI-driven ideas for community-building and wellbeing by design. Exploring new brands, pro bono work, and more, industry leaders discuss why holistic design matters to hospitality.

PRESENTERS:

- Dyonne Fashina, Denizens of Design
- Damon Lawrence, Homage Hospitality
- Crystal Vinisse Thomas, Hyatt Hotels
- Bashar Wali, ThisAssembly

Designing with Soul

Wednesday, April 27th
11:00 am – 12:00 pm, HD Social Hub

Authentic may be the most overused term in the industry, but it's what many in hospitality strive for. From creating new spaces from scratch, to rehabbing existing buildings, we dive into how to create a coveted, guest-centric, holistic concept that leaves a last impression.

PRESENTERS:

- Jou-Yie Chao, Post Company
- Kevin O'Shea, Salt Hotels
- Maija Kreishman, Michael Hsu Office of Architecture

UNLV: Lessons from the Lab

Thursday, April 28th
10:00 am – 11:00 am, HD Park

At the University of Nevada Las Vegas (UNLV) Hospitality Design Lab, M.Arch. students tackle design challenges in evolutionary ways. From designing bioengineered hotel interiors to planning for drone services within resorts, the new generation of designers shares lessons learned through research and simulations.

PRESENTERS:

- Glenn Nowak, UNLV
- Dillon Denig, UNLV
- John Hardy, The Hardy Group
- Yasmin Soliman, Cooper Carry
- Osarodian "Victory" Igbinobaro, UNLV
- Gabrielle Fernandez, UNLV



Create an Opportunity to Escape

Rest & Refuge™ Rigid Core Flooring

In a hyper-connected world, create an opportunity to escape with Rest & Refuge™. The natural details of authentic wood designs embrace a warmer approach to minimalism and mindful simplicity. Rest & Refuge transforms hospitality spaces for a welcoming guest experience.

ArmstrongFlooring™
Walk On. Walk Strong.™



Contact your sales representative to learn more or visit **ArmstrongFlooring.com**

PREMIUM MEMBERS

NEWH is fortunate to have so many dedicated and active premium members. Throughout the year, we are able to fulfill our mission of providing scholarships, education, leadership development, and recognition of excellence within our industry because of your generous support. We do not take that lightly and always want you to know how much you mean to NEWH. From all of us to all of you, THANK YOU!

Corporate Partner

AMERICAN ATELIER, INC.

Allentown, PA
aaihospitality.com

ARTERIORIS CONTRACT

Lewisville, TX
arteriorshome.com/contract

ARTLINE GROUP

Hicksville, NY
artlinegroup.com

ASHLEY LIGHTING, INC.

Trumann, AR
ashleylighting.com

BERNHARDT HOSPITALITY

Lenoir, NC
bernhardthospitality.com

BRINTONS

Kennesaw, GA
brintonsusa.com

CHAPMAN HOSPITALITY LIGHTING

Avon, MA
chapmanco.com

CROSSLEY AXMINSTER

Greenville, MS
crossleyax.com

CRYPTON + NANOTEX

Bloomfield Hills, MI
crypton.com

DELTA FAUCET COMPANY

Indianapolis, IN
deltafaucet.com

DOWN ETC.

Millbrae, CA
downetc.com

DURKAN HOSPITALITY

Dalton, GA
durkan.com

EMERALD (HD & BD EXPOS)

Alpharetta, GA
emeraldtx.com

ENCORE HOSPITALITY CARPET

Calhoun, GA
encorehospitalitycarpet.com

FABRICUT CONTRACT / S. HARRIS

Tulsa, OK
www.fabricutcontract.com

FIL DOUX TEXTILES

Brooklyn, NY
fildoux.com

ISG INSTALLATION SERVICE GROUP

Windermere, FL
isg.cc

KB CONTRACT

Roswell, GA
kbcontract.com

KIMBALL HOSPITALITY

Jasper, IN
kimballhospitality.com

LILY JACK

Inglewood, CA
lilyjack.com

MANDY LI COLLECTION

Alhambra, CA
mandylicollection.com

MILLIKEN FLOORS

Spartanburg, SC
milliken.com

MOEN / HOUSE OF ROHL

North Olmsted, OH
moen.com

P/KAUFMANN CONTRACT

New York, NY
pkcontract.com

PORCELANOSA

Ramsey, NJ
porcelanosa.com

PTY LIGHTING, LLC

Hillside, NJ
ptylighting.com

RICHLOOM CONTRACT

New York, NY
richloomcontract.com

SERGE FERRARI

Deerfield Beach, FL
sergeferrari.com

SERTA SIMMONS HOSPITALITY

Doraville, GA
serta.com

SHAW CONTRACT HOSPITALITY

Cartersville, GA
shawhospitalitygroup.com

SHELBY WILLIAMS, A CF GROUP BRAND

Newport, TN
shelbywilliams.com

SIGNATURE

Dalton, GA
signaturecarpets.com

SUMMER CLASSICS CONTRACT

Pelham, AL
summerclassics.com

SURYA CONTRACT

White, GA
surya.com

TARKETT HOSPITALITY

Dalton, GA
tarketthospitality.com

TLS FURNITURE

Indianapolis, IN
tlsbydesign.com

TROPITONE FURNITURE COMPANY, INC.

Irvine, CA
tropitone.com

ULSTER

Marietta, GA
ulstercarpets.com

VALLEY FORGE FABRICS, INC.

Fort Lauderdale, FL
valleyforge.com

WALTERS

Teterboro, NJ
walterswicker.com

Business Plus

ARCHITEX INTERNATIONAL

Northbrook, IL
architex-ljh.com

ELKAY INTERIOR SYSTEMS

Milwaukee, WI
elkayinteriorsystems.com

GRAFF

Milwaukee, WI
graff-designs.com

Brand Partner

RATANA INTERNATIONAL LTD

Vancouver, BC
ratana.com

SIERRA NEVADA HOSPITALITY BY GARY PLATT

Reno, NV
garyplatt.com

THANK YOU
NEWH PREMIUM MEMBERS



encore

carpet | rugs | resilient

VISIT US AT

hd expo+
conference

BOOTH 5435

4.26.22 - 4.28.22



CP22076 shown



HOSPITALITY | SENIOR LIVING | MULTI-FAMILY | GAMING

AREA RUGS | AXMINSTER | CARPET TILE | COLORPOINT | HANDTUFTED | INFINITY | DYE INJECTION | RESILIENT FLOORING | RUNNING LINE

(844) 225-3100 encorecarpet.net

PREMIUM MEMBERS

Green Voice

AMTREND CORPORATION

Fullerton, CA
amtrend.com

ARMSTRONG FLOORING, INC.

Lancaster, PA
armstrongflooring.com/commercial

FLORIDA SEATING, INC.

Clearwater, FL
floridaseating.com

READ WINDOW PRODUCTS, INC.

Knoxville, TN
readwindow.com

STICKLEY CONTRACT

Manlius, NY
stickleycontract.com

Chapter Level Business - Top Tier

ARCHITESSA/WASHINGTON DC

Rockville, MD
architessa.com

BASKERVILL

Richmond, VA
baskervill.com

CH DESIGN STUDIOS

Houston, TX
chdesignstudios.com

CUNNINGHAM/MINNEAPOLIS

Minneapolis, MN
cunningham.com

DESIGN POOLE, INC.

Winter Park, FL
designpoole.net

EOA, INC.

Coral Gables, FL
eoagroup.com

FURNITURE INDUSTRIES, INC.

New Hope, MN
furnitureindustries.com

GENSLER/MIAMI

Miami, FL
gensler.com

HILTON GLOBAL DESIGN SERVICES

McLean, VA
hilton.com

JCQ SERVICES, INC.

Orlando, FL
jcqservices.com

KIMBERLY TIMMONS INTERIORS

Denver, CO
ktinteriors.com

LEO A DALY/DALLAS

Dallas, TX
leoadaly.com

MATCHLINE DESIGN GROUP, LLC

Dallas, TX
matchlinedesign.com

RICE FERGUS MILLER

Bremerton, WA
rfmarch.com

SENSARIA

High Point, NC
sensaria.com

WEST END INTERIORS, LLC

Nashville, TN
westendint.com

Chapter Level Business

//3877

Washington, DC
studio3877.com

5-STAR INTERIOR SERVICES, INC.

Paramount, CA
5starinterior.com

ACC DESIGN

Memphis, TN
accdmemphis.com

ALL AROUND REPS

Greensboro, NC
allaroundreps.com

ANDAAZ MANUFACTURING

Houston, TX
andaaзмfg.com

API DEVELOPMENT CONSULTANTS, INC.

Oakville, ON, Canada
apidevelopmentconsultants.com

ARCHITECTURAL SURFACES, INC./LAS VEGAS

Las Vegas, NV
arcsurfaces.com

ARCHITECTURAL SURFACES, INC./NORTHWEST

Seattle, WA
arcsurfaces.com

ARCHITECTURAL SYSTEMS, INC.

New York, NY
archsystems.com

ARCHITESSA/ATLANTA

Atlanta, GA
architessa.com

ARCSINE

Oakland, CA
arcsine.com

ARIZONA TILE/DALLAS

Dallas, TX
arizonatile.com

ATMOSPHERE COMMERCIAL INTERIORS

Minneapolis, MN
atmosphereci.com

AUGUSTO S.R.L.

Jesi, Ancona, Italy
augustocontract.com

AVANT GARDE CONTRACT BY MASTER FABRICS

Montreal, QC, Canada
masterfabrics.com

B+N INDUSTRIES, INC.

New York, NY
bnind.com

BANDURADESIGN

Washington, DC
banduradesign.com

BANKO DESIGN

Marietta, GA
bankodesign.com

BAR NAPKIN PRODUCTIONS

Phoenix, AZ
bnp-llc.com

BARBAROSSA LEATHER

Royal Palm Beach, FL
barbarossaleather.com

BENJAMIN WEST/UNITED KINGDOM

London, United Kingdom
benjaminwest.com

BERGMAN WALLS & ASSOCIATES (BWA)

Henderson, NV
bwaltd.com

BERMANFALK HOSPITALITY GROUP

Langley, BC, Canada
bermanfalk.com

BIGTIME DESIGN STUDIOS

Miami, FL
bigtimedesignstudios.com

BILL ROONEY STUDIO, INC.

New York, NY
billrooneystudio.com

BRPH

Orlando, FL
brph.com

C F KENT CONTRACT

City of Commerce, CA
cfkent.com

C+TC DESIGN STUDIO

Atlanta, GA
ctcdesignstudio.com

C2C DESIGNS

Moorestville, NC
c2cdesigns.com

CARROLL ADAMS GROUP, INC./ HIGH POINT

High Point, NC
carrolladams.com

CARROLL ADAMS GROUP, INC./ ORLANDO

Orlando, FL
carrolladams.com

THANK YOU
NEWH PREMIUM MEMBERS

Proudly
MADE IN THE USA!

Project: Charter Hall
Location: Roanoke, VA
Mario Design: CC4598



MARIO
Mfg. Co.
1922

MC
MARIO
CONTRACT LIGHTING
2022

Celebrating 100 Years of Excellence!
www.mariocontractlighting.com




DoubleTree by Hilton
Pittsburgh Airport
Pittsburgh, PA

AAI
AMERICAN ATELIER, INC.
aaihospitality.com



2132 Downyflake Lane, Allentown, PA 18103-4725 • clientservices@aaihospitality.com



PIERPOINT
Textiles | Area Rugs | Accessories
PierPointUSA.com

The Ray Hotel, Delray Beach, FL
Design by: Virserius Studio
Purchased by: The Maddox Company

PREMIUM MEMBERS

CARROLL LEATHER

Conover, NC
carrollleather.com

CARVER & ASSOCIATES, INC./ ATLANTA

Atlanta, GA
carverassoc.com

CERAMICHE ATLAS CONCORDE, S.P.A.

Spezzano di Fiorano, Modena, Italy
atlasconcorde.com/en/

CHARLESTON FORGE

Boone, NC
charlestonforge.com

CIOT, INC./NEW YORK

Brooklyn, NY
ciot.com

COMPOSITION HOSPITALITY

Ontario, CA
compositionhospitality.com

CORTES PURCHASING, LLC

Plainview, NY
cortespurchasing.com

COUNTRY CASUAL TEAK

Gaithersburg, MD
countrycasualteak.com

CROSSWATER LIMITED

Kent, United Kingdom
crosswater.co.uk

DAC ART CONSULTING

Atlanta, GA
dacartconsulting.com

DASH DESIGN

Long Island City, NY
dashdesign.net

DECORATOR'S LIGHTING, INC.

Nashua, NH
decoratorslighting.com

DEGEN & DEGEN ARCHITECTURE AND INTERIOR DESIGN

Seattle, WA
ddseattle.com

DESIGN ATELIER

San Rafael, CA
design-atelier.net

DESIGN LINK INTERNATIONAL, INC.

Hamilton, ON, Canada
designlink.ca

DESIGNWISE, INC.

White Bear Lake, MN
designwiseinteriors.com

DICKINSON CONTRACT MARKETING

Ryland Heights, KY
dickinsoncontract.com

DLR GROUP/CHICAGO

Chicago, IL
dlrgroup.com

DMG FLORIDA

Orlando, FL
dmgflorida.com

DYER BROWN ARCHITECTS

Boston, MA
dyerbrown.com

DYNAMIC STONE

Carrollton TX
dynamic-stone.com

EDG INTERIOR ARCHITECTURE + DESIGN

Novato, CA
edgdesign.com

EGGER GROUP

Linwood, NC
egger.com

EJ VICTOR HOSPITALITY

Morganton, NC
ejvictor.com

ELEMENTUM INTERIORS

Columbia, SC
elementuminteriors.com

EMUAMERICAS, LLC

Wheat Ridge, CO
emuamericas.com

EXPORMIM USA LLC

New York, NY
expormim.com

F. SCHUMACHER & COMPANY

New York, NY
fschumacher.com

FELTUS HAWKINS DESIGN

Nashville, TN
fhdesign.com

FILLAT+ ARCHITECTURE

Washington DC
pfarc.com

FIRST FINISH, INC.

Columbia, MD
firstfinish.net

FRANKLITE LIMITED

Milton Keynes, Buckinghamshire,
United Kingdom
franklite.co.uk

FURNITURE ATELIER

Vaughan, ON, Canada
furniture-atelier.com

FUSION ARCHITECTURAL INTERIOR DESIGN

Woodstock, GA
fusionaidesign.com

GALAXY GLASS & STONE

Fairfield, NJ
galaxycustom.com

GARRETT LEATHER CORPORATION

Buffalo, NY
garrettleather.com

GARRISON HULLINGER INTERIOR DESIGN

Portland, OR
ghid.design

GAS STUDIO S.R.L.

Milano, Italy
gasworkstudio.com

GENSLER/DALLAS

Dallas, TX
gensler.com

GENSLER/SAN FRANCISCO

San Francisco, CA
gensler.com

GLADSTONE INDUSTRIES CORPORATION

Las Vegas, NV
gladstoneindustries.com

GODDARD LITTLEFAIR LTD

London, United Kingdom
goddardlittlefair.com

GOEBEL DESIGN GROUP

Tucson, AZ
goebeldesigngroup.com

GRABINSKI GROUP, INC.

Chicago, IL
grabinskigroup.com

GRANITI VICENTIA GROUP

Houston, TX
granitivicentia.com

GRAPHIC STUDIO, INC. DBA ADNORMOUS GRAPHICS

Marietta, GA
adnormous.com

GROUP ONE PARTNERS, INC.

Boston, MA
groupponeinc.com

GS ASSOCIATES, INC.

Newburyport, MA
gsa-inc.com

HAWA SLIDING SOLUTIONS

Dallas, TX
hawa.com/en

HB ARCHITECTURAL LIGHTING, INC.

Bronx, NY
hblightinginc.com

HBA/HIRSCH BEDNER ASSOCIATES/SAN FRANCISCO

San Francisco, CA
hba.com

HBC DESIGN GROUP

Greenwood Village, CO
hbcdesigngroup.com

HOLLYWOOD BED FRAME COMPANY

Commerce, CA
hollywoodbed.com

THANK YOU
NEWH PREMIUM MEMBERS

27th Annual The Lodging Conference 2022

www.thelodgingconference.com

September 19th - 22nd, 2022 - JW Marriott Desert Ridge - Phoenix, AZ

The Hotel Industry's Premier Development Conference



PREMIUM MEMBERS

HOSPITALITY FURNISHINGS & DESIGN, INC.

Zelienople, PA
hfdcorp.com

HOSPITALITY PLUS

Centennial, CO
hospitalityplus.biz

HOSPITALITY RESOURCES & DESIGN, INC.

Orlando, FL
hrdorlando.com

HOTEL CONCORDE S.R.L.

Milano, Italy
hotelconcordemilano.com

HR CONSTRUCTION GROUP, INC.

Columbia, MD
hrconstruction.com

HTK DESIGN, LLC

High Point, NC
htkdesign.com

HVS DESIGN

Rockville, MD
hvsdesign.com

HYDRO SYSTEMS

Valencia, CA
hydrosystem.com

IIG/CHICAGO

Crown Point, IN
iigdesign.com

IIG/ORLANDO

Celebration, FL
iigdesign.com

IIG/SOUTH FLORIDA

Cooper City, FL
iigdesign.com

JACLO INDUSTRIES

Cranford, NJ
jaclo.com

JAJ CONTRACT FURNITURE, INC.

Mount Vernon, NY
jajfurniture.com

JASPER CHAIR COMPANY

Jasper, IN
jasperchair.com

JONES LANG LASALLE

Washington, DC
us.jl.com

JTB FURNITURE

Columbus, MS
jtbfurniture.com

JUSTICE FURNITURE & MATTRESS

Lebanon, MO
justicefurniture.com

KIEFFER DESIGN GROUP

Boise, ID
kiefferdesigngroup.com

KOVET HOSPITALITY

Bonita, CA
kovethospitality.com

L2 STUDIOS, INC.

Orlando, FL
l2studios.com

LE FER FORGE DRAPERY HARDWARE

Miami, FL
leferforge.com

LEGAT ARCHITECTS

Chicago, IL
legat.com

LEIVI DESIGN LLC

Lombard, IL
leividesign.com

LEN-TEX CORPORATION

North Walpole, NH
lentexwallcoverings.com

LINOWES DESIGN + ARCHITECTURE STUDIO

Rockville, MD
linowesdesign.com

LOLOEY SRL

Corsico, Milano, Italy
loloey.com

LONDONART S.R.L.

Noventa Vicentina, Vicenza, Italy
londonart.it

LORTS MANUFACTURING

Goodyear, AZ
lorts.com

LUTEX DESIGN, INC.

Montreal, QC, Canada
lutexdesign.com

MAGDA GREEN DESIGN

Philadelphia, PA
magdagreendesign.com

MARS, MAYFIELD AND RAGNI STUDIO

Houston, TX
marsculture.com

MENDIL + MEYER DESIGN STUDIO

Scottsdale, AZ
mandmds.com

MG2 CORPORATION

Seattle, WA
mg2.com

MGM RESORTS INTERNATIONAL

Las Vegas, NV
mgmresorts.com

MID-ATLANTIC LIGHTING, LLC

Lorton, VA
mid-atlanticlighting.com

MURPHY CRAMER DESIGN

Dallas, TX
mcdesign.com

NEWMOR WALLCOVERINGS

Powys, Wales, United Kingdom
newmor.com

NOBLE HOUSE HOTELS & RESORTS

Kirkland, WA
noblehousehotels.com

NOELKER AND HULL ASSOCIATES, INC.

Chambersburg, PA
noelkerhull.com

NOVUS ARCHITECTURE, LLC

Las Vegas, NV
novusarchitecture.com

O2 ASSOCIATES LLC

Stamford, CT
o2assoc.com

ODYSSEY WALLCOVERINGS

Toronto, ON, Canada
odysseywallcoverings.com

OXFORD GARDEN

Simpsonville, KY
oxfordgarden.com

PANAZ, LTD.

Burnley, Lancashire, United Kingdom
panaz.com

PANDA WINDOWS & DOORS

Las Vegas, NV
panda-winidows.com

PEACOCK + LEWIS ARCHITECTS AND INTERIOR DESIGNERS

North Palm Beach, FL
peacockandlewis.com

PENNY & LUCY LOU ART

Columbia, SC
pennyandlucylou.com

PI FINE ART/DIVISION OF POSTERS INTERNATIONAL

Toronto, ON, Canada
pifineart.com

PIERPOINT, LLC

Orlando, FL
pierpointusa.com

PIERRE-YVES ROCHON, INC.

Chicago, IL
pyr-design.com

PILLOWS BY DEZIGN, LLC

Kentwood, MI
pillowsbydezign.com

POGGESI USA

Miramar, FL
poggesiusa.com

PROSTAR CONTRACTING

Burnaby, BC, Canada
prostar.ca

PURCHASING MANAGEMENT INTERNATIONAL

Dallas, TX
pmconnect.com

RICHMOND INTERNATIONAL

London, United Kingdom
richint.com

THANK YOU
NEWH PREMIUM MEMBERS



INDOOR / OUTDOOR

Tactile and inviting, our Without Reservation upholstery collection features casually sophisticated patterns and textures designed to enhance indoor and outdoor environments—and all the spaces in between. Hardworking novelty yarns combine bleach cleanability with touchable luxury in chenille, bouclé, and two-way slub constructions. The fabrics combine powerhouse performance and must-have designs with recycled content. All patterns are American-made and feature fluorine-free spill protection that performs with reduced levels of harmful chemicals.

P/Kaufmann
CONTRACT

SAMPLES / info@pkcontract.com

TEL / 212-292-2352

PKCONTRACT.COM



BERNHARDT HOSPITALITY

CUSTOM | INLINE | GUEST ROOM | PUBLIC SPACE | OUTDOOR

bernhardthospitality.com

PREMIUM MEMBERS

ROCA USA INC.

Chicago, IL
rocatileusa.com

ROSEBERNARD STUDIO

San Francisco, CA
rosebernardstudio.com

ROTTET STUDIO/NEW YORK

New York, NY
rottetstudio.com

RUSTBELT RECLAMATION

Cleveland, OH
rustbeltreclamation.com

SANDERSON DESIGN GROUP

Denham, Bucks, United Kingdom
contract.sandersondesigngroup.com

SELF ELECTRONICS USA CORPORATION

Peachtree Corners, GA
self-electronics.com

SENA HOSPITALITY DESIGN, INC.

Orlando, FL
senahospitality.com

SHURWAY CONTRACTING LTD.

Toronto, ON, Canada
shurway.ca

SIERRA NEVADA HOSPITALITY BY GARY PLATT

Reno, NV
garyplatt.com/hospitality

SIMS PATRICK STUDIO, INC.

Atlanta, GA
simspatrickstudio.com

SLOAN VALVE COMPANY

Franklin Park, IL
sloan.com

SMITH BROWN

Dallas, TX
smithbrown.com

SOFT TOUCH FURNITURE

Girard, OH
softtouchfurniture.com

SOPHSTONE, INC.

Fresno, CA
sophstone.com

SPEK CREATIVE

Chevy Chase, MD
spekcreative.com

STANTEC/MIAMI

Miami, FL
santec.com

STONE SOURCE, LLC

New York, NY
stonesource.com

STUDIO GREY

Minneapolis, MN
studiogreydesign.com

STUDIO PARTNERSHIP

Sparks Glencoe, MD
studiopartnership.net

SUNBRITE OUTDOOR FURNITURE INC.

Orlando, FL
sunbritefurniture.com

SUOMI DESIGN WORKS

New York, NY
suomidesignworks.com

SYMMETRY RESOURCES

Connelly Springs, NC
symmetryresources.com

SYMMONS INDUSTRIES, INC./TORONTO

Braintree, MA
symmons.com

TABLEAUX

Austin, TX
tableaux.com

TANDEM

Las Vegas, NV
tandemlasvegas.com

TARRISON PRODUCTS LTD.

Oakville, ON, Canada
tarrison.com

THE CHEGA GROUP

Scarborough, ON, Canada

THE MATERIAL COLLECTIVE

Phoenix, AZ
thematerialcollective.com

THE SOCIETY

Portland, OR
welcometothesociety.com

THE TABLE FACTORY

Waterloo, ON, Canada
thetablefactory.ca

THE WRIGHT HOSPITALITY GROUP LAS VEGAS

North Las Vegas, NV
wrighthospitalitylv.com

THOMAS HAMILTON & ASSOCIATES, PC.

Richmond, VA
thomashiltonassociates.com

TILEBAR

New York, NY
tilebar.com

TMG ASSOCIATES, INC.

Pittsburgh, PA
tmgassociates.net

TORONTO INTERNATIONAL DESIGN CENTER

Mississauga, ON
exploretidc.com

TRIPLE CROWN CONSTRUCTION, LLC

Frederick, MD
triplecrownconstruction.com

TURNER HOSPITALITY RESOURCE

Edina, MN
turnerhospitality.com

UNITED FABRICS

Pennsauken, NJ
unitedfabrics.com

V STARR

West Palm Beach, FL
vstarr.com

VARIANT COLLABORATIVE

Chicago, IL
variantco.com

VETERANS PROCUREMENT GROUP, LLC

Las Vegas, NV
vpgdirect.com

VIDA DESIGN, INC.

Portland, OR
vida-design.com

VIFLOOR CANADA, LTD.

Toronto, ON, Canada
vifloor.com

WAC LIGHTING/MODERN FORMS

Port Washington, NY
waclighting.com

WALL&DECÒ S.R.L

Cervia, Ravenna, Italy
wallanddeco.com

WESTPORT MANUFACTURING CO., LTD./TORONTO

Mississauga, ON, Canada
west-port.com

WESTPORT MANUFACTURING CO., LTD./VANCOUVER

Vancouver, BC, Canada
west-port.com

WILLIAM MONTAGUE

Englewood, FL
williammontague.com

WOODCRAFT HOSPITALITY

Addison, IL
woodcrafthospitality.com

ZANOTTA S.P.A

Nova Milanese, Monza and Brianza, Italy
zanotta.it

THANK YOU
NEWH PREMIUM MEMBERS



OUTBOUND COLLECTION

The OUTBOUND Collection is influenced by the dimensional shapes of storage and shipping containers. The bold, abstract patterns bring movement to hospitality interiors and energize guest experiences from public spaces, corridors, guest rooms and everywhere in between.



HAVE YOU SEEN?

1. Inspired by the material suggestions of hand-worked stone, 3D Wall Carve by **Atlas Concorde** is characterized by refined, minimal microtextures with a range of surfaces with sober tones. The natural irregularity of the 3D reliefs lends itself to evocative light effects that are simple, yet with a sophisticated visual impact.

atlasconcorde.com

2. A playful abstraction, **Innovations'** Yakisugi pattern explores line and connection with a new technique for cork wallcoverings. Surface-dyed sheets of natural cork are first laser cut then backed with metallic foil to highlight the linework. Laser cutting burns the material, creating a dark outline and inspiring the wallcovering's name—a reference to traditional Japanese charred cedar. Yakisugi installs as a partial match or non-match in a fluid pattern that becomes the focal point.

innovationsusa.com

3. **Samuelson Furniture's** refreshed design for the #8875 Occasional Chair includes a caning detail outlined by a striking stainless-steel frame with a matching recessed swivel base. A plush seat with a loose cushion achieves optimal comfort.

samuelsonfurniture.com

4. More is more with Gilded blackout drapery from **P/Kaufmann Contract**. These IMO-compliant styles offer a range of looks, from statement patterns to a subtle hint of shimmer. A combination of traditional engraving and digital printing techniques renders designs including Art Deco geometrics, dynamic marbling, and abstract etching effects by layering durable metallic foil over a textured background.

pkcontract.com



5. The 79 unique textiles within **Valley Forge Fabric's** first volume of Upcycled Marine Upholstery are woven with yarns that are made with plastics reclaimed from oceans, coastal areas, and other waterways, including ocean-bound plastics. This collection gives the concept of recycled and upcycled plastics a new perspective by utilizing the plastic trash and litter in our waterways, instead of plastics found only on land and in landfills.

valleyforge.com



6. **HB Lighting** manufactured this large-scale custom chandelier, made entirely in its New York City factory, for the Thompson Central Park hotel. hblighting.com



CROSSLEY AXMINSTER

www.crossleyax.com

Global Manufacturer of Custom Axminster Carpet &
Hand Tufted Rugs for the Hospitality Industry

BREAST CANCER GRANT AVAILABLE

TO HOSPITALITY PROFESSIONALS AND YOUR FAMILY



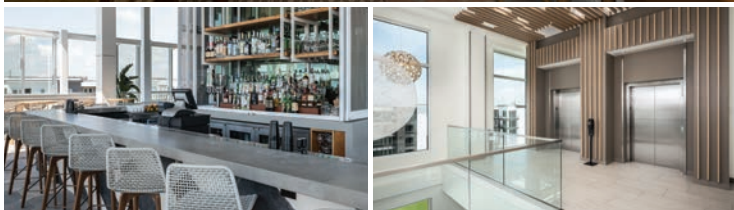
the
common
thread
for the
cure

APPLY FOR A GRANT

www.commonthreadfortheure.org
grants@commonthreadfortheure.org

DOMESTIC MILLWORK + CASEGOODS MANUFACTURER

Leave your project to the pros. Utilize
our experts and 40+ year legacy to
build and install your design intent.



ELKAYINTERIORSYSTEMS.COM

CUSTOM MANUFACTURER www.andaazmfg.com



Andaaz
MANUFACTURING
CASEGOODS | SEATING | LIGHTING

hd expo+
conference
BOOTH #5255

HAVE YOU SEEN?



7



8



9

9. From the **Native Spun** Performance collection, Peak combines an exaggerated chevron weave with a boucle yarn. Woven in the U.S. using solution-dyed acrylic, Peak is fade- and UV-resistant, inherently mold- and mildew-resistant, and can be commercially laundered with bleach or hydrogen peroxide solutions.
nativespun.com

7. **Wall&deco's** Contemporary Wallpaper Collection 2022 features 72 new designs grouped into three moodboards in both visual and photographic representation: Deep Nature, Red Heart, and Heritage. The collection can be discovered at the WeMU—Wall&deco Experience Museum—a virtual museum to view graphics on display, explore contents, and enjoy audio contributions offered by the designers themselves.
wallanddeco.com

8. **Brintons** continues its Self Expression Project with the Patria collection. The new release contains 13 Axminster designs based on memories, customs, architecture, and history of the hometowns personal to the Brintons design team. Each pattern is fully customizable with the option to choose up to 32 colors per design for adding levels of depth and texture.
brintons.net



11

10. In collaboration with designer Geoffrey Woodrum, **Jamie Stern Furniture, Carpet & Leather** introduces the Geoffrey Woodrum Rug Collection. Panache (shown), Joya, and Elan are playful and timeless hand-tufted area rugs made with New Zealand wool. Geometric patterns, curvy lines, and bold block colors characterize the three area rugs in this collection.
jamiesterndesign.com

11. The Corolla tables, exclusively sold by **StyleNations**, maintain the soft and harmonious lines of the main Corolla seating collection. Available in three sizes, they combine a conical base that ends with the feature wave effect for the seating with round tops. The solid ash rounded top edges are inset with various surface types: stained ashwood, red travertine marble, natural cork colored turquoise, and Alpi Sottass and Evergreen Walnut Burl woods.
stilenations.com



10



12

12. Three coated fabrics in the Great Pretenders collection from **Architex** mimic the look and feel of woven textiles in 24/7 non-woven upholstery constructions. Patterns Crepon, Grasscloth, and Muslin assume the textile weaves of the same names and are offered in 44 colorways ranging from deep indigos to creamy naturals.
architex-ljh.com

RATANA

VANCOUVER • ATLANTA • DALLAS • CHICAGO

residential | contract | hospitality | ratana.com | 1 866 919 1881

HAVE YOU SEEN?



13

13. Diamond Cloud is a contemporary addition to luxurious and classical interiors and works as a sparkling statement chandelier in minimalist spaces. The concept is a **Preciosa Lighting** Signature Design composed from triangular rods. The Diamond Cut is used on the components, which also feature different cut-glass treatments. The piece is customizable by composition, size, suspension types, lighting effects, and more.

preciosa.com



14

14. The Bar Cart by Parker Torres Design, crafted especially for **Furniture Atelier**, is both an aesthetic and practical addition to the room. Clad in a rich, ribbed charcoal, the oval-shaped cart has an adjustable shelf, wine storage, and an antique brass ice bucket for champagne recessed beneath a dark stone top. With its textured brass handrail and concealed lockable casters, the cart is easy to transport.

furniture-atelier.com

15. Adding to its line of roller shade fabrics, **EE Sewing** announces the River collection. This abstract woven pattern comes in seven colors ranging from cooling Ice to dramatic Granite. It is also certified as Greengard Gold.

eesewing.com



15



16



17

16. Häfele's new Inception Vinyl program allows the customization of a wide range of components—including headboards, countertops, cabinet doors, drawer fronts, shelves, and more—while staying within budget. The beautifully crafted, leather-like product is constructed from durable, responsibly sourced material which is resistant to wear, staining, and abrasion. It is available in two textures and 16 color options.

hafele.com

17. Blum, by Manel Molina for **Expormim**, is visually simple but with a sophisticated internal structure intended both for indoor and outdoor use. Originally made of aluminum, it is now also available in a classic four-legged and pyramid-shaped base made of FSC certified sapele wood.

expormim.com

18. **LX Hausys** has introduced several new surface colors, including the HIMACS Calacatta collection and Calacatta Luna (shown)—a first for the industry bringing the look of Italian calacatta marble to solid surfaces. Two new Pietra collection colors, Nebbia and Ombra, were introduced, as was Silver Gravel, a new color to the Volcanics collection.

lxhausys.com/us



18



SEE US AT
HD EXPO
 APRIL 26-28
 BOOTH
 #4627

ARTLINE GROUP

FRAMED ART • LASER CUT • ACRYLIC • CANVAS • WALL COVERING • MAPS
 WOOD • LIGHTED MIRRORS • CUSTOM MIRRORS • MOSS WALLS

Discover our new Natural Collection



**fil
doux**

MILL DIRECT • TEXTILE LAB • WWW.FILDoux.COM



where inspiration is built.

KH Kimball
Hospitality



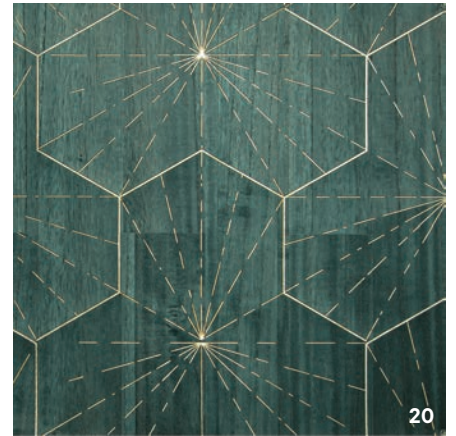
Walters™

Georgica Collection
walterswicker.com/georgica

HAVE YOU SEEN?

19. Douglass introduces Andante, finished with its graffiti-resistant topcoat. The performance powerhouse reduces replacement costs and preserves upholstery integrity, luster, and softness. Its FORBID finish resists stains such as ink, sharpie, lipstick, red wine, coffee, or indigo dye.
dougind.com

20. Maya Romanoff and Jeffrey Beers International have once again collaborated on Ajiro Burst of Happiness. Ajiro is a hand-inlaid wood veneer created by laying slices of Paulownia wood onto a flexible paper backing, modernizing the traditional Japanese process with die-cutting to allow a metallic foil to shine through, creating joyful shapes and surges. It is offered in 10 colorways and cleanable with disinfectant wipes or a diluted bleach solution.
mayaromanoff.com

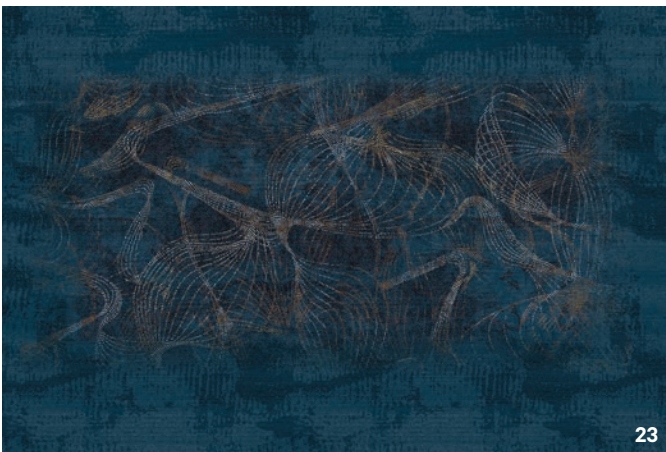


21. This contemporary chair from **Trend Contract Furnishings** found a home at LAVO Fleur Lounge in West Hollywood, California. The vision and fabric selections from the design team at Tara Bean Designs bring the piece to life.
trendcontractfurnishings.com

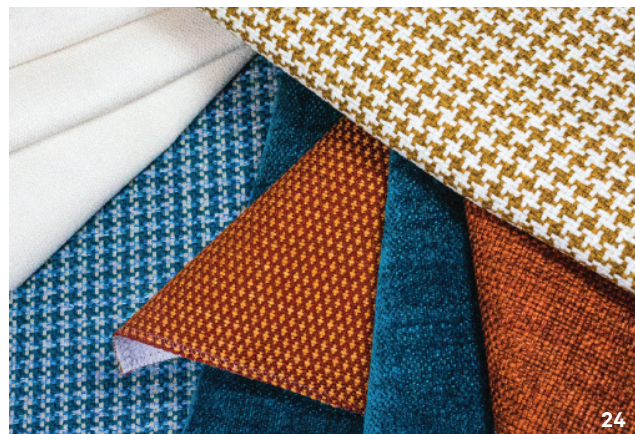


22. Soak up a little bit of inner sunshine with **Encore's** Kitsy, a functional guest chair collection with a light and nimble design that allows for convenient stacking capabilities. A spectrum of base styles, colorful shell, and upholstery choices create a dynamic focal point.
encoreseating.com

23. Inspired by continuous motion and defined by inertia, Limitless represents **Royal Thai's** grit and commitment to growth. Through a curated showing of 11 Axminster and handtufted designs, a common thread of linear movement courses through the collection, which is washed in a sea of inky blues.
royalthai.com



24. Cowan, Cromwell, Kline, O'Malley, and Thatcher from **KB Contract** feature Supreen stain and moisture resistance technology that ensures that no liquid will ever penetrate the fabrics. The durable patterns exceed contract-grade performance standards, are environmentally conscious, and are ready for bleach, making them the perfect choice for any high-traffic design.
kbcontract.com





CRUISE SHIP INTERIORS EXPO | AMERICA

WHERE CRUISE DESIGN COMES TO LIFE

325 EXHIBITORS | INSPIRING CONFERENCE PROGRAM | UNRIVALLED NETWORKING OPPORTUNITES

REGISTER FOR FREE TODAY AT:

www.cruiseshipinteriors-expo.com

7-8 JUNE 2022 | MIAMI BEACH CONVENTION CENTER

SUPPORTING BRANDS



HAVE YOU SEEN?



25



26



27

25. Unlike typical waterjet designs consisting of multiple materials, the Skord collection from **Audrey Lane** utilizes etched lines creating a solution between classic and modern. The etched patterns are brought to life by the designer's choice of grout joint color. Skord offers the simplicity of porcelain in a wide spectrum of bold and neutral shades with dramatic patterns resulting in a play of harmonies and contrasts.

audreylane.com

26. Custom tables and wall paneling from **ChopValue** is engineered from 233,000 recycled chopsticks creating a positive environmental impact of 320,000g carbon storage that otherwise would have been released in the atmosphere.

chopvalue.com

27. The Tibes chair by **Potocco of Italy** offers a fluid and slender silhouette with its soft organic lines. The chair stacks horizontally.

potocco.it

28. With an ultra-glossy surface and striking color variations, the Gleeze collection from **BPI's Prestige Tile & Stone** combines a range of design elements. Five hues are embellished with visual irregularities, and the collection of porcelain wall tile also features a 3D eye deco with a concave surface for added dimension and movement.

bpiprestige.com

29. **Bernhardt Hospitality's** new turnkey upholstery program includes 200 performance fabrics, offering a wide assortment of looks for seating, beds, and benches. With a 12-week lead time, the fabrics are well-stocked and offered at a single price point. Sample memos are available on request.

bernhardthospitality.com



28



29



30

30. **Wilsonart** has expanded its curated Virtual Design Library (VDL) with True Tones, a semi-custom laminate offering. An addition to the VDL Spectrum collection, True Tones includes 27 colors, plus the option to create custom color and branded surfaces. From deep blues to pastel greens and muted purples, True Tones brings the latest evolution in optical solid color to Wilsonart High Pressure Laminate (HPL).

wilsonart.com

POPS

POWER OF POSITIVE SLEEP BY down etc...

BE SAFE, CREATE



www.downetc.com



BELLAROSA
by Shelby Williams

Annabel Armchair

ShelbyWilliams.com

 **LOLOEY**

Axminster - Handtufted - Broadloom
For Hospitality and Cruise



www.loloey.com

Introducing the NEWH, Inc. Scholarship Recipients Awarded During the 2022 NEWH Leadership Conference



Caio Viviani

Caio Viviani

City College of San Francisco, Food Service and Hotel Management

\$7,500 NEWH Leadership Conference, Culinary



I am an international student from Brazil. I graduated in 2012 in business administration at Mogi das Cruzes University in Brazil. I love being part of the food industry and being able to spread my happiness and love through the cooking and dining experience. It feels fantastic sharing that feeling with people. Service, respect, passion, happiness, positive energy, and more are all factors that made me choose this career. Bringing some of Brazilian cuisine to American tables, helping improve recipes, creating new products, bringing different tastes, and introducing new ideas to people's lives and this industry.

My background in business administration has allowed me to practice great leadership and management skills, leading me to win two NEWH scholarships in 2018 and 2022 (San Francisco Bay Area chapter) as well as the 2022 NEWH Leadership Scholarship. The NEWH scholarship represents the incentive that I need to make my dreams come true. It allows me to move forward with my studies and start my professional career as a chef. This scholarship provides much needed support to my career, allows me to meet more people in the food industry, and provides a level of confidence that I can truly reach my dreams. I am very determined to fulfill my dreams. I cannot do it without outside help.

I intend to further my studies having a Food Service and Hotel Management degree to amplify opportunities, connections, and knowledge. I will keep applying all the classroom knowledge and techniques to a true work environment. I look forward to working in various areas of restaurants including back of the house and front of the house service, as well as learning food costing and accounting. I hope all these experiences will lead me to opening my own restaurant soon.



Delaney O'Brien

Delaney O'Brien
University of Tennessee, Knoxville, Interior Architecture

\$7,500 NEWH Leadership Conference, Interior Design



I am a third-year interior architecture student at the University of Tennessee, Knoxville. Throughout my schooling, I have made a self-directed focus on sustainable products and building methods within my projects. I plan to pursue a master's degree in sustainable architecture before starting a career in hotel and restaurant design specializing in sustainability.

NEWH provides an outstanding amount of resources that have aided in this self-driven effort and has aided my networking throughout this industry in so many ways. I want to create spaces and experiences that will be memorable for a lifetime, and in my experience hospitality design is extremely successful at that. This scholarship not only aids me and my family financially but opens up endless opportunities for learning about the hospitality industry. I am so thankful for this incredible honor and opportunity to be a NEWH scholarship recipient!

"Winning this scholarship helps me economically and psychologically. It means a great relief for my summer classes and the next fall term. Also, it showed me the importance of valuing my creative effort. Those COVID-19 times are hard, and this stimulus showed that my commitment paid off considerably."



Lauren Hart

Lauren Hart
University of Alabama, Hospitality Management

\$7,500 NEWH BrandED Scholarship in the name of Hyatt



I am from Orange Beach, Alabama. I attend the University of Alabama pursuing a master's degree in hospitality management and work full time for Brett/Robinson Real Estate Development Company in its development division. I have two daughters, Magnolia and Iris, who are in the 6th and 4th grades.

Once I graduate, I hope to remain employed with Brett/Robinson and would also like to teach evening classes locally at Coastal Alabama Community College. I also have dreams to work for a major corporation. I am currently focused on new construction condominiums. In my position, I am the liaison between the customer and the jobsite. I ensure everything is carried out seamlessly for our clients down to the last detail, combining my love of helping people with my love for design and project management.

This scholarship means so much to me and my daughters. I would not be in a position to pursue my master's degree without it. Receiving this scholarship has helped me break barriers and show single, working moms that you can follow your dreams and go far in life. Receiving this scholarship proves that if you put your mind to it and work hard, you can achieve anything! I truly appreciate the opportunity to represent NEWH. Thank you from the bottom of my heart for your support of my education!

Amber Asher

CEO of Standard International

By Can Faik

Photography courtesy of Standard International

Hospitality Interiors had the pleasure of speaking with Amber in her first interview since being appointed CEO of Standard International. With a decade of experience at the Standard alone, Amber has been instrumental in the company's global growth and, in her new role, will lead the organization and its portfolio into an exciting new phase of expansion. Read on to discover more about her career to date, her aspirations for Standard International, and valuable industry insights.



Amber Asher

What was your background prior to working for Standard Hotels?

I started my career as a real estate and finance lawyer at Latham & Watkins in New York. I went in-house in 2008 to Morgans Hotel Group months before the recession as associate general counsel and SVP. That was quite a ride. The hospitality business was upside down, similar to today. We navigated many challenges, and I learned a ton.

What are the most challenging issues you face in your current role?

The last two years have been incredibly challenging in the hospitality industry, with ever-changing travel restrictions, the priority of operating safely for our employees and guests, and finding talent to add to our growing team. That said, I believe the worst is behind us. As hard as this period was, we had extreme focus on our teams' wellbeing and development, global growth, creativity, profitability, and operational excellence.

Many of our hotels were back to 2019 numbers right before Omicron. We signed 11 new hotel deals across our three brands (Standard, Bunkhouse, and Peri) and will have opened eight new hotels during COVID (inclusive of the Standard, Hua Hin that opened in Thailand this past December, and our two beautiful new Standard hotels in Ibiza and Bangkok, opening this spring).



Skyline Studio at the Standard, East Village



The Standard, High Line



The Standard, Maldives



The Standard, Maldives



The Standard, Hua Hin



The Standard, Miami Beach

How do you see the company changing in the next two years, and how do you see yourself creating that change?

Global expansion is our mission—bringing the Standard to the world. We will strive to maintain the uniqueness and individuality of the hotels and embrace the local cultures of all the various cities across the globe, while ensuring a common thread so that our guests and loyalists will always feel at home. To us, the key is building and developing strong and dynamic local teams to welcome our guests.

We are also committed to the expansion of the Bunkhouse collection of hotels in the Americas—a company we took a majority stake in back in 2015—and the Peri brand, a brand we launched in Asia during the pandemic.

What role does Europe play in Standard Hotels’ growth?

Europe has always been a key target market for the Standard since I started at the company. We opened a flagship, the Standard, London in Kings Cross in 2019, with incredible partner, Crosstree. With the success of this opening and incredible team, we have quite a large pipeline in Europe. Our next opening will be the Standard, Ibiza, opening in late spring. We feel Ibiza is a

perfect location for the Standard. We are also working on projects in Lisbon, Brussels, Dublin, Milan, and many others at earlier stages. We have only scratched the surface. Our list of dream cities in Europe is long!

How does design play a role in driving customer loyalty?

The environments in which we live, work, and play have a tremendous impact on our experience. The Standard customer expects innovative yet timeless design from our hotels. From our longtime collaboration with world-renowned designer (and friend) Shawn Hausman—most recently to create our award-winning the Standard, London and the refresh of the Standard Spa, Miami Beach—to our work with Jaime Hayon on the Standard, Bangkok Mahanakhon, opening in May, we continue to innovate while maintaining a design language that inspires our guests to return to our hotels again and again.

In which parts of the hospitality experience is good design most important?

We integrate whimsy and humor in subtle ways through design details throughout our properties. In the guestrooms comfort is key, while the

Continued on p. 58)))



public spaces, restaurants, and bars—like The Standard Grill, Boom Boom Room, Decimo, and our new Thai Izakaya, Praca at the Standard, Hua Hin—should inspire.

Have you noticed any particular trends in interior design?

Yes. The trend we have noticed most in the past two years is an increased yearning to be outside in safe and creatively reimagined environments that become an extension of the hotel experience. We have created compelling outdoor experiences to provide environments for our guests that are both safe and fun: the Forest at the Standard, High Line, where we screen movies curated by our team in a series called Pix on the Plaza, which has been a tremendous success; while the Winter Garden at the Standard, East Village offers an ever-evolving experience that changes seasonally with a lush garden featuring oversized, magical topiaries in the spring and cozy yurts in the winter.

How would you define Standard Hotels' identity?

As we say, we are 'anything but Standard.' The Standard Hotels are stimulating cultural hubs and social destinations. We create unmatched experiences through design, culinary, and carefully curated events that are innovative, engaging, and memorable. Our unconventional approach promotes a certain kind of freedom where guests are immersed in our unique approach to lifestyle. We are not for everyone but everyone is welcome.

What is the magic ingredient that helps you deliver the best service to your customers?

Our people. The magic ingredient is the diverse collection of team members, collaborators, and guests who choose to call the Standard home.

Which is your favourite Standard Hotel property, and why?

It is hard to choose—like picking your favorite child. Even if you have a favorite, you are not allowed to say. I would just say she has a British accent (I am only kidding!).

What's your biggest dream in life?

Besides raising my daughters to be strong, kind, self-reliant, and happy women, I would like to bring the Standard to the best cities in the world and work with our incredible team to create something very special in each city.

What one thing have you not yet done that you really want to do?

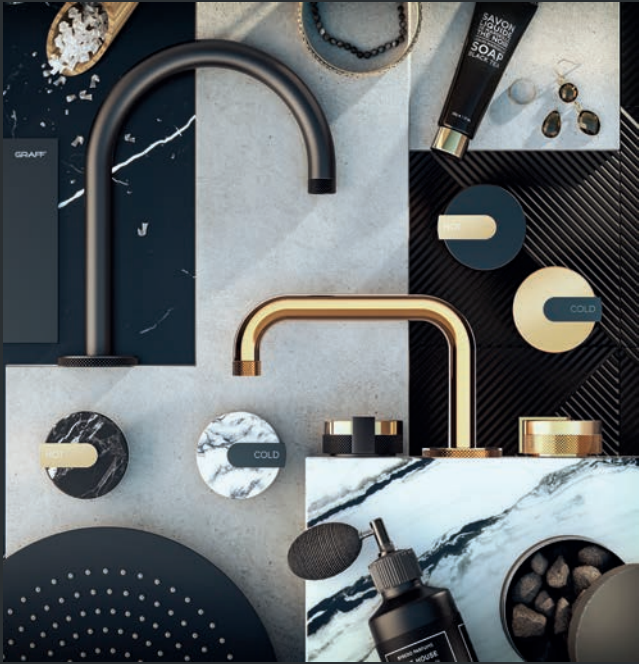
Open a Standard in Paris.

What one word best describes you?

Determined.

NEWH UK chapter board member Can Faik is an award-winning journalist and editorial director of Hospitality Interiors. He is renowned for his far-ranging perspective on the hospitality industry worldwide and as the go-to guy for news, trends, and developments. ■■

GRAFF
Art of Bath



ENDLESS CREATIVITY WITH MOD+ COLLECTION

Scan the QR code to customise your collection with MOD+ configurator

NORTH AMERICA | EUROPE | UK | MIDDLE EAST | ASIA

RICHLoom

CONTRACT



FLORIDASEATING.COM 888.818.4480



HOSPITALITY DESIGN FURNITURE



Batyline® Elios & Soltis® Veozip

Serge Ferrari
group

marketing.us@sergeferrari.com

An Interview with Rachelle Schoessler Lynn, FASID, LEED Fellow, CID Workplace Design & Strategy and Sustainability & Health & Wellbeing



Rachelle Schoessler Lynn

How did you develop your initial interest in sustainable design, wellness, and impact?

I started my career in 1993 and found my first job at LHB in Minneapolis. One of the courses that I took at Iowa State University inspired me to learn more about materials and finishes. I felt like so many materials were not authentic. This was also a time when there was a new Veteran Facility built and was never occupied because of Sick Building Syndrome and other Building Related Illnesses. Together we created a new strategic plan. The office had a mix of disciplines: structural engineers, mechanical engineers, landscape architects, architects, specifiers, and me—the interior designer.



Each discipline had an assignment to learn about how we could change the way we work from a sustainability and health and wellbeing perspective. This led LHB to the American Lung Association. They wanted to build “Health Houses” that focused on asthma and other indoor air quality. We were progressive in the design. We were testing materials that were not known. The focus was on air quality. We designed three Health Houses that were available for tours to the general public.

In what ways has it most influenced your work?

For my entire career I have focused on innovative solutions in the design process. I enjoy working with the engineers and landscape architects to elevate the opportunities that they may not be thinking about. I have a focus on materials. When I was working at LHB we created a material library that prioritized healthy/non-toxic materials. It was a limited palette at that point and we were deciphering MSDS sheets for chemicals. We have come a long way now. Each office I have worked in has been able to create a sustainable, healthy resource library.

You’re speaking at HD Expo + Conference on an NEWH Green Voice session on the AIA Architecture & Design Materials Pledge. Can you sum it up?

The AIA Materials Pledge has been in the works for several years. It started with a letter from the design community to request transparency in the materials designers want to specify from manufacturers. Manufacturers responded and now we have over 100 firms that have signed up for the Materials Pledge.

For more information on NEWH Green Voice, visit newh.org/education





RUGS FURNITURE LIGHTING TEXTILES WALL DECOR SURYA.COM/CONTRACT



ARTERIORSCONTRACT.COM



**LEADING SUPPLIER
OF FABRIC,
VINYL, & LEATHER**

Give our friendly and knowledgeable customer service team a call today at

877-498-3344



According to AIA, 80 percent of architects want to specify more sustainable materials. Is this Pledge moving us in the right direction?



I believe that everyone wants to do the right thing. At this point, firms are looking for transparency in the products that they are specifying. However, not everyone knows what they are looking for. We need that easy button and we need manufacturers to talk about the sustainability and health components of their products. They have a great opportunity to educate the designers and architects on the materials that they are selling.

Some organizations are rewriting their specifications to ensure that products that are being specified are in alignment with the sustainability and health goals. The Materials Pledge is about figuring out how we transform our practice. We need all five pledge statements to be considered. The idea is that at some point projects will be able integrate all five.

What specifics are involved in the Pledge?

This is the what each Pledge statement is about:

- » Support human health by preferring products that support and foster life throughout their life cycles and seek to eliminate the use of hazardous substances;
- » Support social health & equity by preferring products from manufacturers that secure human rights in their own operations and in their supply chains, positively impacting their workers and the communities where they operate;
- » Support ecosystem health by preferring products that support and regenerate the natural air, water, and biological cycles of life through thoughtful supply chain management and restorative company practices;
- » Support climate health by preferring products that reduce carbon emissions and ultimately sequester more carbon than emitted;
- » Support a circular economy by reusing and improving buildings and by designing for resiliency, adaptability, disassembly, and reuse, aspiring to a zero-waste goal for global construction activities. ■■■



HD Expo + Conference

Healthy Materials: Understanding the AIA Materials Pledge

Presented by NEWH Green Voice | DesignWell Pavilion

Wednesday, April 27, 2022

10:30 am – 11:30 am

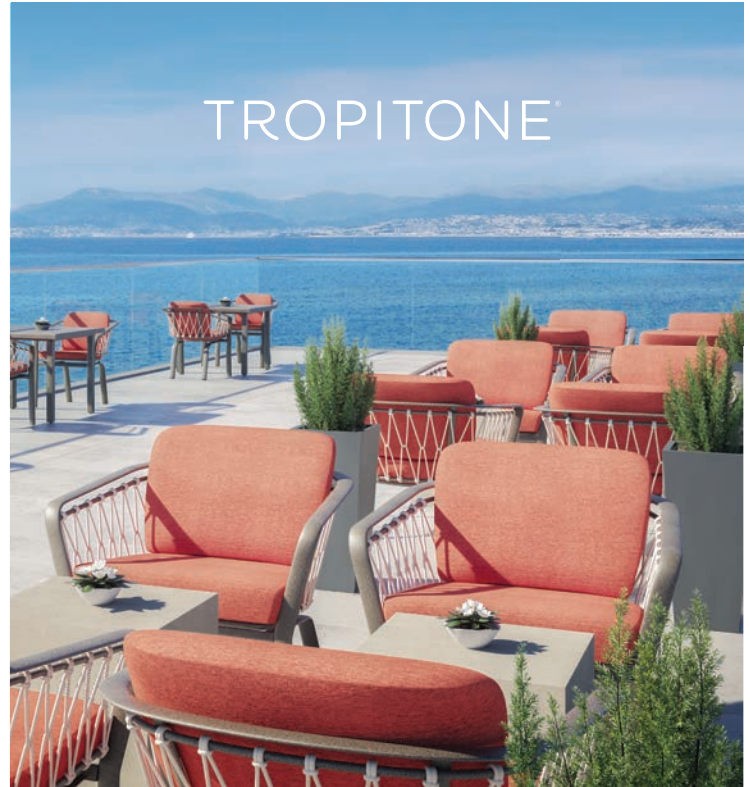
For more information on NEWH Green Voice, visit newh.org/education





ShawContract®
hospitality

Explore *Terra Meta* at shawcontract.com



TRELON ROPE

TROPITONE.COM
sales@tropitone.com



Supply Chain Management

- Project Management
- Logistics
- Installation

Web Based Asset & Quality Control System
Nationwide and Global Warehousing

Your Logistics Solution Provider



FF&E

WAREHOUSING

FREIGHT & ASSET MANAGEMENT

407-425-4400

www.isg.cc

ONE-ON-ONE WITH

Rebecca Bertrand



Steering chair, Vancouver region, and account executive, Milliken

What have you found to be most valuable about your NEWH involvement, both personally and professionally?

The most valuable aspect of being involved in NEWH has been the incredible people that I have met and connections that I have made. The board becomes a little family and we help to support and invest in the hospitality community, and that is very special.

What would surprise people about you?

I'm not sure this is a surprise, but I am a big foodie and I have a foodie Instagram account.

What would people be interested to know about your company?

Milliken has a long tradition of ethical and environmental business practices. For example, our flooring platform is carbon neutral globally.

Where do you find inspiration, both inside and outside the industry?

Inside the industry I find inspiration in the amazing volunteers within our NEWH family that give their time to help others. Outside the industry my inspiration comes from connecting with friends and family and food and travel. Travel is what gives me energy to work hard.

Why do you recommend people get involved with NEWH?

You become part of such a community of incredible professionals and people who are doing good things for others that they don't even know. We help the industry to connect, and we raise money that can be life changing for students. It's an incredible feeling to host a great event or give away money to hard working students who may have not been able to afford their tuition otherwise without going into debt.

What is your proudest recent NEWH accomplishment?

Honestly, getting through COVID the last two years successfully is my proudest recent accomplishment. The NEWH Vancouver region pivoted quickly and hosted a bunch of wonderful virtual events that the community needed at the time and a few incredible outdoor events at the times when we were able. We came together, and we really overcame a lot.

What are you most looking forward to?

Getting back into in-person events, our first annual NEWH golf tournament, and giving hugs to people I haven't seen in ages.

When you aren't working or at an NEWH event, where can we find you?

When I'm not working on NEWH board items, you can find me at soccer, or yoga, or drinking wine with my friends. ■■■



THE
ART
of
ULSTER

HOTEL CRESCENT COURT *by* MURPHY CRAMER DESIGN
PHOTOGRAPH COURTESY OF HOTEL CRESCENT COURT

ulster™
www.ulstercarpets.com

GET TO KNOW

Demi Melissinou



President, Toronto chapter,
and creative lead, Demi
Melissinou Design

What have you found to be most valuable about your NEWH involvement, both personally and professionally?

When I arrived in Canada seven years ago I knew no one. I had established myself in Europe and had done projects all around Europe and the Middle East but here in North America I had no connections whatsoever. NEWH gave me my new network of people on the other side of the ocean. Through NEWH I found the people I could depend on to bring my projects to life. And, as it happens every so often with people one works with, a lot of my connections are now dear friends too.

What would people be interested to know about your company?

We work on both residential and hospitality projects, and we have projects in both North America and Europe.

Where do you find inspiration, both inside and outside the industry?

Through both traveling and exploring new building materials. I keep a record of all materials that have provoked my curiosity throughout the years and when the opportunity arises they play an instrumental role in the design concept of a project.

Why do you recommend people get involved with NEWH?

From a designer's perspective, NEWH gives you a platform of material sourcing that is fantastic. You don't research materials blindly; you actually contact people that you've met in-person at an NEWH event and they go out of their way to source what you need and help you bring a project into completion. I see NEWH as an extension of my "work" family. Of course there are so many other reasons. The scholarship funding that so many students get and is life changing, the NEWH Leadership Conference which happens every two years and is all about your inner self growth, connecting with other colleagues—I can go on all day!

What is your proudest recent NEWH accomplishment?

It's not an accomplishment quite yet but my goal is to lure in as many interior design students as possible, and, in the long run change the demographics of our chapter. I want to show design students the value of NEWH while they are still in school. If we can engage students now and help them transition to the working industry, they will become invaluable NEWH members. We've started portfolio review sessions with one design school already and set up sessions with another two. Our aim is to eventually run these series annually. Also this year our TopID Awards event will be combined with our scholarship awards event so, fingers crossed, in 2022 we'll have an even larger draw of students than what we had last year. ■■■

Custom • Suite • Guestroom • Public Space



Bar Table, Dresser, TV Console, Bed, Nightstands, Vanity
W Philadelphia, Philadelphia, PA

Designer: designstudio ltd Photo: Eric Laignel Photography



MANDY LI
COLLECTION



A Mandy Li Collection Company

f t in | MandyLiCollection.com | 877.497.8663



FURNITURE

We can make that.



765.683.1971
sales@tlsbydesign.com



Architex

Authentec® Couture

Disinfectable French-grain Vegan Leather

For more information, visit architex-ljh.com.

GABRIELLA WHITE BRANDS: SUMMER CLASSICS & GABBY



CONTRACT SOLUTIONS FOR EXTERIOR & INTERIOR SPACES

hospitality • multi family • senior living • country clubs



SummerClassicsContract.com/NEWH

MEET

Adam Tooter



NEWH, Inc. Ambassador and
East Coast Sales Manager,
P/Kaufmann Contract

What have you found to be most valuable about your NEWH involvement, both personally and professionally?

It is such a pleasure to give back to the hospitality community that gives us so much, and NEWH offers so many ways to contribute. On a personal note: As a herd animal who has missed the social aspect of my job these past two years, the most valuable part of my involvement in NEWH is being part of a lively, inclusive, and growing design-driven group of people. I have worked in other industries and it's just not as much fun!

What would surprise people about you?

My 50 by 50 Project! I am currently stuck at 46 states with a goal of visiting them all by the time I turn 50. Clients in North Dakota, New Mexico, Missouri, and Oregon—please help me out! What won't surprise you: I fell for a COVID puppy, and now we have two.

What would people be interested to know about your company?

Prints are back and no one does them better. The design possibilities, the colors, the price point—and maybe most important right now: the logistics. With rapid production on our extensive base cloth inventory, we can get orders out the door fast to help you meet your project deadlines.

Where do you find inspiration, both inside and outside the industry?

There is no better source of inspiration for me than the beauty around me—both in nature and in the group of people I am lucky enough to have in my life.

Why do you recommend people get involved with NEWH?

Working with NEWH has broadened my perspectives both personally and professionally. It is so satisfying to feel part of a larger community—something greater than the daily to-do list.

What is your proudest recent NEWH accomplishment?

Being asked to join the Board as a Brand Ambassador.

What are you most looking forward to?

A full calendar of events, meetings, and some overdue leisure travel—and, of course, sending the kids to camp!

When you aren't working or at an NEWH event, where can we find you?

When I am not working, you cannot find me! Work hard, play hard, recover hard! ■■■

Hospitality is getting back to business. Are you?

As a supporter member of NEWH
Please use promo code NEWH22 for your
complimentary Expo Only pass

More products.
More networking.
More inspiration.
All live and in person.

Register in less than two minutes
by scanning the QR code or
visit hdexpo.com



hd expo+
conference

april 26th-28th, 2022 + mandalay bay + las vegas + hdexpo.com

Forward Motion

Signature's evolution elevates the brand for its customers

By Alia Akkam

Photography by @sans.murs, Skyline Studio and Lockner Creative, and courtesy of Signature

Hospitality has always been at the core of family-owned Signature Flooring, evident from its launch in 1998 as Signature Hospitality Carpets. Since then, Signature, which offers a robust custom design-driven portfolio of broadloom carpet, carpet tiles, rugs, and LVT, has maintained its “legacy of innovation, growth, and community,” says Bobby Berrier, president and CEO. “As we moved through the years, the market shifted. It’s been an evolution for us to meet the needs of our clients as a full-service provider.”

Berrier joined Signature in 2017 but, along with several of his fellow new-to-the-company colleagues in leadership roles, he has been entrenched in the commercial flooring industry for years, exhibiting a distinct blend of expertise and fresh insights. 2018 was a pivotal turning point for Signature. Acknowledging that there was a disconnect between Signature Hospitality Carpets and Signature Accord, the senior living arm, the brand embarked on a voyage of rediscovery—and ultimately a rebranding. “Where was Signature going, what was the future,” recalls marketing director Angie Law. “We anticipated new products coming into play and we wanted to become a total solution. We wanted to elevate the brand and give it a more modern look, design, and feel.”



Hospitality and senior living projects remain the bulk of Signature Flooring’s business, but James Coker, vice president of strategic business development, points out that “as our product offering has become more diverse, our sales team has been pulled in different directions, working in areas like retail now. We are being taken out of our comfort zone which is good.”

Signature’s 24-year-deep hospitality roots are magnified by collaborations with brands like Choice Hotels, G6 Hospitality, Hilton, Hyatt, Marriott (Signature products are slated to appear in the forthcoming Moxy Hotel

in Charleston, South Carolina) MGM, Wyndham, and Wynn, as well as independent boutique properties including the Wylie Hotel in Atlanta. “We have a breadth of capabilities,” Berrier says.

Coker notes that “our brand relationships are strategic and important to us” but so is working directly with designers and streamlining the creative process for them. In 2020, for instance, Signature unveiled Signature Spark, a one-stop interactive design tool that lets designers customize Signature patterns, create tackboards, and place orders.

This site is buoyed by access to a “talented internal team that can assist with planning and estimation and project management,” says Berrier. “We provide a concierge level of service when it comes to designers and engage them early on to fulfill their product needs.” Recognizing how valuable a designer’s time is, Beth James, hospitality product design and development manager, believes it is paramount to “give them an advantage to working with Signature, to get them where they need to be as quickly as possible. We work hard to make it easy for them.”

Loyal customer service coupled with pioneering tech advances is certainly an attractive combination. Consider flexible ColorPoint Technology, which encourages designers to use up to six hues while “advancing the construction of the carpet with accurate and precise designs. We currently have more ColorPoint capacity than our competition,” says Berrier.

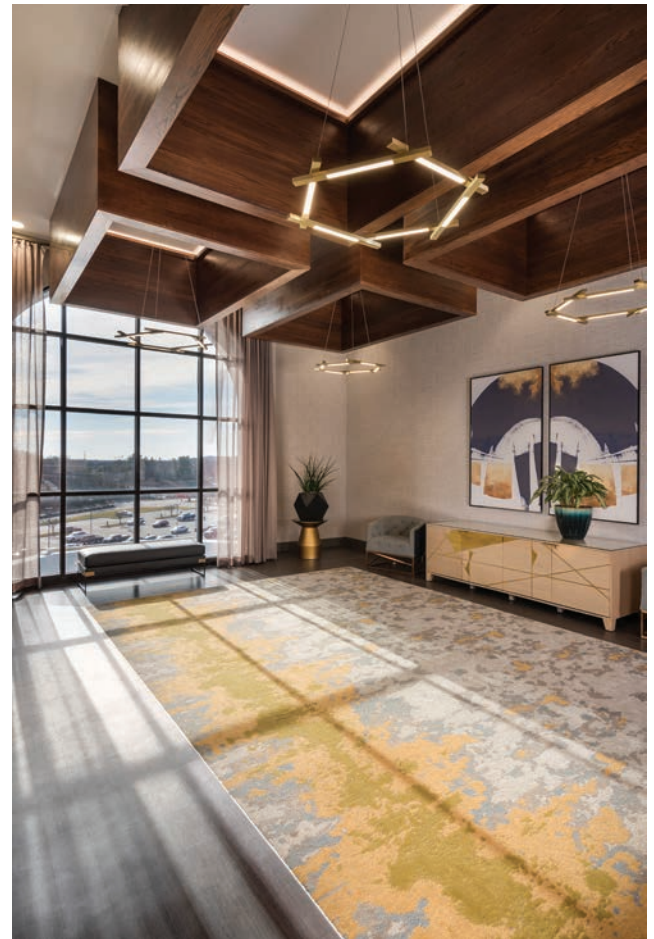
Likewise, when Signature observed hotels’ affinity for instilling warm, residential vibes, “we were first to put assets on the ground moving to hard surfaces,” adds Berrier, noting the presence of the company’s LVT production facility in Chatsworth, Georgia.

Signature’s LVT products contain pre-consumer materials, waste generated from trimmings that are added back in and exemplify its sustainability mission. This is further showcased by BioCel cushions and laminates “that promote long-term usage,” says Coker. Law elaborates that “we are replacing petroleum-based materials with renewable bio-based ones coming from U.S. soybean farmers, so it’s farm-to-floor.”

Among Signature’s newest product releases is a duo of custom broadloom and carpet tile collections. Emerge melds botanical motifs with the intricate details of butterfly wings, while Outbound draws from the shapes of storage containers, plastic bags, glass bottles, and wire baskets. “They are two very different but well-coordinated packages that will take you from the guestrooms to the corridors to the public spaces,” explains James.

This page, clockwise from top:

Vivid Expressions, a loose lay LVT, with bevel accent carpet tile; custom broadloom at the Crowne Plaza in Warwick, Rhode Island, designed by Judd Brown Designs; the formal dining room at the TPC Colorado Clubhouse in Berthoud, Colorado, designed by Collab Architecture and Springhaus; custom broadloom carpet at the Kimpton Marlowe Hotel in Cambridge, Massachusetts, designed by KKAD



There is also the nine-colorway Journey collection, anchored by a textural chevron pattern that elicits a flow of movement, and the budget- and time-sensitive SignatureNOW. Delivered in four weeks or less, SignatureNOW's Local Style range will soon be followed up by the clean-lined Modern Style.

"We care about every order that comes through," explains James. Adds Berrier. "We don't know what the possibilities hold for us as a leading vertically integrated flooring manufacturer, but what hasn't changed is our priority of clients and customers." ■■



Opposite page: Signature's Outbound collection features dimensional shapes inspired by the shapes found in storage containers, plastic bags, glass bottles, and wire baskets

Island Magic

Michael Thomas & Co. envisions a subtly luxurious retreat

By Alia Akkam

Photography by Nicole Canegata

Initially, Michael Kramer, founder of New York studio Michael Thomas & Co., envisioned Lovango Resort + Beach Club as a modern architectural showstopper with sprawling guestrooms and huge glass doors, “a dramatic presence for all approaching boats that would declare itself to passengers,” he recalls.

But the idea was quickly scrapped after Kramer visited the private island in the U.S. Virgin Islands where Lovango is situated. Overlooking Caneel Bay, minutes from St. John and St. Thomas, it “was so breathtaking and serene that I asked the captain to stop the boat so we could take in the view. I knew we had to preserve that at all costs,” adds Kramer.

Lovango is part of Mark and Gwenn Snider’s Little Gem Resorts collection, sibling to Nantucket Hotel & Resort and Winnetu Oceanside Resort, both in

Massachusetts. “We knew we didn’t want to bulldoze and overbuild,” explains Kramer, noting how the eco-driven property, understated yet luxurious, allows guests “to explore the island and find beauty in everything.”

Comprising treehouses, poolside villas, and glamping tents, Lovango respects the bird sanctuary across the bay, shunning large white formations for wooden ones that are “almost invisible from the water,” as Kramer puts it. “I like to think the birds are happy they can still look at lush jungle.”

In consideration of the harsh environment, Michael Thomas & Co. opted for durable materials that would gorgeously weather. Indigenous stone, characterful salvaged doors, and pathways lined with rope netting—which doubles as a trellis—are complemented by sun-bleached Caribbean hues.





This page: Abundant wood and bleached hues characterize a Treehouse deck at Lovango.

Opposite page: The property's glamping tents feature stunning water views.

Continued on p. 74)))



To “help the resort have a fighting chance against a Category 5 hurricane,” explains Kramer, he and his team designed built-in furniture, including sofas and nightstands, that can withstand fierce wind and rain. During storm season, screens in the treehouse, for example, roll up, and all of the freestanding items fit perfectly in the bathroom, essentially a 16-inch-thick concrete bunker, while wind blows freely through roof openings.

Leaving the surrounding foliage and wildlife intact was vital, so “we strategically placed each treehouse and structure to lessen the impact on the environment and built outdoor showers that are shaded by large tree canopies,” says Kramer. “It really is a magical experience.”

This page: An alcove on a Treehouse deck includes a built-in daybed; outdoor showers are shaded by trees; the resort’s wooden structures are designed to blend into the surrounds.





This page: A serene guestroom in one of the Treehouses; accessible by private boat or ferry, the quaint Lovango Village is home to shopping and dining options for guests.

OWNERS

Mark and Gwenn Snider

MANAGEMENT COMPANY

Little Gem Resorts

ARCHITECTURE AND INTERIOR DESIGN FIRM

Michael Thomas & Co.

CONTRACTOR

Stanmar Inc.

PURCHASING

Michael Thomas & Co.

BED THROW AND SCARF OR BEDCOVER

Frette and Matouk

CASEGOODS AND FURNITURE

Furniture Design Studios and Harbor Outdoor

CHAIRS

Sika Designs, Cane-line, Phillips Collection, and JANUS Et Cie

FABRICS

Kravet, Romo, Erica Shamrock Textiles, and Zimmer + Rohde

FLOOR TILE

Roca and TileBar

LIGHTING

Arteriors, Visual Comfort, and Palecek

TABLES

Harbor Outdoor, Westminster Teak, and Palecek

TUB AND SINK/FIXTURES

Kohler and Jaclo

WALL TILE

TileBar, Roca, and vintage native tile



michaelthomasandco.com; lovangovi.com

Comfort Zone

Aria Group channels Scandinavian heritage in Sister Bay, Wisconsin

By Alia Akkam

Photography by Ballogg Photography

Swayed by the familiar landscape and architecture, a large contingent of Swedes, Danes, and Norwegians settled in the upper Midwest in the 1800s. One location that resonated with these immigrants in particular was Door County, Wisconsin, a 70-mile-long peninsula exalted by views of Lake Michigan and Green Bay. It is this rich, more than 200-year-old Scandinavian heritage that gave rise to the Dörr Hotel, a contemporary 47-room hotel on Sister Bay that exemplifies the alluringly comforting spirit of hygge.

For Oak Park, Illinois-based Aria Group, a Nordic sensibility was key to the waterfront property's personality, translating to an abundance of natural materials, "especially pale woods, wool and linen textiles, and leather," explains senior designer Trina Alsip. "Its focus is on earthy tones, simple lines, and

rhythmic textures; a clean approach that beautifully combines functionality and craftsmanship." Guestrooms, for example, are minimally adorned with the likes of twill and custom white oak furniture.

Entering the Dörr's lobby, one is immediately struck by the two-story Venetian plaster fireplace framed by stacks of wood logs. Its "mystical yet warm and inviting elegance provides a perfect place for guests to cozy up to for some tranquility or to congregate among friends," says Alsip, noting how the centerpiece "contrasts with the linear white shiplap walls and plank flooring underfoot." The adjacent bar, topped with faux marble, is accented by aged brass and dark gray herringbone tile.





This page: The faux-marble bar is accented with brass and herringbone tile; serene guestrooms overlooking the bay include custom white oak furnishings; graphic wallcoverings have been created from images by a local photographer.

Opposite page: Blue and green hues found in the Dorr's public spaces nod to the surrounding water and forests.



Continued on p. 78)))

Aria Group wanted to create a relaxing and timeless retreat, but the firm was also keen for hotel visitors to celebrate the region. So “we took inspiration around us and infused it into the interior architecture and design,” Alsip points out, noting how the graphic wallcoverings in the main and lower lobbies comprise panoramic tone-on-tone images of Cave Point County Park, a half hour away, that were shot by a photographer from the area.

Just as the Venetian plaster echoes the wet sand of the bays, bursts of marine blue and mossy green were also pulled into cabinetry, area rugs, seating, and accessories throughout the Dörr “to relate to the surrounding forests and shoreline,” adds Alsip. “The styling intention is to locally source artists and craftspeople so it is ever-changing, like the four seasons.”



This page: Graphic carpeting lines the corridors; the double-height lobby's dramatic Venetian plaster fireplace is lined with stacks of logs.





Above: The Dörr suite includes a generous seating area with a fireplace, epitomizing the hotel's spirit of hygge.

OWNER

Chris Schmeltz

MANAGEMENT COMPANY

Jaco Management

ARCHITECTURE AND INTERIOR DESIGN FIRM

Aria Group

CONTRACTOR

Bayland Buildings

PURCHASING FIRM

Benjamin West

CARPET

Shaw

CASEGOODS AND FURNITURE

Klem Hospitality, CTI, Wells Industries, DesignForm, and Restoration Hardware

CHAIRS

Lily Jack, West Elm, UHS, DesignForm, Stellar Works, and Made Good

DRAPERY

Koroseal and Lebatex

FABRICS

Pollack, Joseph Noble, Arc Com, Innovations, Carnegie, Maharam, Erica Shamrock, Crest Leather, KB Contract, Appian Textiles, Lebatex, and Momentum

FLOOR TILE

Ceramic Technics and Stone Source

LIGHTING

Challenger Lighting, Hudson Valley, Restoration Hardware, Rejuvenation, Schoolhouse, Tech Lighting, and Shades of Light

TABLES

West Elm and Industry West

TUBS AND SINK/FIXTURES

Grabinski Group/Belstone and Kohler

WALL TILE

Belstone, Ceramic Technics, TileBar, Dekton, and Elm Surfaces

WALLCOVERING

MDC, Visual Impact Media, and Momentum

Good Eats

Studio Partnership brings a community vision to life

By Alia Akkam

Photography by Karl Connolly

Back in 1982, two volunteers launched Paul's Place as a twice-weekly soup kitchen catering to in-need residents of southwest Baltimore's Washington Village/Pigtown neighborhood. Over these last four decades, Paul's Place has expanded its mission, introducing numerous empowerment and support services and health and wellness programs to low-income individuals and families.

One of the nonprofit's most ambitious endeavors is Groundwork Kitchen, a full-service restaurant that provides free, hands-on

culinary training for those seeking career skills in the hospitality realm. Along with the chef's table, takeout zone, and primary and private dining rooms on the main and upper floors, there are educational and administrative facilities on the lower level. Sparks, Maryland-based Studio Partnership treated these components with equal care, "fostering an environment for employees and students to thrive," says design project manager Natalie Romano. These areas are tied to the restaurant through "the design and placement of graphics and finishes."





This page: Groundwork Kitchen's communal tables, featuring butcher block tops, epitomize the restaurant's community vision.

Opposite page: Two-story windows flood the main dining area with light.

Studio Partnership's vision for Groundwork Kitchen was first shaped by looking at old photographs of Edwardian kitchens, as well as markets and butcher shops in Pigtown and across the city and then translating that imagery into something contemporary and functional. "Historically, these types of spaces were often a bit crowded and every square inch was used. We wanted to keep it open and light-filled to take full advantage of the two-story windows," explains Romano.

Those vintage snapshots revealed plenty of dark wood, marble, and brick. Studio Partnership layered in these elements, balancing durability with easy-to-swap softer pieces. In fact, one of the challenges, notes Romano, was "incorporating materials that appear to have a patina but are actually brand new, high performing, and hygienic. We worked with product manufacturers that were able to custom create the look we wanted." The sculpture fashioned out of hanging copper pots, the mezzanine's "metal" wall, and the butcher block tabletops are all examples.

Groundwork Kitchen is ultimately an expression of community best reflected, says Romano, by the refectory-style communal tables that offer a view onto the kitchen: "We placed them front and center to encourage diners to sit together. They showcase everything Groundwork Kitchen is about and do it beautifully."

Continued on p.82)))



Above: Crisp blue and white hues mark the takeout area.

Left: A striking copper-pot sculpture presides over the dining room.





Above: Balcony seating overlooks the main dining area.

OWNER AND MANAGEMENT COMPANY
Paul's Place

ARCHITECTURE AND INTERIOR DESIGN FIRM
Alexander Design Studio and Studio Partnership

INTERIOR DESIGN PROJECT TEAM
Karin Harrington, Leanne White, Mical Coon, and
Lauren Christel

CONTRACTOR
The Whiting-Turner Contracting Company

CONSULTANT
Cap Ex

PURCHASING
Studio Partnership

ARTWORK
Studio Elements and Total Image Graphics

CARPET
Tarkett and Bentley

CASEGOODS AND FURNITURE
Tillette's Cabinets Plus and Source Hospitality

CHAIRS
Amisco

FLOOR TILE
Architessa, Ceramic Technics, Conestoga, and TileBar

LIGHTING
Renaissance Lighting and Y Lighting

TABLES
Source Hospitality

SINK/FIXTURES
Bobrick

WALL TILE
Architessa and TileBar

WALLCOVERING
Wolf Gordon

studiopartnership.net; groundworkkitchen.com

On Tour

Historic elements meet contemporary touches in a Studio Marco Piva-designed hotel restoration

By Alia Akkam

Photography by Andrea Martiradonna

At the 89-room Radisson Collection Hotel, Palazzo Touring Club Milan, there remain myriad glimpses into the building's past as the headquarters of Italy's major national tourist organization. Completed in 1915 as Palazzo Bertarelli, it features Rosa Baveno marble columns, wrought-iron works sculpted by Art Nouveau-era craftsman Alessandro Mazzucotelli, and arresting entrance gates. Along with the façade and main staircase, these are some of the 20th-century decorative elements that were carefully restored by local practice Studio Marco Piva.

During this process of discovery, says founder Marco Piva, "close-up details of great expressive richness and high artistic value," were revealed, leading to a design that ultimately merges the historic with the contemporary. The "monumental edifice," as Piva describes the palazzo, was once a touchstone of the Milanese lifestyle, and the studio's goal was to revive it as a new tourism-fueled destination for the city.

A direct nod to the Touring Club Italiano's roots is the library, packed with old guides and atlases, that stretches across the ground floor and mezzanine.





This page: Marble columns and wrought-iron accents meld in the lobby; warm and cool tones characterize the Presidential suite's living room.

Opposite page: The Palazzo Touring Club Milan is housed in a restored circa-1915 building once home to Italy's national tourism organization.

Continued on p. 86)))



This page: The hotel's library features custom bookcases with backlit burnished brass; leather headboards recall train carriage seating; the building's dramatic main staircase was part of the renovation.



“Custom bookcases are made of wood with backlit burnished brass shelves and inserts, with a particular rounded shape that always recalls the movement and the wheels of the bicycle,” explains Piva, noting how an Italian flag, backdropped by bicycle spokes, is the Touring Club Italiano logo. “Warm materials are in contrast with colder ones to create a focus point on publications, making the place look more like a boutique than a bookstore.”

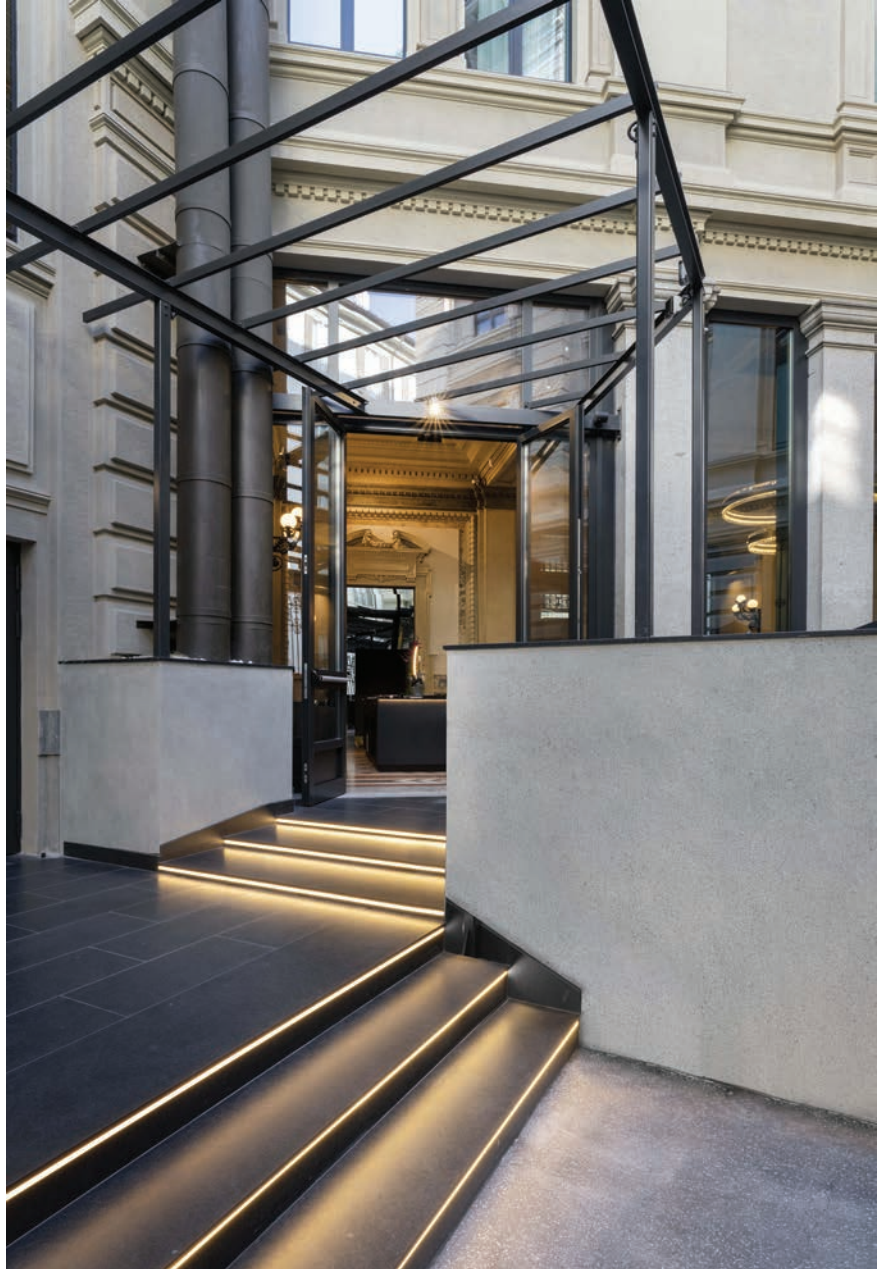
This nostalgic circular form is also embraced on the stair balustrade and glass and metal light fixtures. The overall notion of voyage is subtly expressed in other details, like the leather headboards that reference train carriage seating, and furniture (most of the pieces found throughout the property were designed by Studio Marco Piva) that call to mind vintage travel trunks.

Previously, Touring Club Italiano did not take advantage of the building's top floor but the studio has now transformed it into 13 guestrooms, “characterized by the original exposed beams of the attic,” points out Piva, that are “each different from the other, with a very particular configuration, that we call lofts.” Here, a space-optimizing mezzanine level offers views to the outside and, adds Piva, “various visual perspectives.”





This page: The notion of old and new is on display in Bistrot Bertarelli 1894 Milano restaurant and in the hotel's internal courtyard.



MANAGEMENT COMPANY
Igefi S.r.l. Radisson Hotels

ARCHITECTURE AND INTERIOR DESIGN FIRM
Studio Marco Piva

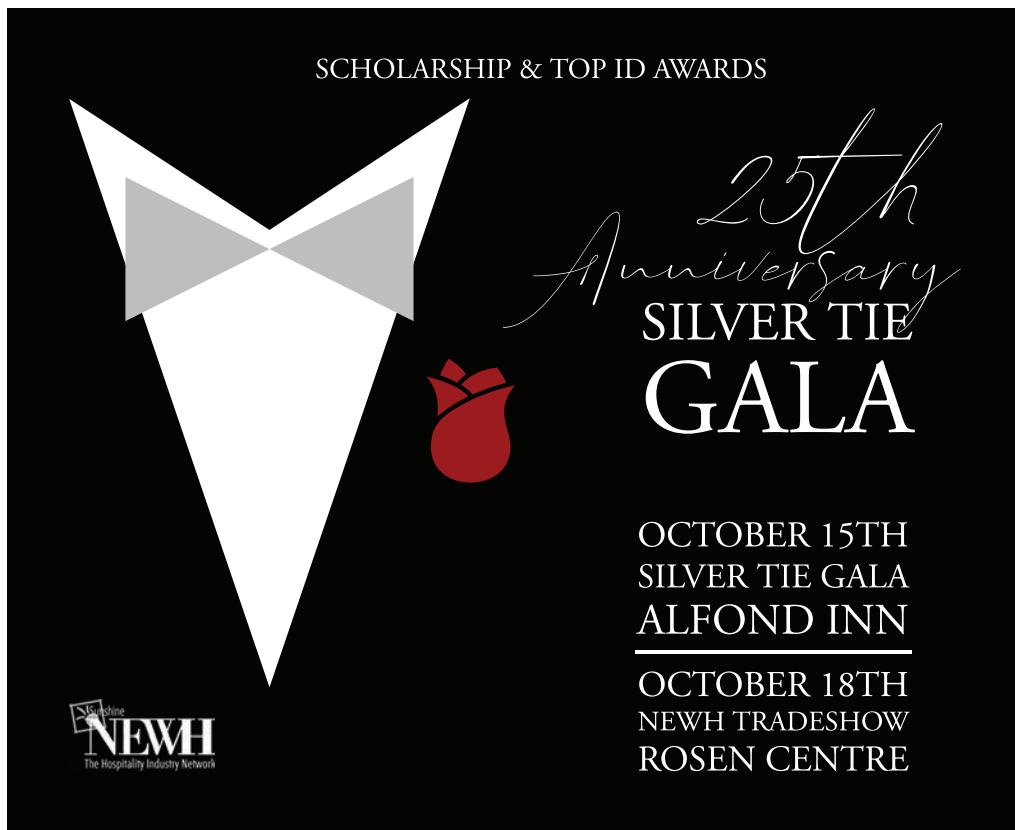
CONSTRUCTION
Di Vincenzo Dino & C S.p.A.

EXECUTIVE DESIGN AND CONSTRUCTION MANAGEMENT
CSA, Studio di Architettura e Urbanistica Corrado Serafini

CONSULTANTS
Studio Michaelides Associati Ingegneria e Architettura (structures), ESA Engineering S.r.l. (MEP), and Coobec (restoration)

studiomarcopiva.com; radissonhotels.com

Sunshine



Paris

The Mayaro Gallery received NEWH Paris chapter members for a private visit of the exhibition *Plancton, twenty thousand leagues under the air* in the presence of the artist Jerome Gelès.

Gelès explores an imaginary marine world: Floating sculptures taking the form of beings populating the seabed and endangered by human activity.

Equip Hotel Paris and NEWH Paris recorded the first episode of the “Eh Talks” series, “How to Create a Hotel Brand with a Strong DNA,” a partnership between the chapter and hospitality tradeshow EquipHotel Paris. The chapter will be present at the EquipHotel exhibition which is the leading international exhibition for professionals in the hospitality sector. Come and visit NEWH Paris from November 6-10th, 2022 at EquipHotel at Paris Expo Porte de Versailles.



- 1.** Béatrice Gravier, EquipHotel; Gaelle Vial Paquet, Louvre Hotel Group; Alex Toledano, Vista Art; Federico Tresi, Accor; Gwendoline Theodet, Campbell House; Ngahua Damerell, Accor; and Oytun Saritayli, EquipHotel
- 2.** Lina Ettaik, Red Edition; Sarah Noon, Campbell House; Lorna Meva Raza, Wells International; and artist Jerome Gelès at the Mayaro Gallery private visit
- 3.** Sarah Noon, Campbell House; Lina Ettaik, Red Edition; Eloise Gilles, Mayaro Gallery; Tiphaine Quiban, student at Ensaama Paris; Gwendoline Theodet, Campbell House; and Leslie-Ann Bontemps, lawyer, at Mayaro Gallery
- 4.** Gett Wild, Wild International Lighting Design; Laurie Bonin, Artpoint; and Tiphaine Cogez Cousseau, Brume Orpin



New York
NEWH
The Hospitality Industry Network

Join us for a Carnival Fundraiser
June 2022

New York

The chapter found it so exciting, impactful, and inspiring to attend the NEWH Leadership Conference in Seattle and have an opportunity to collaborate and celebrate one another. Members found it thrilling to meet the scholarship winners and chat with them about their future and it was wonderful to spend time connecting with peers and enjoying all the conference sessions.



1. Michaella Nermer, NYSID; Kristy Bohne, KB Hospitality; Lissette Wispe, Stellar Works; Levar Jackson, Visual Renaissance; Matt Waas, TileBar; Laura Carter, gmansales; Erica Puccio, Tile Bar; Josh Kennett, Royal Thai; and Evelyn Liu, NYSID



2. Erica Puccio, Tile Bar; Levar Jackson, Visual Renaissance; and Lissette Wispe, Stellar Works

CHAPTER HIGHLIGHTS

Cincinnati Region

The region celebrated the holiday season and announced new steering committee leaders at its recent Holiday Gala. The team looks forward to many scheduled events and networking over the next two years!

1. Previous steering chair Bimal Patel, Rolling Hills Hospitality; treasurer and social media chair Sam Ferguson, BC Lights; 2022 steering chair Kyler Burroughs, Artonomy; membership chair Danielle Monhollon, Standard Textile; programming chair Amanda Searfoss, Luminaut; membership co-chair Kristin Owens Hain, Standard Textile; fundraising chair Maddie Baker, Luminaut; executive advisor Kelly Gaddes, Design Shop Interiors; scholarship co-chair Jennifer Hartig, Rolling Hills Hospitality; and scholarship chair Jayne Menke, Artonomy. Not pictured: secretary Keisha Byrd, Boutique Design/Hospitality Design



Atlantic City-Philadelphia Region

Striking Out for Scholarship was the region's first in-person event of 2022, where happily the community of architects, designers, finishes representatives, and students came together to support our student members. The event celebrated the region's 2021 scholarship winner, Grace Schuler, a high-achieving student in Drexel University's Hospitality Management program.



1. Amy McGee, Bentley Mills; Erica Harmelin, APOP Design; Sloane Hosten, Shaw Contract Hospitality; Jason Levy, Jason Levy & Associates, LLC; Carrie Love, Hellyer Lewis Smith, Inc.; Megan Shaughnessy, Kershner Office Furniture; Andrea Abrams, Gary F. Gardner Inc.; Mizuki Davis, Darroff Design; and Ariana Butera, Tantillo Architecture

2. Amy McGee, Bentley Mills, and Brianna Nastasi, McGrory Glass

3. Andrea Abrams, Gary F. Gardner Inc.; and Grace Schuler, Drexel University

4. Kate Bormann and Jennifer Sandora, Drexel University

Las Vegas

Chapter members enjoyed a wonderful night at Resorts World, the newest property to hit the Las Vegas Strip. Members celebrated the work of the 2021 board of directors and installed the 2022 board and chairman, and enjoyed dinner, drinks, and a peek behind the curtain with a panel session with some of interior design and construction members. Following were guided tours of Zouk Nightclub and Ayu Dayclub, the suites, villas, and Awana Spa. It was a strong kickoff to the year and great company!



1. The 2021 board of directors: president Edgar Gutierrez (onstage), Dawn Garner, Kris Hanson, Jonathan Kaler, Sheryl Pellegrino, Michelle Goertz, and MaryAnn Strandberg



2. The 2022 board of directors: president Jonathan Kaler (onstage), Emelyn Altman, Kayla Auyong, Michelle Goertz, Darlene Connors, Sheryl Pellegrino, Kris Hanson, Wanda Luna, Dawn Garner, Katie Novelen, Edgar Gutierrez, Hope Case, and Christy Adams

Mid-South Region

NEWH Mid-South was pleased to have some of its regional interior design students attend the NEWH Leadership Conference with a couple of its board members. Here is their experience in their own words:

Hope Weaver, Middle Tennessee State University:

"This leadership conference was my first NEWH event, and I was welcomed with nothing but open arms. Everyone I met was super kind and helpful. I found all the breakout sessions insightful and loved the ability to choose between several options. I can't wait for the next one!"

Makayla Morrical, Middle Tennessee State University:

"Attending the NEWH Leadership Conference as an interior design student was by far the best networking experience. There was networking, learning, and fun experiences like the Product Showcase, keynotes, breakout sessions, and cocktail parties. I got a lot of valuable information from all the events but the top thing that stuck with me and has helped me as a student and with my future is Chase Jarvis' keynote. Chase talked about IDEA, which stands for Imagine, Design, Execute, and Amplify. He also talked about creativity and how life is not about finding success but creating it. I have always been interested in interior design and wanted to go into hospitality design but I noticed I was falling in love with fabric, furniture, lighting, and so much more which led to being interested in being a rep. The Product Showcase really helped me understand my love for being a rep and meeting so many people that are professionally doing it already. I also got to learn about all the products and materials out there that I could go into. I am so thankful for NEWH and cannot wait to grow professionally and in the NEWH organization."



1. Makayla Morrical, MTSU; Courtney Crosby, Hilton AD&C; Ron Smith and Tracy Smith, Ashley Lighting; Crystal McCain, HBG Design; Dakota Sokoloski, MTSU; Michael Sautner, Atlas Concorde Inc.; Susan Herring, Scott Fabrics; and Hope Weaver, MTSU

2. MTSU interior design students Makayla Morrical, Dakota Sokoloski, and Hope Weaver

CHAPTER HIGHLIGHTS

Rocky Mountain

The NEWH Rocky Mountain chapter celebrates its 2022 Top ID winners

Johnson Nathan Strohe (JNS)

Downtown Denver Sheraton Hotel
Photography by David Lauer

This extensive lobby renovation includes a comprehensive revision of the public space of the largest hotel in the downtown core, including: improved connection between two separate portions of the hotel; engagement with the street through the addition of glazing and access; extension of daylight from the exterior to spaces inset deeply from the entry; and introducing new elements of the brand into the space. The design concept is guided by the history of the building itself, its impact within the city, and the time during which it was originally conceived by I.M. Pei Architects in 1958. This was a time of unprecedented travel and exploration for both business and pleasure. Capturing the spirit of the traveler is at the core of the concept. The late 1950s belonged to the Beat Generation. The renewed design is inspired by their carefree attitude and desire to find a community on the road, to relish in discovery and adventure, and to share that experience.

Kimberly Timmons Interiors (KTI)

Shea Canyons The Exchange Coffee House + Information Center
Photography by Eric Lucero

This one-of-a-kind Coffee House + Information Center at the Canyons in Castle Pines, Colorado is an inviting space for both residents and the public, centered around coffee, conversation, and community connection. A central gathering spot where you can enjoy a handcrafted latte in the morning or a light snack in the afternoon. Guests can settle into a comfy armchair by the fireplace or enjoy the fresh air and firepit on the outdoor patio. The building embraces its natural surroundings and embodies a unique take on modern farmhouse architecture with high scissor truss ceilings that continue out onto the outdoor covered patio, and a retractable door system providing an indoor-outdoor connection between the spaces. The design approach utilized clean lines and a modern color palette that showcases all the characteristics of the community's brand: a spa-like feel, simple, elegant. Comfortable, yet with a buzz of positive energy.

HBC Design Group

The Roadrunner on McDowell

The Roadrunner on McDowell is a midcentury modern-inspired apartment complex in Scottsdale, Arizona. This property features a fitness center and pool area, roof deck, pet spa, and several unique lounge areas. The Roadrunner pays high attention to detail and was such a unique property for the team to design. It allowed us to really push the bar and use some special materials. We are very proud to have this one in our portfolio.



1. The Club Lounge at the Downtown Denver Sheraton
2. The central hub of the newly renovated lobby is the Commons Coffee Bar which transitions seamlessly from day to evening.
3. A warm, welcoming open-concept coffee bar
4. Intimate seating area with outdoor connectivity
5. A warm and welcoming open-concept coffee bar at Roadrunner by HBC Design Group
6. Roadrunner exterior

Rocky Mountain

The chapter held its first-annual Under the Stars TopID/Scholarship Award Gala last September at Space Gallery in Denver, its first formal event. Alan Benjamin of Benjamin West was the special guest, presenting an in-depth State of the Industry presentation covering topics from pipeline issues to an optimistic outlook on the next few years. Members stepped out in their best formal attire and really celebrated the chapter's TopID firms: HBC Design Group, JNS, and Shalls Design Studio, and its scholarship winners Meghan Jackson, Natalie Stotz, and Victoria Smikowski. The event raised \$8,000 for the chapter's scholarship fund this year. Thanks to the incredible sponsors for the event.

- 1.** The 2021 Rocky Mountain chapter TopID Gala
- 2.** From 2021 TopID award recipient JNS: Blaire Weiser and Tobias Strohe JNS; and Ashley Larrick Fangman NEWH Rocky Mountain programming co-chair
- 3.** From TopID awards recipient HBC Design Group: Erin Rurup, Katy Byrne, Jessica Goss, Holly Bolser, and Cynthia Cohen
- 4.** Speaker Alan Benjamin of Benjamin West at the TopID Gala

- 5.** Sara Shalls and Crystal Nodsle, Shalls Design Studio
- 6.** Danielle Vassallo, JNS, and Adam Tooter, P/Kaufmann Contract
- 7.** Kevin Fitzgerald, Impression Sales; scholarship recipient Natalie Stotz; and chapter president Sarah Churchill, Benjamin West
- 8.** Carrie Crook, programming director, and Brittany Spinner, VP of development, Rocky Mountain chapter



Arizona

The chapter hosted its annual Supper Club, an event to celebrate local restaurants and design, in January. Members enjoyed a three-course meal at Chantico Mexican Food Restaurant in Phoenix. Chantico's general manager spoke to the group about his journey in the local restaurant industry as well as the interior design of the space which combines native desert flora with modern architecture. The event was hosted on the restaurant's beautiful outdoor private patio and the chapter enjoyed learning about the local industry as well as getting to know new members.

- 1.** Beth Katz, Katz Design Group; Adelita Rosenberg, VHF; Jennifer Bullock and Katie Knerr, Monogram at BBGM; and Jason Neufeldt Majestic Lighting
- 2.** Michelle Purcell, RSP; Adelita Rosenberg, VHF; Deidre Schwartz, Woodcraft Hospitality; Sarah Whitman, Facings of America; Beth Katz, Katz Design Group; and Jacque Heaton Mendil + Meyer
- 3.** An event tablescape at Chantico restaurant in Phoenix



CHAPTER HIGHLIGHTS

Atlanta

The chapter closed the year in December with its in-person 2021 Holiday Gala Awards event, recognizing Atlanta's 2022 TopID firms (Design Continuum, Inc., Design One Studio, and Sims Patrick Studio), and scholarship recipients (Atefeh Langoroudi, Callie Welsh, Kristin Kynard, and Laura Alderman). Camryn Willis was awarded the IHG Kevin Woodard Scholarship. This event is one of its largest fundraisers providing scholarships to students pursuing hospitality careers.

It kicked off 2022 with a tour of Wylie Hotel in Ponce de Leon designed by Pixel Design Collaborative and where the board and committee chair members met for the first time this year. Soon followed its Valentine Cheers Ice Skating social event—although cold, there was great attendance. President, Penny Shelton and director of student relations Debanshee Kalani spent a day at SCAD-Atlanta educating students on scholarship opportunities and how to get involved through the chapter.

Providing resources for members and the design community is very important, and one of those resources includes virtual CEUs each month from the corporate member sponsors. The chapter looks forward to the many activities, events, and educational opportunities planned as we navigate through 2022. Visit the chapter website for more information at newh.org/chapters/atlanta.



- 1.** 2022 IHG Hotels & Resorts Kevin Woodard Memorial Scholarship: Camryn Willis with Jennifer Steffins, IHG, and Dallas Bentley, past president and chapter delegate
- 2.** 2022 NEWH Atlanta Scholarship Award: Kristin Kynard and Megan Laurel-Markham Orr, scholarship director
- 3.** 2022 NEWH Atlanta Scholarship Award: Laura Alderman (right) and Megan Laurel-Markham Orr, scholarship director
- 4.** 2022 TopID NEWH Atlanta: Taylor Carson, Kailey O'Connor, Marcela Vallejo, Hannah Murray, Karen Jenkins, and Stephanie Boyd, Design Continuum, Inc.
- 5.** 2022 TopID NEWH Atlanta: Tinsley Cohen, Sophie Naneix, Jenny Rutledge, Melissa Wylie, and Liz Glassl, Sims Patrick Studio

- 6.** New member recruiting at SCAD Atlanta: Debanshee Kalani, student relations director and Penny Shelton, president
- 7.** 2022 TopID NEWH Atlanta: Samantha Pernas, Shweta Deo, Danielle Moss, Nicole Lijana, and Katrina Garcia, Design One Studio
- 8.** 2022 chapter board members Travis Snyder, Jessica Kendrick, Gena Long, Jennifer Cahill-Letourneau, Megan May, Emily Hatch, Todd Fuller, Angie Law, Deniz Beyhan, Britany Panachida, Deaderia Morris-Bowman, Penny Shelton, and Kelly McCallister
- 9.** Attendees at the Valentine's Cheers ice skating social event
- 10.** The Wylie Hotel tour designed by Pixel Design Collaborative: Jennifer Davis, Maria Garz Gossett, Kendal Rogers, and Alyssa Foster

South Florida



305 Hats Off Brunch

Each year, **NEWH South Florida** honors their members by hosting a Members Only Hats Off Appreciation Brunch. During this exclusive event, the year's **Top ID Firms** are invited for a panel discussion to speak on relevant topics and industry trends. This year's theme was "305 Miami" and guests had a great time enjoying a delicious Latin inspired brunch buffet and unlimited mimosas. Attendees of the event celebrated Miami's unique culture by wearing fun sun hats, playing dominos, and taking photos in the interactive photobooth. Many thanks to the NEWH event committee members and special sponsors who made the day a huge success!

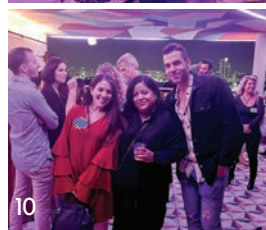
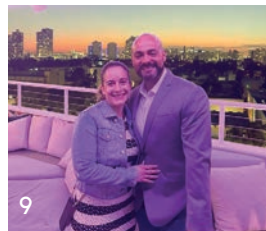


1. Eric Fernandez (Coast2CoastFurniture), Stella Peña (Studio 5), Romy Arango (Dal-Tile), Casie Idle (ID & Design International) Jennifer Delmas (EoA), Samantha Kan (The Kan Kollection) 2. TOP: Sandra Torres Holland (Emser), Max Collicelli (Emser), Julie Rodriguez (Emser) BOTTOM: Maria Cachonegrete (Dal-Tile), Ana Garcia (Modis) 3. Elena Flammengo (Gensler), Monica Bernal (Couristan), Teresa Arribas (Gensler), Gyselle Cruz (Gensler) 4. Rudy Sony (WAC Lighting), Jennifer Delmas (EoA), Keith Stibler (KM Associates) 5. Romy Arango (Dal-Tile), Kenia Espinosa (PTY Lighting), Joe Espinosa (PTY Lighting), Eric Fernandez (Coast2Coast Furniture) 6. Mikey Dobin (Valley Forge Fabrics), Sherif Ayad (IDD), Diana Farmer-Gonzalez (Gensler), Malcolm Berg (EoA)

Disney Themed BOWLING FUNDRAISER

"If you can dream it, you can do it!"

Coming soon in early June!



7. Jessica Galdamez (Empire Office), Stella Peña (Studio 5) 8. Javier Calvo (HBA), Carolina Coelho (Tilebar) 9. Jennifer Delmas (EoA), Joel Figueroa (Propman Trucks) 10. Marilyn Kaufmann (Jamie Stern Designs), Maria Cachonegrete (Dal-Tile), Javier Calvo (HBA)

CHAPTER HIGHLIGHTS

United Kingdom

The chapter will be hosting lots of exciting events in 2022—its 20th anniversary year—such as a Postcard Auction and InspirED – People who inspire. An anniversary party will be held in June, and the chapter board looks forward to celebrating its success over the last two decades with its members.

Roca London Gallery hosted the chapter's TopID event last November, recognizing the contributions of Goddard Littlefair, Nous Design, and Dennis Irvine Studio within the UK hospitality sector. The annual fundraiser and scholarship presentation was held in the Bloomsbury Hotel in September 2021 and was well attended by NEWH members and friends. Scholarships were awarded to students Emily Marzocchi, Gintare Rapoport, and Bianca Tirca, by sponsors Ulster Carpets, Sanderson, and Grohe.



1. NEWH scholarship recipient Emily Marzocchi and sponsor Karl Lennon, Grohe, at the fundraiser and scholarship presentation

2. TopID winners Gemma Prentice and Tom Blackshaw, Goddard Littlefair; Nir Gilad, Nous Design; and Dennis Irvine, Dennis Irvine Studio with sponsor Jon Bond, Roca, and NEWH UK president Caroline Cundall (middle)

3. The chapter's calendar list of events 2022



New England Region

NEWH New England hosted an Apres-Skate event at Time Out Market in Boston in February. Attendees were asked to don their finest apres-ski wear and join for ice skating, cocoa, and conversation. The event was an intimate affair with 15 people gathering on the ice and in the Market for a cocktail hour. It was a fun and welcoming introduction to in-person events in 2022.



1. Lauren Cardono, G Hospitality; David Cushman, Cushman Contracting; Augusta Hahnel, McMahon Architects; Megan Brennan, Shaw Contract; and Sirena Melton, Phillip Jeffries



2. Heidi Limone, Astro Lighting; Ashley Limone and Gail Zolotas, Zolotas Kitchen & Bath; Gary Cardono, G Hospitality Furnishings; David Cushman, Cushman Contracting; and Lauren Cardono, G Hospitality

3. Megan Brennan, Shaw Contract; Brenda Wheatley, GS Associates; Sirena Melton, Phillip Jeffries; Augusta Hahnel, McMahon Architects; Jocelyn Delaney, Tarkett Hospitality; Heidi Limone, Astro Lighting; and Ashley Limone, Zolotas Kitchen & Bath

4. Sirena Melton, Phillip Jeffries; Lauren Cardono, G Hospitality; and Augusta Hahnel, McMahon Architects

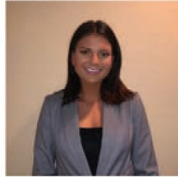


New England Region

MEET OUR 2022 NEW ENGLAND STEERING COMMITTEE



GARY CARDONO Steering Chair, RI
ALLI OROSKI Steering Chair-Elect, Marketing, MA
JILLIAN WELENC Secretary, CT
ANGELA DEWAR Scholarship, MA
SIRENA MELTON Programming, MA



REBECCA FARREN Membership, MA
MEGAN BRENNAN Equity, Inclusion & Diversity / Programming, NH
LAUREN CARDONO Marketing, RI
LILYGRACE YORK Student Relations, MA
LAUREN RADEMACHER Membership / EID, RI

2022 NEW ENGLAND TOP ID AWARDS

Congratulations!

Bergmeyer

DYER BROWN & ASSOCIATES



SAMUEL ADAMS BOSTON TAP ROOM
 Photography by: Anton Grassl Photography

TIME OUT MARKET BOSTON
 Photography by: Jared Kuzia

UPCOMING EVENTS //

APR 13
WINEDOWN WEDNESDAY
 AC HOTEL
 Portsmouth, NH

MAY 18
SUNSET CRUISE
 BOSTON HARBOR

JUNE
SAMUEL ADAMS BOSTON
 Celebrating Top ID Winner
 BERGMAYER

JULY 25
GOLF TOURNAMENT
 Plymouth Country Club
 Plymouth, MA

2022 ANNUAL SPONSORS



2021 NEWH SCHOLARSHIP RECIPIENTS



LEXI BELLE ZUBRICKI
 Endicott College
 Hospitality Management



MELISSA NICOLE PLUAS
 University of Southern Maine
 Tourism and Hospitality

April 2022

19-21

ULI Spring Meeting
San Diego
spring.uli.org

20

NEWH/Cincinnati Region
Spring Event

21

NEWH/Arizona
Wine and Dine Under the Stars
NEWH/Los Angeles Founding
Speaker Series

NEWH/South Carolina Region
Membership Drive

21-24

97th Annual Hotel Ezra Cornell
Ithaca, New York
hotelezracornell.com

22

NEWH/Atlanta
CEU

25

NEWH International Board of Directors
Meeting
Las Vegas

25

NEWH/AC-Philadelphia Region
Spring Sips

26-28

HD Expo & Conference
Las Vegas
hdexpo.hospitalitydesign.com

28

NEWH/Las Vegas
Networking Event

30

NEWH/Rocky Mountain
Student Mentoring Event

May

1-4

ARDA Spring Conference 2022
Hollywood, Florida
arda.org

2

NEWH/Atlanta
Board Meeting

3

NEWH/Dallas
Summer Social
NEWH/United Kingdom
Board Meeting

3-5

International Hospitality Investment
Forum
Berlin, Germany
hospitalityinsights.com

4

NEWH PerspectiVe
Conversations with NEWH Corporate
Partners and TopID Recipients

NEWH/Los Angeles Founding
Board Meeting

4-8

DesignMarch
Reykjavik, Iceland
designmarch.is

5

NEWH/Atlanta
Golf Event

Meet Up North
Manchester, UK
hoteldesig.net

8

NEWH/Los Angeles Founding
CEU

11-12

retailX
Chicago
retailx.com

12

NEWH/Chicago
CEU

NEWH/New York
CEU

NEWH/Rocky Mountain
Membership Event

NEWH/Vancouver Region
Hotel Tour and Mingle

14-16

The International Contemporary Furniture
Fair (ICFF)
New York City
icff.com/fair

14-17

DOMOTEX
Turkey
domotexturkey.com

16-18

Saudi Entertainment & Amusement
Riyadh, Saudi Arabia
saudientertainmentexpo.com

18

NEWH/New England Region
Harbor Cruise Fundraiser

19

NEWH/Los Angeles Founding
Hotel Tour and Happy Hour
NEWH/Northwest
Hotel Tour

19-22

BOND Leading 5-Star Hotel Designers
Nassau, Bahamas
bondevents.com/events

20

NEWH/Atlanta
CEU

21

NEWH/San Francisco Bay Area
Hotel Tour

21-24

National Restaurant Association Show
Chicago
nationalrestaurantshow.com

24

NEWH/New York
Toasty Tuesday

24-26

Clerkenwell Design Week
London, England
clerkenwelldesignweek.com

Middle East Design & Hospitality Week
Dubai, United Arab Emirates
designhospitalityweek.com

HITEC Dubai / The Hotel Show Dubai
Dubai, United Arab Emirates
hftp.org/hitec/dubai/

26

NEWH/Atlanta
Hotel Tour

NEWH/Las Vegas
Scholarship Awards Event

June

1

NEWH PerspectiVe
Conversations with NEWH Corporate
Partners and TopID Recipients
NEWH/Los Angeles Founding
Board Meeting

2

NEWH Regional Tradeshow
Denver

6

NEWH/Atlanta
Board Meeting

7

NEWH/Atlanta
Membership Drive/Bowling Event

NEWH/United Kingdom
Board Meeting

7-8

Cruise Ship Interiors
Miami, FL
cruiseshipinteriors-expo.com

8

NEWH/New York
Owners' Roundtable – TopID Event

8-10

HI Design Europe
Tenerife, Spain
hidesigneurope.com

9

NEWH/South Florida
Bowling Fundraiser

16

NEWH/Los Angeles Founding
Membership Drive/Bowling Event

NEWH/New York
Coffee Talk

NEWH/Washington DC Metro
SOTHI Event

21

NEWH/San Francisco Bay Area
State of Hospitality Event

23

NEWH/Las Vegas
State of the State Panel Discussion

24

NEWH/Atlanta
CEU

July

1-31

NEWH/Northwest
Rubber Ducky Race

5

NEWH/United Kingdom
Board Meeting

6

NEWH PerspectiVe
Conversations with NEWH Corporate
Partners and TopID Recipients
NEWH/Los Angeles Founding
Board Meeting

13

NEWH/Los Angeles Founding
CEU

14

NEWH/Chicago
Summer Social

19

NEWH/New York
Member Drive
NEWH/Vancouver Region
Golf Tournament

21

NEWH/Cincinnati Region
Member Event
NEWH/Los Angeles Founding
Trunk Show

22

NEWH/Atlanta
CEU

25

NEWH/New England Region
Golf Outing

28


NEWH/Las Vegas
Thirsty Thursday

*Dates subject to change. Check newh.org/events for current information

CRYPTON
FABRIC INTELLIGENCE

We clean up well.
Disinfectable, cleanable and utterly irresistible.

CHAPMAN
HOSPITALITY LIGHTING



chapmanhospitality.com

LILY JACK

**WEST COAST
COLLECTION**

MANUFACTURING IN USA, MEXICO & ASIA

WWW.LILYJACK.COM

PORCELANOSA[®]
TILE · KITCHEN · BATH · HARDWOOD

**FLOOR AND STAIRCASE TILES LIEM DARK POLISHED
WALL TILES ARIA WHITE POLISHED**

CALIFORNIA | COLORADO | CONNECTICUT | DISTRICT OF COLUMBIA
FLORIDA | GEORGIA | ILLINOIS | MARYLAND | MASSACHUSETTS
NEW JERSEY | NEW YORK | PENNSYLVANIA | TEXAS | VIRGINIA | WASHINGTON

WWW.PORCELANOSA-USA.COM | INFO@PORCELANOSA-USA.COM

NEW MEMBERS

MEMBERSHIP DRIVES CONTINUE TO BE SUCCESSFUL ACROSS ALL CHAPTERS
MEET THE NEW ADDITIONS TO THE NEWH FAMILY

ARIZONA

Corporate Partner Courtesy Member

Ted Scheufler

Crossley Axminster, Inc.
President

General

Beth Chandler

Mohawk Industries, Inc.
Account Executive

Betsy Maddox

Forms+Surfaces
Territory Manager

Kathleen Moreland

Forward Tilt
Workplace Consultant

Julie Running

Contract Furniture Associates,
LLC
Account Manager

Rachel Trimble

Bobier Sales, Inc.
Luxury Products Sales Manager

ATLANTA

Corporate Partner Courtesy Member

Jeff Dellinger

SERGE FERRARI
Marine & Distribution Business
Development Manager

Ashley Hixson

Signature
Sales Representative

Brooke Kahn

KB Contract
Senior Marketing Manager

Chapter Business Courtesy Member

Darby Burgess

DAC Art Consulting
Client Relations Associate

Chapter Business Member

Regan Elliott

Banko Design, LLC
Interior Designer

Caroline Fritze

Banko Design, LLC
Interior Designer

Education Professional

Beth McGee

Georgia Southern University
Assistant Professor

General

Jennifer Harlan

Colorchrome
Vice President, Sales and
Marketing

Katherine Kennedy

Sesco Lighting, Inc.
Specification Sales
Representative

Gena Long

Jerry Pair & Associates, Inc.
Showroom Sales

Maggie Marlowe

Manufacturers Representative
Territory Manager

Erica Rolin

Crossville Studios
Account Development Specialist

ATLANTIC CITY/ PHILADELPHIA REGION

Corporate Partner Courtesy Member

Jesenia (Jes) Rodriguez

Evan Shatz Sales Associates
Interior Designer/Sales Associate

Education Professional

Krystal Peters

Cheyney University
Professor and Program
Coordinator

General

Jessica Donnelly-Banks

Donnelly Banks Interiors
Founder and Principal Designer

Gerard Rementer

Zenna Hospitality
National Sales Manager

CHICAGO

Corporate Partner Courtesy Member

Julia Gillespie

Crypton + Nanotex
Vice President of Marketing

Business Plus Courtesy Member

Carlos Lopez

GRAFF
Digital Marketing Director

Chapter Level Business

SYMMETRY RESOURCES

Chapter Business Courtesy Member

Robert (Rob) Harper

Symmetry Resources
President

Brand Ambassador

Alvaro Montoya

Hyatt Hotels Corporation
Studio Head | Regional Vice
President Lifestyle Brands

Associate

Samantha Campbell

Alden Design Group, Inc.
Junior Designer

Education Professional

Stacy Strand

Ivy Tech Community College of
Indiana
Program Chair

General

Samantha Audet

Pierre-Yves Rochon, Inc.
Interior Designer

Chris Costello

Added Sales Company
Outside Sales Representative

Angela Harada

Kevin Barry Art Advisory
Vice President of Sales

Roоз Irani

The Gettys Group
Designer II

Kerry Panko

IIG/Chicago
Studio Director-Select

Nisha Shah

Alden Design Group, Inc.
Director of Interiors

Greg Sinzheimer

Parterre Flooring Systems
Account Executive

Leanne Waters

Kevin Barry Art Advisory
Account Manager, Midwest

DALLAS

Corporate Partner Courtesy Member

Trish Garrett

Shaw Contract Hospitality
Sales Representative

Sarah Hubbard

Crossley Axminster, Inc.
Regional Sales Executive

Jimmy Igoue

Signature
Account Executive

Allison Lampo

Crossley Axminster, Inc.
Sales Executive

Corporate Partner Member

Anna McArthur

P/Kaufmann Contract
Sales Associate

Business Plus Courtesy Member

Christina Vessels

GRAFF
Sales Representative

Chapter Level Business

TABLEAUX

Chapter Business Courtesy Member

Chris Aler

Tableaux
Commercial Project Manager

Ashley Seaman

Tableaux
Commercial Account Manager

Chapter Business Member

Rene Michaels

Tableaux
Vice President Marketing &
Operations

Thomas von Schimonsky

Tableaux
President & Co-Founder

General

Paula Azevedo

pja Create Studios, LLC
Founder, Creative Director

Alexis Bourn-Lipsett

Stellar Works
Accounts Director

Camille Castleberry

Durkan Hospitality
Account Executive

Martha Champagne

Premier Design Studio
Interior Designer

Katy Curtis

75 Degree Design Studio
Owner

Samantha Falkner

Cush Living
CEO

Paula Greenroy

Emser Tile, LLC
Territory Manager-A&D

Ashley Loftin

Roadrunner Interiors
Owner/Director of Design and
Procurement

Deb Martz

Chair Care Patio
President

Binal Patel

BOKA Powell, LLC
Design Professional II

Lori Shurafa

Arc|Com Fabrics, Inc.
Account Executive

Christy Thompson

Ellis Adams Group
Studio Principal

Susan Vitek

C&C Wholesale Distributors
Architectural Specification
Manager

Vanessa Weidner Cohen

Holly Hunt Collection
Outside Sales Contract /
Residential

HOUSTON

Corporate Partner Courtesy Member

Deidra Lashmet

D. Lashmet Group
Sales Representative

Elaine Schroder

KB Contract
Senior Sales Manager

General

Jose Gutierrez

SELF Electronics USA
Corporation
Business Development Manager

Christopher Olexy

Landry's Restaurants, Inc.
Interior Designer

Kendra Raines

KBK Procurement
Principal

INDIANA REGION

Corporate Partner Courtesy Member

Brady Hall

Kimball Hospitality
Director of Sales

LAS VEGAS

Chapter Level Business

**THE WRIGHT HOSPITALITY
GROUP LAS VEGAS**

Chapter Business Courtesy Member

Steven Wright

The Wright Hospitality Group
Las Vegas
Vice President

NEW MEMBERS

MEMBERSHIP DRIVES CONTINUE TO BE SUCCESSFUL ACROSS ALL CHAPTERS
MEET THE NEW ADDITIONS TO THE NEWH FAMILY

Mark Wright

The Wright Hospitality Group
Las Vegas
Principal

Chapter Business Member

Joseph Wright

The Wright Hospitality Group
Las Vegas
Sales Representative

Education Professional

Jorge Hernandez Castro

University of Nevada-Las Vegas
Instructor of Architecture

General

Kevin Ball

Affinity Gaming
Vice President, Purchasing

Beth Campbell

Campbell House
CEO

Danielle Dorsey

Delco Sales LLC
Account Manager

LOS ANGELES FOUNDING CHAPTER

Corporate Partner Courtesies Member

Misha Bedner

Agency 967
President

Lewis Egley

Agency 967
Account Manager

Michele Paredes

Crossley Axminster, Inc.
Regional Sales Executive

General

Tina Carrillo

Cortina Leathers
Regional Sales Manager

Jeannette Chacon

F. Schumacher & Company
Hospitality Design Consultant

Timothy Davis

Hospitality Trading Corp., Inc.
Sales Representative

Lisa Eddy

Kalisher
Business Development Executive

Monique Farley

HotelFurniture.com
Director of Design and
Procurement

Molly Frier

Key & Commons
President

Deborah Montano

Phillip Jeffries, Ltd.
LA Contract Sales Representative

Julian Seidenberg

Architectural Leather Works
Owner/Operator

Allison Wahba

simplehuman
National Sales Manager/New
Business Development Manager

MID-SOUTH REGION

Chapter Business Member

Morgan Witter

ACC Design
Senior Interior Designer

General

Erica Dickson

Platform Surfaces
A&D Representative

Sam Green

Concept Surfaces, LLC
Marketing Representative

Kalyn Johnson

HBG Design
Interior Designer

Katja McGinn

Creative Support Service
Sales Representative

Ashley Parrott

AEP Hospitality Consulting
Principal

MICHIGAN REGION

Corporate Partner Courtesies Member

Lance Keziah

Crypton + Nanotex
President and CEO

MILANO

Business Plus Courtesies Member

Massimiliano Lorenzi

GRAFF
Country Manager, Italia

Maurizio Meloda

GRAFF
Technical Director presso

Chapter Level Business

WALL&DECÒ S.R.L

ZANOTTA S.P.A

Chapter Business Courtesies Member

Gabriele Caprotti

Zanotta S.p.A.
Design/Sales

Christian Tomadini

Wall&decò S.r.l.
Managing Director

Maria Pina Tomaiuolo

Wall&decò S.r.l.
Italy Sales Manager

Beatrice Vacchelli

Zanotta S.p.A.
Contract Manager

General

Alessandra Barbetta

Italian Design Brands S.p.A.
Business Development Manager

Gioia Molinari

Raum & Projekt GmbH
Agent

Mauro Santinato

Teamwork Hospitality S.r.l.
CEO

NEW ENGLAND REGION

Corporate Partner Courtesies Member

Michaela Harpin

Crossley Axminster, Inc.
Regional Sales Executive

General

Laura Hurvitz

Pierre Frey
Outside Sales Representative

Amanda Marcello

Sonesta International Hotels
Head of B2B Franchise Marketing

Kori Moses

MindClick SGM
Director, Hospitality Business
Development

Kimberly Patriarca

Garrett Leather Corporation
A&D Account Executive - New
England

LilyGrace York

Boston Modern Furniture
Associate of Sales and Business
Development

NEW YORK

Business Plus Courtesies Member

Sarah Raleigh

GRAFF
Regional Sales Manager

Brand Partner Member

Richard Friedman

Everything Hospitality
President

Robert SuDock

Designers Source Group
President/Owner

Education Professional

Carol Bentel

School of Visual Arts
Chair

General

Carlita Alexander

Carlita Alexander Design
CEO, Principal Designer

Paul Cabiati

Schluter Systems, LP
Architectural Manager

Hannelore Freer

Marvel
Senior Designer

Victor Garcia

Marriott International, Inc.
Senior Design Manager

Erik Gardner

Shawmut Design & Construction
Director

Rachael Grochowski

RHG Architecture + Design
Founder + Principal

Jon Healy

The HARP Team, LLC
Principal

Elizabeth Kahen

Creative Materials Corporation
Architectural Sales Associate

Michael Kraus

Michael Kraus Associates, LLC
President

Collette Russo

Emser Tile, LLC
Commercial Territory Sales - A&D

Alexandra Zwicky

Novità
Vice President

NORTH CAROLINA REGION

Chapter Business Courtesies Member

Zane Hembree

HTK Design, LLC
Comptroller

NORTH CENTRAL

Corporate Partner Courtesies Member

Brian Fredrickson

Signature
Sales Representative

Chapter Business Member

Anna Christiansen

Furniture Industries, Inc.
Design Assistant

Andrea Okeson

Furniture Industries, Inc.
Interior Designer/Design Director

Mariann Peterschick

Furniture Industries, Inc.
Vendor Manager

General

Rachel MacNally

Ste. Marie Design Group
Interior Designer

Tony Mitchell

A+D Elements, LLC
Sales Representative

NORTHWEST

Business Plus Courtesies Member

Hannah Tiffany

GRAFF
Sales Representative

Chapter Business Courtesies Member

Jenny Moore

Noble House Hotels & Resorts
Corporate Director of Revenue
Strategy

Associate

Katie Hogan

Interior Designer

General

Chad Ballard

Surface Art, Inc.
Director of Commercial and
Architectural Design

Gillian Bardin

Emser Tile, LLC
Territory Manager

Meredith Coopman

InnSpace
Design Director

Jeni Elam

Columbia Hospitality
Director, Operations & Advising

Angela Glatz

Source
General Manager

NEW MEMBERS

MEMBERSHIP DRIVES CONTINUE TO BE SUCCESSFUL ACROSS ALL CHAPTERS
MEET THE NEW ADDITIONS TO THE NEWH FAMILY

Yezi Han

Jensen Design Architects
Principal of Interior Architecture

Jaliene Hollabaugh

Hollabaugh Brothers &
Associates
Director of Marketing

Michelle Hubbard

Jensen Design Architects
Senior Interior Designer

Tricia Lawyer

Innovative Designed
Environments Associates, Inc.
Senior Interior Designer

Lisa Soushek

Marriott International, Inc.
Project Manager

Asami Tachikawa Choe

Gensler/Seattle
Design Director/Associate

Willie Traeger

InnSpace
Interior Designer

Tim Wade

Tim Wade Real Estate
COO

ORANGE COUNTY REGION

Corporate Partner Courtesy
Member

Jaylene Brown

Hospitality Resources
Sales Representative

Ethan Johnson

SERGE FERRARI
National Specification Manager

Business Plus Courtesy
Member

Erica Lynn

GRAFF
Southern California Territory
Manager

General

Kim Golson

Shademaker USA
Contract Sales Manager

Anne Konie

Wolf-Gordon, Inc.
Account Executive

Brenda Ziegler

Brenda Kristine
Owner

PARIS

General

Laurie Bonin

ARTPOINT
CEO

ROCKY MOUNTAIN

Business Plus Courtesy
Member

Nick Wilson

Architex International
Market Manager

Annie Mimick

Tryba Architects
Interior Designer

General

Lea Hope Bonzer

Thymos Art, LLC
Founder and Owner

Deanna Henderson

Offay Design Studio
Creative Director

Eliane Kelley

UNUM:collaborative
Architectural Interior Designer

Jenna Knowles

Concept Surfaces, LLC
Marketing Representative

Julia Ryan

Luck Rep Group
Principal

Aurora Salinas

Glenrock Distributing
Sales Representative

SAN FRANCISCO BAY AREA

Chapter Level Business

EDG INTERIOR ARCHITECTURE + DESIGN

Chapter Business Courtesy
Member

Akiko Hrovat

EDG Interior Architecture +
Design
Studio Design Director

Chapter Business Member

Christine Anneken

EDG Interior Architecture +
Design
Designer

Sara Bernhard

EDG Interior Architecture +
Design
Office Administrator/Resource
Librarian

Nicole Bertrand

EDG Interior Architecture +
Design
Junior Designer

Education Professional

Angel Gonzalez

California State University-
Monterey Bay
Professor

Sharon Rainwater

California State University-
Monterey Bay
Administrative Support
Coordinator

General

Nick Kalyan

Frank & Ron Hotel-Motel
Supply, Inc.
Vice President

Joe LaBarre

Garrett Leather Corporation
Account Executive

David Lloyd

LMI Architectural Resources
President

Chad Moore

Arktura, LLC
Manager, Sales Representative

Theresa Youn

LX Hausys, Ltd.
Commercial Sales Manager

SOUTH FLORIDA

Corporate Partner Courtesy
Member

Pou Gore

SERGE FERRARI
Brand Development Specialist

Andres (Andy) Viera

vContract, LLC
President

Chapter Level Business
LE FER FORGE DRAPERY
HARDWARE

STANTEC/MIAMI

V STARR

Business Plus Courtesy
Member

Rey Bordabeche

GRAFF
Projects/Business Relations
Manager

Jean-Michel Lenoir

GRAFF
Florida Territory Manager

Chapter Business Courtesy
Member

Raed Alawadhi

Stantec/Miami
Senior Associate/Design
Manager

Hande Obuz

Stantec/Miami
Senior Architect/Senior
Associate

Chris Scarano

Le Fer Forge Drapery Hardware
President/Owner

General

Maria Abad

iSIMAR
Vice President Sales, Americas

Maureen Allyn

Allyn Rae Group
Principal

Jennifer Lutton

DANAO
VP of Hospitality and Contract
Sales

Amy Massey-Kennedy

AMK Procurement, LLC
Owner

Jennifer Paladino

Dunagan Diverio Design Group
Director of Design

Louis Pecora

Valor Design Collaborative
Owner

Jamie Shelton

Hafele America Co.
Business Development
Manager

SUNSHINE

Corporate Partner Courtesy
Member

Michael Muscarella

ISG Installation Service Group

Conor Sullivan

SERGE FERRARI
Brand Development Specialist

Sean Wooley

ISG Installation Service Group

Chapter Level Business

IIG/ORLANDO

Chapter Business Courtesy
Member

Courtney Crawford

IIG/Orlando
Interior Designer II

General

Muriel Holy

Formica Corporation
A&D Representative, Central
Florida

Pamela Villafane

Carroll Adams Group, Inc./
Orlando
Director of Business
Development

TORONTO

Chapter Level Business
THE CHEGA GROUP

Chapter Business Courtesy
Member

Chris Chega

The Chega Group
Owner

Chapter Business Member

Susan Burnside

The Chega Group
Vice President/Design

Jelena Cuturilo

The Chega Group
Buyer

UNITED KINGDOM

Corporate Partner Courtesy
Member

Anna-Karina Hedley

Down Etc.
Sales Executive

Lydia McGarvey

ULSTER
Contract Designer

Business Plus Courtesy
Member

Mark Booth

GRAFF
European Sales Director

Delia Lakwera

GRAFF
Project Specifications Manager

Richard Udell

GRAFF
UK Sales Manager

Chapter Business Member

Hazel Cooke

Panaz, Ltd.
Head of Hospitality

Brand Ambassador

Emma King

IHG InterContinental Hotels
Group
Head of Premium, Luxury &
Lifestyle Design - Europe

NEW MEMBERS

MEMBERSHIP DRIVES CONTINUE TO BE SUCCESSFUL ACROSS ALL CHAPTERS
MEET THE NEW ADDITIONS TO THE NEWH FAMILY

General

Jacob Allan
BETTE GmbH & Co. KG
Project Sales Manager

Jo Ingham
Fileturn, Ltd.
Sales and Marketing Manager

Fraser Lockley
Parkside Architectural Tiles
Specification Manager

Catherine Shaw
Jab International Furnishings,
Ltd.
Contract Sales Manager

Alex Tatnell
Sekers Fabrics, Ltd
Area Sales Manager

Raminder Viridi
Lutron Electronics Co., Inc.
Specification Sales

VANCOUVER REGION

Chapter Level Business
PROSTAR CONTRACTING

Chapter Business Courtesy
Member

Jenny Ho
Prostar Contracting
Business Development
Manager

Education Professional
Debbie Johnstone Bjerke
Kwantlen Polytechnic University
Program Administrator

General
Leah Buchan
Phillip Jeffries, Ltd.
Sales Representative

Kat Grassam
LightForm Canada
Account Executive

Daniel Meloché
Daniel Meloché Design
Owner and Creative Director

WASHINGTON DC METROPOLITAN

Corporate Partner Courtesy
Member

Rebekah Rowan
Moen / House of Rohl
Strategic Account Manager

Chapter Level Business - Top
Tier

**HILTON GLOBAL DESIGN
SERVICES**

Chapter Level Business
**MID-ATLANTIC LIGHTING,
LLC**

Chapter Business Courtesy
Member

Eduardo Armenta
Mid-Atlantic Lighting, LLC
Sales Representative

Luisa Gonzalez
Hilton Global Design Services
Senior Design Manager

Alan Kerslake
Hilton Global Design Services
Director, Architecture & Design
- Luxury Brands

Eric Korn
Mid-Atlantic Lighting, LLC
Principal

Vito Lotta
Hilton Global Design Services
Vice President Architecture &
Design

Larry Traxler
Hilton Global Design Services
SVP Global Head of Design

Chapter Business Member

Teri Dolan
Hilton Global Design Services
Design Manager, Full Service
Brands

Negar Ghassemieh
Hilton Global Design Services
Senior Manager, Architecture &
Design - Luxury and Lifestyle
Brands

Katie Guillen
Baskervill
Level 2 Interior Designer

Haley Siconolfi
Baskervill
Interior Designer

Antony Vereb
Hilton Global Design Services
Hilton Grand Vacations and
Embassy Suites Global Design

Fonting Yu
Hilton Global Design Services
Design Manager-Full Service
Brands

Education Professional
Elizabeth DeRose
Frederick Community College
Institute Manager, Hospitality &
Tourism

General
Tessa Almond
BAMO, Inc.
Senior Designer

Nicole Ben
CAMBRIA
Commercial Market
Representative

Molly Beste
LIXIL Water Technology
Senior Group Leader, A&D
Hospitality

Megan Capo
Cuhpoe
Designer + Creative Director

Colton Fries
Warp & Phil
National Sales Director

Lianne Kitzmiller
DesignAgency
Intermediate Designer

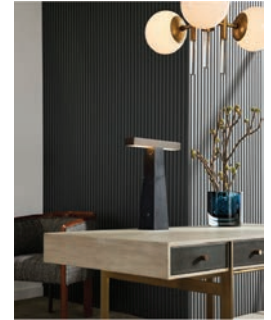
Connor Seiger
SR/A Interior Architecture and
Design
Junior Interior Designer

ARTERIORS

contract

This year, Arteriors celebrates its 35th anniversary. With an ongoing quest for the latest materials and sustainable practices, it continues to build partnerships with artisans around the globe—now spanning 60 factories in more than a dozen countries. Global expansion has driven its product design team to develop versatile pieces, and the Spring '22 collection introduced 299 new products across four categories. The company understands the time-sensitive nature of design, and throughout the pandemic it has remained positioned to deliver product to customers quickly and easily with in-stock offerings available to ship within a week or less. It also continues to reach customers worldwide through the virtual tour of its 5,000-square-foot Dallas flagship showroom which offers a full view of its collections.

“NEWH aligns with our core values—a commitment to the creativity and innovation that drives our industry forward,” says Terry Clayton, senior vice president of sales and marketing. “Supporting emerging talent, providing education and opportunities while facilitating greater networking helps us all stir our collective imagination to uncover what’s new and next.”



As a corporate partner of NEWH for the past several years, ISG has managed the logistics and transportation necessary for the several regional tradeshows around the country, as well as major industry tradeshows including HD Expo + Conference and BDNV. The networking opportunities and comradery it finds through NEWH have been instrumental in ISG’s success. The company is also allied with TForce Worldwide, a North American transportation and logistics provider,

partnering with a diverse group of customers in the U.S., Canada, and Mexico. Its vast e-commerce network spans more than 80 cities.

Hospitality and tourism has returned to Florida. ISG has been busy working with local hotel and timeshare resorts. Currently, it is working with Loews Hotels on the Universal Resorts renovation project underway at the retro-themed Cabana Bay Beach Resort with 2,200 guestrooms and suites.



Milliken Hospitality’s Arboreal (shown) is a continuation of its Modular Landscapes solution for a post-pandemic hospitality world and inspired by the 600-acre Arboretum at the Milliken headquarters in Spartanburg, South Carolina. Established in 1969, this green space is a symbol of the company’s commitment to environmental responsibility.

The collection offers four abstract nature patterns in colors Cedar and Trident. In November 2021, Milliken introduced its M/PACT carbon neutral program. Today, its carpet, LVT, and entryway tiles are carbon neutral. Milliken will continue to invest in new technology and create flooring products that enable better choices.

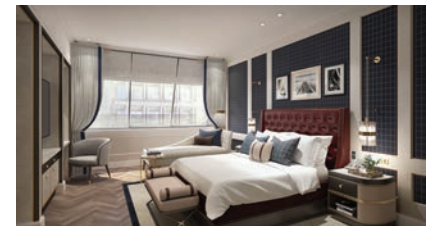
Milliken has been a strong supporter of NEWH for 30-plus years. The organization is important to the overall health of our industry: creating bridges for communication and networking; supporting the design, ownership and supplier communities; and driving synergy.



Valley Forge Fabrics recently completed the window treatments at the Langham Hotel Boston (shown here in the Chairman’s suite bedroom). It is also excited to launch a new addition to its F.R.E.S.H. line of sustainable textiles which contains several collections of textiles that are made with recycled materials and/or are recyclable themselves. This year is adding Upcycled Marine Upholstery which is woven with yarns made from

plastic specifically reclaimed from our oceans and waterways. While it is nothing new for Valley Forge to develop products with content made from recycled polyester and plastic, using plastic trash pulled from the oceans allows it to positively impact our environment and increase standards for sustainable textiles in a new way.

Valley Forge continues to support NEWH because of the synergy within the industry overall. NEWH provides continuing education and networking opportunities for new and seasoned hospitality professionals alike—and the opportunity to connect with each other is now more of a priority than ever.



Thanking NEWH, Inc.’s 2022 Corporate Partners

Benefactor: DURKAN HOSPITALITY | FABRICUT CONTRACT/S. HARRIS | MILLIKEN FLOORS | SIGNATURE | ULSTER **Patron:** BERNHARDT HOSPITALITY | BRINTONS | DELTA FAUCET COMPANY | EMERALD | INSTALLATION SERVICE GROUP | KB CONTRACT | MOEN / HOUSE OF ROHL | P/KAUFMANN CONTRACT | PTY CUSTOM LIGHTING | VALLEY FORGE FABRICS **Supporting:** AMERICAN ATELIER, INC. | ARTERIORS CONTRACT | ARTLINE GROUP | ASHLEY LIGHTING, INC. | CHAPMAN HOSPITALITY LIGHTING | CROSSLEY AXMINSTER | CRYPTON + NANOTEX | DOWN ETC. | ENCORE HOSPITALITY CARPET | FIL DOUX TEXTILES | KIMBALL HOSPITALITY | LILY JACK | MANDY LI COLLECTION | PORCELANOSA | RICHLoom CONTRACT | SERGE FERRARI GROUP | SERTA SIMMONS HOSPITALITY | SHAW HOSPITALITY | SHELBY WILLIAMS | SUMMER CLASSICS CONTRACT | SURYA CONTRACT | TARKETT HOSPITALITY | TLS FURNITURE | TROPITONE FURNITURE COMPANY | W A L T E R S ■■■

RECOGNIZING DESIGN EXCELLENCE



The **TopID** award is a prestigious honor determined by **NEWH** chapter and regional boards to recognize and promote the best in our industry. This exclusive recognition is NEWH's way of supporting and promoting our designer membership.

Make sure to look out for your chapter's call for 2023 TopID nominations **opening in May!**



SPONSOR INDEX

SPONSOR	PAGE #
American Atelier, Inc.	37
Andaaz Manufacturing	45
Architex.	67
Armstrong Flooring	33
Arteriors Contract	61
Artline Group	49
Ashley Lighting, Inc.	27
Bernhardt Hospitality	41
Brintons	25
Brizo Kitchen & Bath Company.	23
Chapman Hospitality Lighting.	99
The Common Thread for the Cure	45
Crossley Axminster	45
Cruise Ship Interiors Expo America	51
Crypton + Nanotex.	99
Down Etc.	53
Durkan Hospitality	11
Elkay Manufacturing Company.	45
Encore Hospitality Carpet	35
Ennis Fabrics.	17
Fabricut Contract.	CV2, 5
Fil Doux Textiles	49
Florida Seating	59
Furniture Ateiler.	31
Gabby Contract	67
Global Safes	23
GRAFF	59
HD Expo and Conference 2022.	69
Installation Service Group.	63
ISA International	6-7
KB Contract.	61
Kimball Hospitality.	49
Lily Jack	99
Lodging Conference.	39
Loloey	53
Mandy Li Collection	67
Mario Industries Inc.	37
Milliken Floors	27
Moen / House of Rohl	29
NEWH TopID Nominations	105
OutDesign Group	9
PierPoint USA	37
P/Kaufmann Contract	41
Porcelanosa	99
PTY Lighting	17
Ratana International	47
Richloom Contract	59
Room and Board Business Interiors.	13
Samuelson Furniture	CV3
Serge Ferrari	59
Serta Simmons Hospitality Bedding.	27
Shademaker/Jardinico.	21
Shaw Contract Hospitality.	63
Shelby Williams	53
Signature	43
Stickley Furniture	19
Summer Classics Contract.	67
Surya Contract Studio	61
Tarkett Hospitality	CV4
TLS FURNITURE	67
Tropitone Furniture Company	63
Ulster	65
Valley Forge Fabrics, Inc	15, 29
W A L T E R S.	49



look both ways

Samuelson
LEGENDARY FURNITURE

View the entire Phorm collection at: samuelsonfurniture.com

SEATING • CASEGOODS • TABLES • CUSTOM FURNITURE

Shown:
Tete-a-Tete 8904
Spot Table 8738
Hexagon Table 8705

Blotted

CUSTOM CARPET

*Artistic
Expression
in Flooring*



 **Tarkett Hospitality**

Introducing, Blotted, a new custom broadloom collection from Tarkett Hospitality. Blotted, inspired by abstract expressionist art, juxtaposes soft, airy, delicate textures with expressive, erratic lines to create patterns that turn a space into an experience. Eleven patterns are fully customizable across a suite of constructions, colors, textures and pile weights – including rug options. For more information, visit [TarkettHospitality.com](https://www.tarkett.com) or call 800-871-3211.

Shown: Blotted BL 10N-680