

the
TEXTILE
EYE

INSIGHTS FOR INSPIRED DESIGNERS



**STAYING
POWER**

*Iconic American Designs of
Today & Tomorrow*

POINTS OF VIEW

Wallcovering Greats & Textile Mavens

Plus

SUZIE ZUZEK

& the Lilly Pulitzer look

Theme

the Purists

The enduring workhorses of surface design are the plains and textures. They form the backbone for modernist and minimalist upholstery choices, and they also carry importance in more traditional rooms: classic stone washed Belgian linen will always have pride of place in a minimalist setting, while a rich mohair velvet or a moiré taffeta makes a traditional scheme sing. Bouclé continues its moment, adorning rounded furniture forms and showing up in beloved neutrals as well as more interesting multicolored palettes. Pebbled and wood grain textures as well as heavy burlap effects add textural interest to walls. Subtle metallic hints including overprints and glazed finishes juxtapose glimmer against rough and rustic textures.

LOOKS

- Pile fabrics from chenille to velvet to cord
- Multi-tones or multicolors preferred over flat solids
- Raw & textured linens
- Heavy bouclé
- Multicolored flecks & dappled dots
- Tone-on-tone mini checks
- Overshot textures, knit motifs & complex chevrons
- Super-matte handwoven effects
- Novelty yarns in warp & weft

Linnher Hollingsworth for Kravet





Maya Romanoff

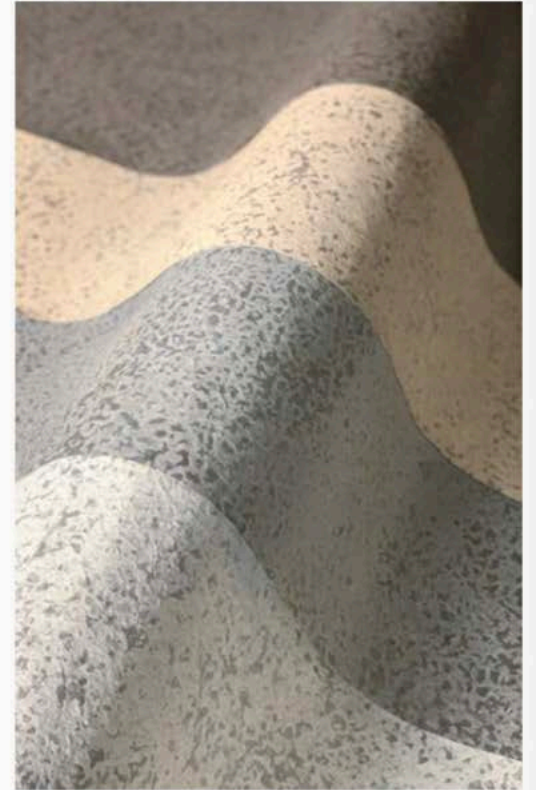


Maya Romanoff



Carlisle & Co.

the TEXTILE EYE



Maya Romanoff

Theme

***the* New Naturalists**

For centuries, nature has been the great muse—and in the modern day, its importance is no less impactful. Pattern designers turn to the natural world for inspiration, with current renditions offering personal and textural takes on trees, leaves, landscapes, and waterscapes. Florals, always an important mainstay, continue to dominate surface design with current iterations updating the look by stylizing motifs and adding timely color combinations; flowers and plants indigenous to a particular place and thoughtfully depicted describe an irresistible story. Whether influenced by classic design or images of nature, designers are creating fresh works to bring the outdoors inside.

LOOKS

Faultless florals are joined by imperfect, naturalistic alternatives

Overlapping leaves

Layered color with trapped edges

Textured, dotted & striated grounds

Silhouetted florals against textured grounds

Free wildflower looks

Flattened or dried flowers & leaves

Soft renderings from ikat to watercolor

Lino cut & woodblock artwork



Mazy Path



York Wallcoverings



Serena & Lily



Galbraith & Paul

Theme

the Storytellers

The cave paintings at Lascaux were arguably the first wallcovering designs, and humans have been adorning their walls and surroundings with soulful pictures of what they see around them ever since. From watercolored snakes to black sheep and illustrated faces to deftly rendered historic scenes, these witty conversationals are gaining importance. Toiles are reimagined, depicting current culture with a contemporary spin. Traditional motifs like trellises, pineapples, and animal prints easily add wit and character to a room. The stories these imaginative designs evoke memories of happy times or fantasies about how we want to live.

LOOKS

- Rich crewel & embroidery over prints
- Carefully spaced motifs of silhouetted animals
- Dream-like backgrounds
- Animal skins
- Contemporary, tongue-in-cheek toiles
- Quirky illustrated motifs
- Landscape & cityscape patterns
- Fantastical & realistic fauna

Eskayel





Eskayel



Travers



Flavor Paper x Andy Warhol



Aux Abris

Theme

the Crisp Classicists

Tailored and refined, the classic designs shown here have an unmistakable iconic appeal: the blue and white patterns inspired by Ming porcelain, the beautifully rendered and clean botanical prints set atop fine taffetas and chintzes, the delicately embroidered tapes. Brightly colored, French-influenced designs so popular with the late 19th-century Carriage Trade are still beloved today and are interpreted through a preppy American lens. Freshness imbues these designs with a snappy and well-defined crispness. While the look might include varied influences including ikats, palampores, and paisleys, it's always pulled together and polished.

LOOKS

Trellises & boxwood hedges
Cabbage roses & other realistic blossoms
Fresh green foliage
Floral stripes
Swags & bows
Careful renderings & fine engravings
Happy colors
White & ivory grounds

Clarence House





Pomegranate from the Matouk Schumacher Collection



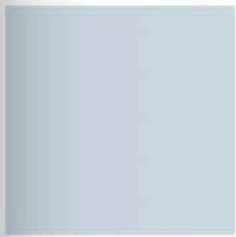
Martyn Lawrence Bullard



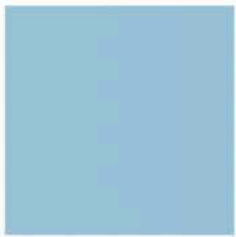
Mary McDonald for Schumacher



Galbraith & Paul



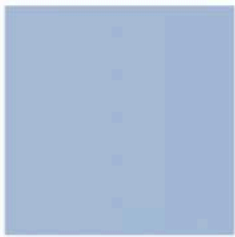
HEX #C9D6DD



HEX #8DBC4



HEX #3B6A90



HEX #9EB4D4



HEX #5876A7



HEX #42455D



Odegard



Brook Perdigon

Shade

Forever Blue

- The iconic staying power of sky, indigo and navy blue is unmistakable.
- Blue-and-white dominates on the traditional side, while contemporary design is often more full coverage.
- Mixing teal cast tones with true blue and purple-leaning periwinkle adds interest.



Kelly Wearstler for Lee Jofa



Brunschwig & Fils



Matouk

the TEXTILE EYE



Galbraith & Paul



Charlotte Moss for Pickard China