

# hospitality design

february/march 2025 [hospitalitydesign.com](http://hospitalitydesign.com)



breaking ground  
the development issue

hd Presenter of  
expo+  
conference

Subtle patterns bring a timeless style

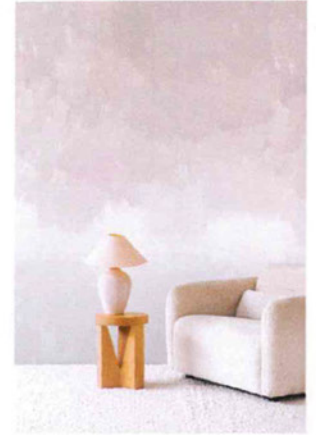
By Alissa Ponchione



1



2



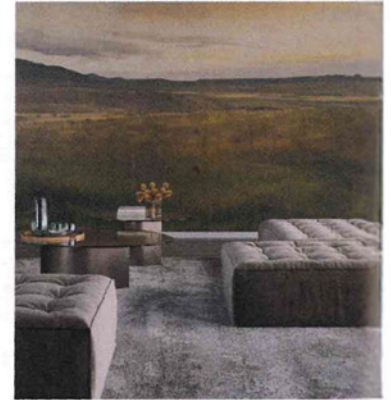
3



4



5



6

**1** Handpainted by **Astek's** in-house design team, the **Gesture 5** mural is part of the **Resonance** collection. Available in three colorways, including **Amber** (shown), it captures the fluidity of thought through oversized brushstrokes. [ASTEK.COM](http://ASTEK.COM)

**2** The **Merino** range from **Arte** comprises **Lana**, a highly detailed rendering of a densely woven wool, where the soft hues add depth to create a wallpaper with a realistic look in 13 colorways. [ARTE-INTERNATIONAL.COM](http://ARTE-INTERNATIONAL.COM)

**3** Crafted on nonwoven pearl paper with a subtle luster, **Canopy** by **Emma Hayes** is inspired by forest canopies, capturing the ethereal play of light and shadow via delicate brushstrokes. [EMMAHAYES.CO.NZ](http://EMMAHAYES.CO.NZ)

**4** Available in four earthy colorways, **Vedia** from **Koroseal** is a digitally printed wallcovering featuring a biophilic-informed large-scale leaf pattern that brings the outdoors in. [KOROSEAL.COM](http://KOROSEAL.COM)

**5** **Timantti**, the breathable and durable woven fabric wallcovering from **Maya Romanoff**, shines in eight colorways on a non-vinyl alternative. At the heart of the line is **XPE Polyfabric**, a material that redefines resilience and tenacity. [MAYAROMANOFF.COM](http://MAYAROMANOFF.COM)

**6** Range from **Phillip Jeffries** flaunts rolling hills and clouds across a scenic mural in **Sepia** on **Marshmallow Manila Hemp**. The large-scale landscape is printed on wallcoverings, including performance vinyl and PVC-free options. [PHILLIPJEFFRIES.COM](http://PHILLIPJEFFRIES.COM)