

INTUITIVE DESIGN

aspire

design home

THE NEW MIND SCAPE

*a panorama of imagination,
a realm where thoughts and
ideas exist*

HAWAII FRANCE SWEDEN BROOKLYN CALIFORNIA SOUTH AFRICA BALTIMORE DALLAS



MOUVEMENTS MODERNES AND GALERIE GABRIEL Edition Néotù
KOLTON CHAIRS BY PIERRE STAUDENMEYER galeriegabriel.com

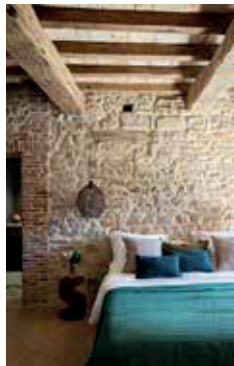
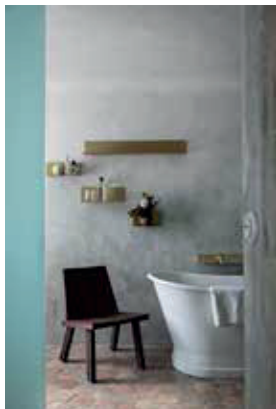
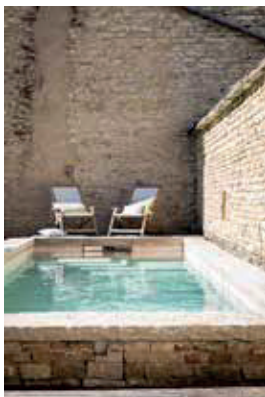
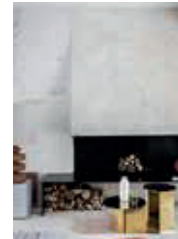
travel

Wild at Heart

BURGUNDY REGION OF FRANCE

“Wine is bottled poetry,” wrote Scottish novelist and poet Robert Louis Stevenson, but at **La Maison de Pommard**, it is much more – an invitation to pause, to savor, to belong. Tucked amid the undulating vineyards of Burgundy, this guesthouse is proof of the region’s legendary viticultural heritage, yet it is no mere homage to the past. Instead, under the deft touch of **Isabelle de Montille**, a descendant of one of France’s most esteemed winemaking families, La Maison de Pommard reinvents the art of hospitality with a subtle blend of modernity, tradition and an unwavering commitment to conviviality.

If wine is bottled poetry, then La Maison de Pommard is its perfect stanza – an ode to hospitality, to craftsmanship and to the slow, exquisite pleasure of truly being present.





**HAMMERTON
STUDIO
CUMULUS**
SINGLE SCONCE
AND FLUSH MOUNT
AVAILABILITY
studio.hammerton.com

AFTERNOONS UNFOLD WITH LEISURELY WALKS OR BIKE RIDES ALONG LA VOIE DES VIGNES, A SCENIC ROUTE THREADING THROUGH SOME OF BURGUNDY'S MOST REVERED VILLAGES. PERHAPS A TASTING AT A NEARBY DOMAINE, A VISIT TO THE HISTORIC HEART OF BEAUNE OR A QUIET HOUR IN THE GUESTHOUSE'S WALLED GARDEN, WHERE BIRDS FLIT BETWEEN THE BRANCHES AND THE WORLD MOMENTARILY STANDS STILL. "I WANT MY GUESTS TO REMEMBER THE FEELING OF BEING AT HOME, BUT BETTER," DE MONTILLE MUSES. "TO TAKE THE TIME TO OBSERVE, TO TASTE, TO SHARE. TO LET THE RHYTHM OF BURGUNDY SEEP INTO THEIR BONES."

TEXT **CARA GIBBS** PHOTOGRAPHY **YANN DERET**
COLLABORATION **ISABELLE DE MONTILLE**
AND ARCHITECT **EMANUELE SALINI**



GOLDEN CLOUD

OCHRE X ANNE CORBIERE TEXTILES

TEXTILE DESIGNER AND WEAVER **ANNE CORBIERE** IS NO STRANGER TO CREATIVE COLLABORATION. HER NOTABLE CAREER INCLUDES PROJECTS IN CONCERT WITH POWERHOUSE FASHION BRANDS LIKE CHANEL AND BALENCIAGA, AS WELL AS A PERSONAL PENCHANT FOR INNOVATIVE MATERIALS. HER LATEST ENDEAVOR IS A COMMISSION FROM OCHRE TO HAND WEAVE A UNIQUE METALLIC FABRIC FOR A NEW VERSION OF THE COMPANY'S ETHEREAL CLOUD SHADE. THE GOLDEN NATURE OF THE NEW PIECE REFLECTS CORBIERE'S OWN CREATIVE CATALOG AS SHE HAS OFTEN TURNED TO THE SHINING HUE FOR ITS ABILITY TO EVOKE THE RARE AND PRECIOUS. ochre.net



**MAYA ROMANOFF
GILDED CLOTH™
WALLCOVERING
COLLECTION**
FEATURING METAL
LEAF HAND-INLAID
ON A DURABLE
CANVAS FABRIC
mayaromanoff.com



**ARTEMEST
GOLDEN WAVES**
SIDE TABLE
BY DAL FURLO
artemest.com