

Weathered Metals II™

Type II Vinyl
Maya Romanoff 54™



Weathered Metals II™



MR-FV-16X15-O Palladium

MR-FV-16X14-O Titanium

MR-FV-16033-S Chromium



MR-FV-16506-S Blue Quartzite

MR-FV-16055-S Iridium

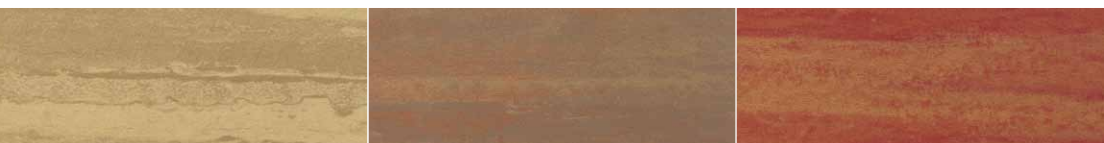
MR-FV-16176-P Platinum



MR-FV-16034-S Gilded Pewter

MR-FV-16705-G Patina

MR-FV-16036-G Gilded Copper



MR-FV-16X10-G Luxe Gold

MR-FV-16035-G Gilded Bronze

MR-FV-16245-G Luxe Red

Maya Romanoff's classic hand-painted design interpreted in durable Type II Vinyl. Weathered Metals II was designed with a 54" wide by 36" high repeat and drop side match, creating a large-scale, seemingly random pattern. The product has an all-over emboss and three layers of metallic print effects which provide striking elegance, visual depth, and a seamless installation.

Width 56" untrimmed (142.2 cm)
13.5 sq ft/yd (1.25 sq m/yd)

Roll Size 30 yd (27.4 m)

Minimum Order 21 yd (19.2 m)

Order Increments 3 yd (2.7 m)

Repeat 54" W × 36" H (137.2 × 91.4 cm) Side match
requires half drop

Custom Color 1,000 yd min. order (914.4 m)

Custom Length 1,000 yd min. order (914.4 m)

Content Type II 20 oz. vinyl, Non-woven backing,
ASTM E84 Class A

♻️ 30-60% Recycled content

Installation Image: Gilded Pewter

Lamp: Interior Crafts Console: CAI Designs



SAMPLES@MAYAROMANOFF.COM