

STOP!

DO NOT INSTALL UNTIL YOU HAVE READ THESE INSTRUCTIONS.

Call Customer Service at **1-800-465-6909**
immediately if you encounter any difficulties.

Guidelines for Installation on Drywall

WEATHERED METALS II™

Type II Vinyl Wallcovering (MR-FV-16 series)

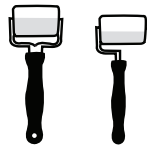
Consult Customer Service before you begin application on surfaces other than drywall.

NOTE: Materials may display certain irregularities that are inherent to the manufacturing process.

RECOMMENDED TOOLS



Soft-bristled
nylon brush



Seam roller &
corner seam roller



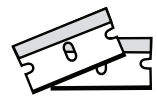
Plastic smoother



Sponge



Soft cloth



Razor blades



Maya Romanoff
Clear Stripable
Adhesive MR-RA-888
& 1/2" nap roller
or comparable



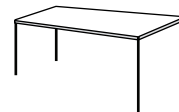
Roman Pro-977
Ultra Prime
Primer or
comparable



Clean water



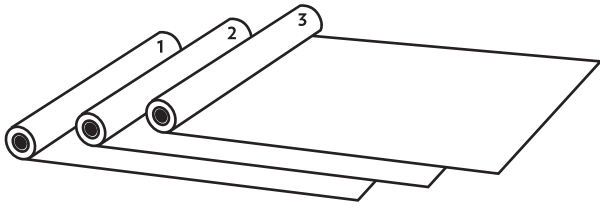
Steel straight edge



Table

MAYA ROMANOFF

1 GENERAL GUIDELINES



Product has been pre-graded; however, you must still grade for color flow within your installation.

Inspect goods carefully.

Confirm you have the correct quantity and color of product before installing. Additional yardage from this dye lot may not be available.

No allowances will be made after three (3) drops are installed.

No returns on cut goods.

No claims allowed for labor charges or consequential damages, under any conditions.

No claims allowed if lighting in area where product is hung is not finished/fully installed.

Product is not guaranteed against fading or color change.

Store material between 60° - 85° F in a dry place.

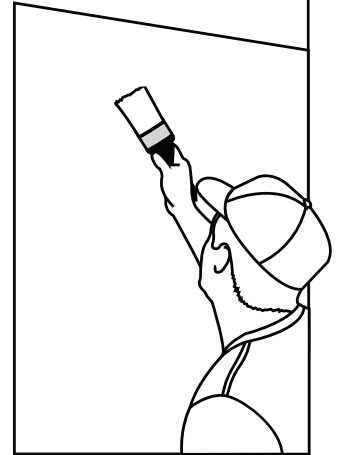
2 WALL PREPARATION

Prior to installation on new drywall, paint the walls with Roman Pro-977 Ultra Prime Primer or comparable tinted close to the color of your product.

Walls should be mirror smooth (smooth and sanded).

Do not use sealing primer/do not install on sealed walls (no eggshell, satin or semi-gloss paints).

Walls must be completely dry before installation can begin.



3 PASTING

Use Maya Romanoff Adhesive MR-RA-888 (Clear Strippable) or comparable.

Apply a generous, even coat of adhesive to backside of product and let relax.

Typical relaxing time is 3-5



minutes, until adhesive tacks up. Perform a test on a small strip to determine appropriate relaxing time

Allow the paste to soak into each sheet for the appropriate time before hanging in order to avoid bubbling, shrinking & seam opening.

Do not crease the wallcovering.

Do not get paste on the face of the product. **If paste gets on the face of the product, do not scrub and do not rub.** Instead, immediately and gently wipe clean with a soft, damp cloth. Do not use paper towel, wet or dry, on the product.

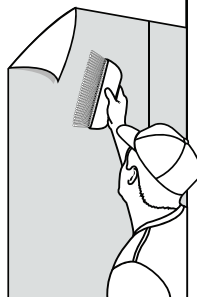
4 HANGING

Wallcovering rolls are marked numerically. Please hang in sequence.

Material can be hung with a random match or side-match. If a side-match is desired, product repeat requires a half-drop installation. See diagrams on page 4.

Carefully overlap panels to align and match up the pattern.

Apply product to the wall using a soft-bristled nylon brush.



DO NOT USE A STIFF BRUSH.

Gently smooth product with a plastic smoother to remove bubbles.

A seam roller may be used to set seams. Please take proper precaution.

Use a corner seam roller to ease the material into moldings, casework, etc. prior to cutting the top or bottom of product.

Slight color and/or pattern match variation may occur.

5 TRIMMING

Product is approximately 56" wide untrimmed.

Side match (if desired) requires half-drop.

Double-cut on the wall. Trim approximately 1 inch off each edge to match pattern and achieve 54" width.

Use a very sharp, single-edge razor blade. Use a new razor blade for each cut.

6 CARE & CLEANING

Avoid direct, bright or reflected sunlight. Our wallcoverings are not guaranteed against fading or color change.

STOP!

DO NOT INSTALL UNTIL YOU HAVE READ THESE INSTRUCTIONS.

Call Customer Service at **1-800-465-6909** immediately if you encounter any difficulties.

Maya Romanoff wallcovering materials are primarily formulated for dry-use areas.

Before cleaning any product, test first on a small inconspicuous area.

Avoid getting the wallcovering excessively wet.

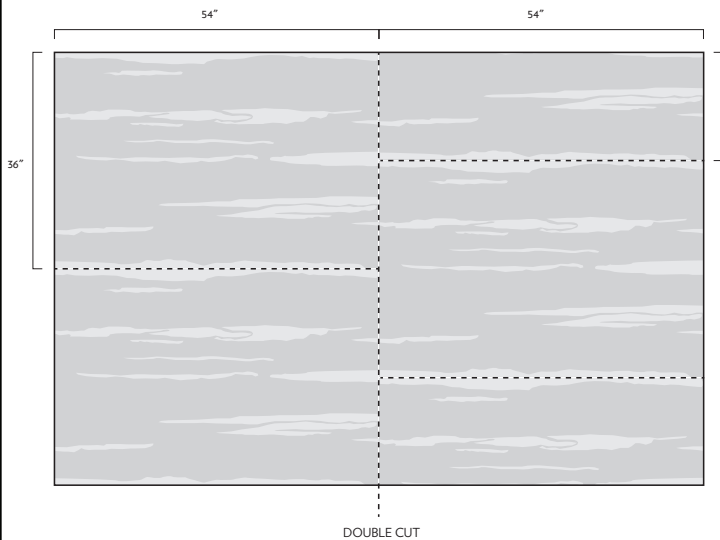
Do not use cleaners, solvents, or chemicals of any kind to clean Maya Romanoff products.

This product may be cleaned by blotting the soiled area with a soft, clean cloth dampened with a weak solution of a mild, clear liquid detergent. Dry with a soft cloth.

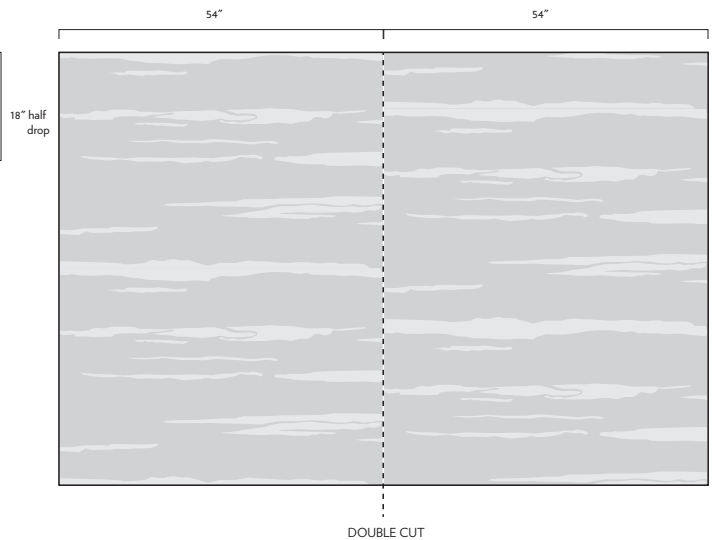
7 TRIMMING DIAGRAM

REPEAT: Approx. 36" H x 54" W

SIDE-MATCH
(requires half drop)



RANDOM MATCH



MAYA ROMANOFF