

STOP!

DO NOT INSTALL UNTIL YOU HAVE READ THESE INSTRUCTIONS.

Call Customer Service at **1-800-465-6909**
immediately if you encounter any difficulties.

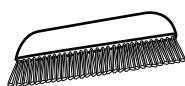
Guidelines for Installation on Drywall

AJIRO Vineyard™ Hand Inlaid Wood Veneer (MR-AV series)

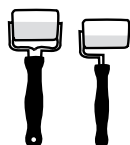
Consult Customer Service before you begin application on surfaces other than drywall.

NOTE: This is a handmade wallcovering. Materials may display certain irregularities that are inherent to the manufacturing process.

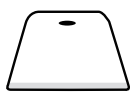
RECOMMENDED TOOLS



Soft-bristled
nylon brush



Seam roller &
corner seam roller



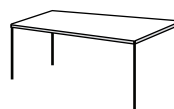
Plastic
smoother



Sponge



Soft cloth



Table



Optional
Water-Based
Polyurethane
*Available from
Benjamin Moore*



Maya Romanoff
Clear Stripabble
Adhesive MR-RA-888
& 1/2" nap roller



Maya Romanoff
PRIME-TIME™
Primer MR-RA-977



Clean water



Razor blades



Iron



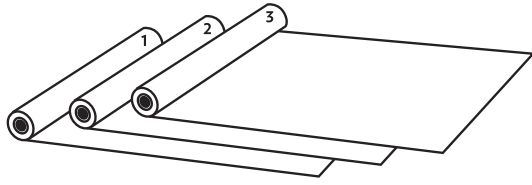
Steel
straight edge



Heavy-Duty
Lining paper
*Available from
Maya Romanoff*

MAYA ROMANOFF

1 GENERAL GUIDELINES



Product has been pre-graded; however, you must still grade for color flow within your installation.

Inspect goods carefully.

Confirm you have the correct quantity and color of product before installing. Additional yardage from this dye lot may not be available.

No allowances will be made after three (3) drops are installed.

No returns on cut goods.

No claims allowed for labor charges or consequential damages, under any conditions.

No claims allowed if lighting in area where product is hung is not finished/fully installed.

Product is not guaranteed against fading or color change.

Store material between 60° - 85° F in a dry place.

3 PAPER PREPARATION

Before pasting backside of paper, dampen the face and back of the product with a wet sponge. Do not soak. The purpose is to relax and flatten the product.

Let relax for 15-20 minutes.

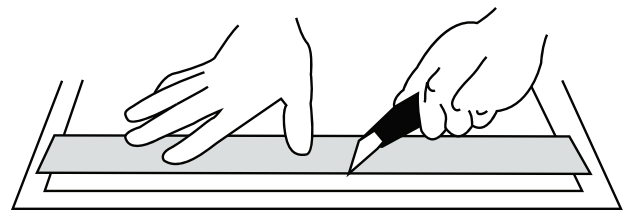
Repeat relaxing process until product lies flat when dry.

4 TRIMMING

Trim product after relaxing.

This product can be trimmed on the table OR double-cut on the wall.

Use a very sharp, single-edge razor blade.
Use a new razor blade for each cut.



Due to the handmade nature of Ajiro, there may be slight variation in the width of the roll. Trim a small amount to minimally affect the pattern repeat.

2 WALL PREPARATION

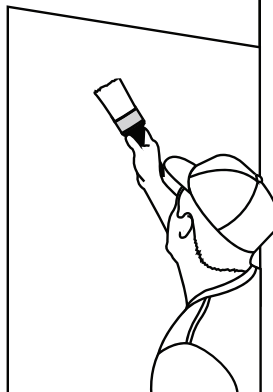
Prior to installation on new drywall, paint the walls with Maya Romanoff PRIME-TIME™ Primer (MR-RA-977) tinted close to the color of your product.

Walls should be mirror smooth (smooth and sanded).

Do not use sealing primer/do not install on sealed walls (no eggshell, satin or semi-gloss paints).

If walls are already sealed or have imperfections, we recommend hanging heavy-duty lining paper (available from Maya Romanoff) prior to installing this product.

Walls must be completely dry before installation can begin.



5 PASTING

Use Maya Romanoff Adhesive MR-RA-888 (Clear Strippable)

Pre-paste the wall and allow 20-30 minutes for paste to dry before hanging.

The back of the product should not be wet prior to pasting, but it may feel slightly damp to the touch.

Apply a generous, even coat of adhesive to backside of product and let relax.

Typical relaxing time is 8-10 minutes. Perform a test on a small strip to determine appropriate relaxing time.

Allow the paste to soak into each sheet for the appropriate time before hanging in order to avoid bubbling, shrinking & seam opening.



Do not crease the wallcovering.

Do not get paste on the face of the product. **If paste gets on the face of the product, do not scrub and do not rub.** Instead, immediately and gently wipe clean with a soft, damp cloth. Do not use paper towel, wet or dry, on the product.

6 HANGING

Pattern is directional. Do not reverse hang.

Side-match is approximate. Ensure the pattern is registered as closely as possible. See diagram on page 4 for pattern side-match.

Be sure the grain on both sides of each seam line run in opposite directions.



Apply product to the wall using a soft-bristled nylon brush.

DO NOT USE A STIFF BRUSH.

Gently smooth product with a plastic smoother to remove bubbles.

A seam roller may be used to set seams. Please take proper precaution.

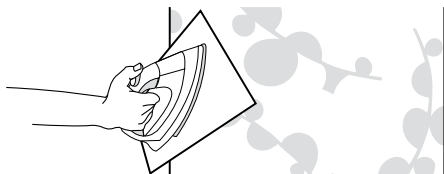
Use a corner seam roller to ease the material into moldings, casework, etc. prior to cutting the top or bottom of product.

This product is handmade. Slight color and/or pattern match variation may occur.

7 REPAIRING EDGES OF INLAY

Product must be completely dry before repairing.

Edges of inlay pattern may lift from the paper backing during or after installation. Lifted edges can be repaired by applying heat to the area. Apply pressure with an iron on a warm setting. Keep a clean piece of white paper between the iron and the face of the product.



DO NOT PLACE IRON DIRECTLY ONTO THE FACE OF PRODUCT.

8 WRAPPING OUTSIDE CORNERS

Be sure corners are smooth and square before beginning.

Pre-paste the area to be wrapped with Maya Romanoff Adhesive MR-RA-888 prior to installation and let it dry.

The section to be wrapped should have as large a portion of the inlay motif as possible on each side of the corner.

Before pasting backside of paper, dampen the face and back of the product with a wet sponge. Do not soak. Allow to relax.

Check the flexibility of the product on the corner area. If there is resistance, allow additional relaxing time. A second pasting and booking may be required.

Do not force the product to wrap the corner. If the product is not ready to bend, it may split.

When it is ready, apply the product to the wall.

9 PROTECTIVE COATING APPLICATION INSTRUCTIONS

For a 25% upcharge on your order, Maya Romanoff can apply an additional protective coating to this product.

OR

A thin layer of water-based polyurethane may be applied to the installed wallcovering 48 hours after product installation (wallcovering adhesive must be dry). This will form a barrier coat and help prevent moisture from penetrating the wood inlay.

We recommend Benwood Acrylic Polyurethane (available through Benjamin Moore) or a good quality, water-based acrylic polyurethane. Different finishes are available.

Perform a test on scrap material before applying to the installed surface.

Apply a generous coat to installed product with a foam or nap roller.

STOP!

DO NOT INSTALL UNTIL YOU HAVE READ THESE INSTRUCTIONS.

Call Customer Service at 1-800-465-6909
immediately if you encounter any difficulties.

Smooth polyurethane with a 4" foam brush.

After smoothing once, go back over the area several times before it is dry, with a softer touch each time. This allows for even polyurethane application and catches any drips.

If extra protection is desired, re-apply a second coat after another 48 hours of curing.

Consult the polyurethane manufacturer's application guidelines. Maya Romanoff is not responsible for unsatisfactory results.

Maya Romanoff wallcoverings are primarily formulated for dry-use areas. The above guidelines are not a guarantee of waterproofing.

10 CARE & CLEANING

Avoid direct, bright or reflected sunlight. Our wallcoverings are not guaranteed against fading or color change.

Maya Romanoff wallcovering materials are primarily formulated for dry-use areas.

Before cleaning any product, test first on a small inconspicuous area.

Avoid getting the wallcovering excessively wet.

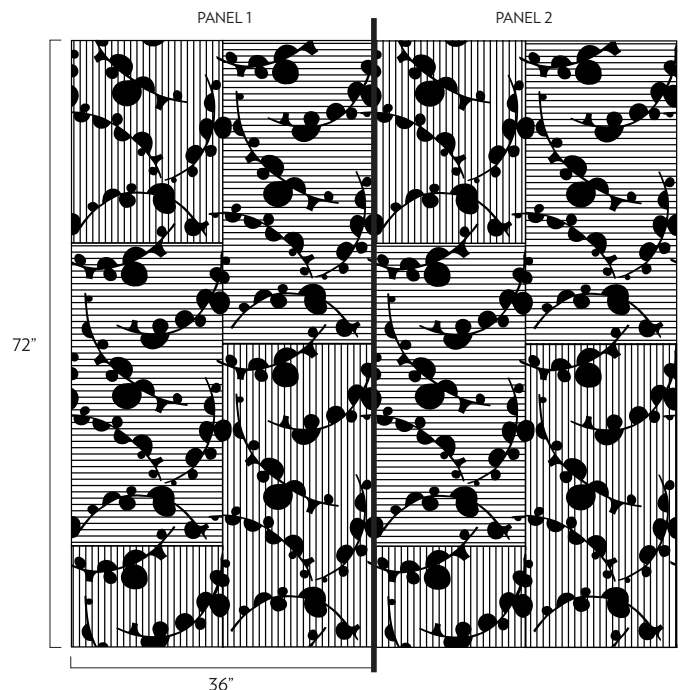
Do not use cleaners, solvents, or chemicals of any kind to clean Maya Romanoff products.

This product may be cleaned by blotting the soiled area with a soft, clean cloth dampened with a weak solution of a mild, clear liquid detergent. Dry with a soft cloth.

11 PATTERN REPEAT & SIDE MATCH

Repeat size: 36" wide x 72" high (91.4 x 182.9 cm)

Pinstripes on diagram represent direction of wood grain.



MAYA ROMANOFF