

# ARCHITECTURAL DIGEST

THE INTERNATIONAL DESIGN AUTHORITY

MAY 2015

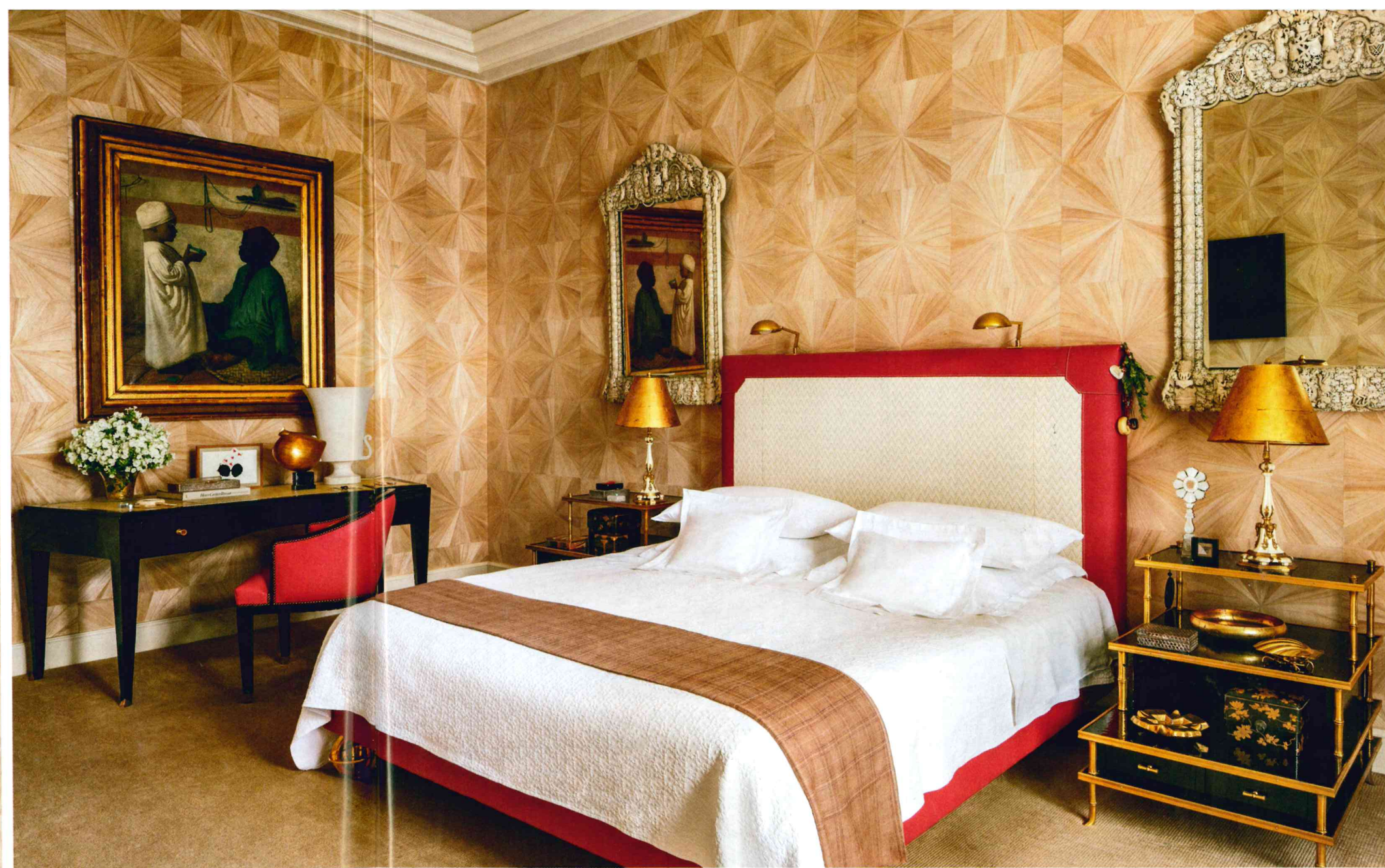


## Inspiring Style Around the World

**PLUS:**  
**THE ALLURE  
OF CUBA**



"THIS APARTMENT IS ME,"  
LINDA PINTO SAYS. "AND  
YET ALBERTO IS PRESENT  
EVERYWHERE IN IT."



*Clockwise from left:*  
An Art Deco-style armchair,  
custom made by Atelier  
Seigneur, sits in the master  
bedroom, which is sheathed  
in a marquetry wall covering  
by Maya Romanoff. The bed,  
designed by Cabinet Alberto  
Pinto and fabricated by  
Atelier Seigneur, is flanked  
by vintage Jansen side  
tables and 19th-century  
ivory mirrors. Paneled in Art  
Deco mirror, the master  
bath features a midcentury  
chauffeuse and an antique  
Japanese lacquer side table.





## SOURCES

For a more detailed version of Sources, go to [archdigest.com/sources/may15](http://archdigest.com/sources/may15).

Items pictured but not listed here or on [archdigest.com](http://archdigest.com) are not sourceable. Items similar to vintage and antique pieces shown are often available from the dealers listed.

(T) means item available only to the trade.

### COMING HOME

PAGES 134-45: Birr Castle; [birrcastle.com](http://birrcastle.com).

### TOUR DE FORCE

PAGES 146-53: Architecture by Steven Harris Architects; [stevenharrisarchitects.com](http://stevenharrisarchitects.com). Interiors by Rees Roberts + Partners; [reesroberts.com](http://reesroberts.com). PAGES 148-49: In garden, chairs by Sol y Luna from Design Within Reach; [dwr.com](http://dwr.com). On stacked-stone banquette, cushions of Rough 'n Rowdy fabric, in sea salt, by Perennials (T); [perennialsfabrics.com](http://perennialsfabrics.com). In lounge, on banquette and for pillows, Boardwalk fabric, in tusk, by Holly Hunt (T); [hollyhunt.com](http://hollyhunt.com). Brushed-chrome-and-travertine low table designed by Rees Roberts + Partners; [reesroberts.com](http://reesroberts.com). PAGE 150: Vintage chairs by Eero Saarinen for Knoll; [knoll.com](http://knoll.com). PAGE 151: In guest room, Daphne ikat pillow by Madeline Weinrib; [madelineweinrib.com](http://madelineweinrib.com).

### SETTING THE STAGE

PAGES 154-61: Interiors by Studio Peregalli; [studioperegalli.com](http://studioperegalli.com).

### GRAPHIC CHARGE

PAGES 162-69: Interiors by Veere Grenney Assoc.; [veeregrenney.com](http://veeregrenney.com). PAGES 162-63: Mantel by Jamb; [jamb.co.uk](http://jamb.co.uk). Custom-made carpet by Luke Irwin available from Patterson Flynn Martin (T); [pattersonflynnmartin.com](http://pattersonflynnmartin.com). On walls, Glicine fabric, in red, by Fortuny (T); [fortuny.com](http://fortuny.com). PAGE 166: In game area, mantel and grate by Jamb; [jamb.co.uk](http://jamb.co.uk). In hallway, Pipe pendant lights by Tom Dixon from YLighting; [ylighting.com](http://ylighting.com). In TV area, sofa by B&B Italia; [bebitalia.com](http://bebitalia.com). Bespoke carpet by Luke Irwin available from Patterson Flynn Martin (T); [pattersonflynnmartin.com](http://pattersonflynnmartin.com). PAGE 167: Fireplace surround and mantel by Jamb; [jamb.co.uk](http://jamb.co.uk). PAGE 168: In study area, Frank Lloyd Wright chairs by Cassina; [cassina.com](http://cassina.com). Bespoke carpet by Luke Irwin available from Patterson Flynn Martin (T); [pattersonflynnmartin.com](http://pattersonflynnmartin.com). Custom-made desk, paneling, and cabinetry by Christopher Bell Ltd.;

[christopherbell.co.uk](http://christopherbell.co.uk). In master bath, Lonsdale tub by the Water Monopoly; [thewatermonopoly.com](http://thewatermonopoly.com). PAGE 169: Pillows in Desert Cloth fabric, in navy, by de Le Cuona (T); [delecuona.com](http://delecuona.com). Daybed by Eileen Gray from Avenue Road; [avenue-road.com](http://avenue-road.com). Moro chair by Fornasetti from Barneys New York; [barneys.com](http://barneys.com). Custom-made rug by Luke Irwin available from Patterson Flynn Martin (T); [pattersonflynnmartin.com](http://pattersonflynnmartin.com).

### ACCOUNT BALANCE

PAGES 170-77: Interiors by Conceitos de Arte; [conceitosdearte.pt](http://conceitosdearte.pt).

### HONOR GUARD

PAGES 178-89: Interiors by Sardar Design Studio; [sardardesign.com](http://sardardesign.com). PAGE 188: In bedroom, Tizio lamp by Artemide; [artemide.us](http://artemide.us). In bath, tub fittings by Lefroy Brooks; [lefroymartins.com](http://lefroymartins.com). PAGE 189: Sconces by RH; [rh.com](http://rh.com). Mirror, sink fittings, and tub fittings by Lefroy Brooks; [lefroymartins.com](http://lefroymartins.com).

### SISTER ACT

PAGES 190-97: Interiors by Cabinet Alberto Pinto; [albertopinto.com](http://albertopinto.com). PAGES 190-91: Custom-made rug by Tai Ping (T); [taipingcarpets.com](http://taipingcarpets.com). PAGES 192-93: In living room, on walls and ceiling, pearlescent finish by Atelier Mèriguet-Carrère; [ateliermeriguet.fr](http://ateliermeriguet.fr). In library/dining room, red-and-black-lacquer chairs by Patrick Gaguech for Nimrod; [patrickgaguech.com](http://patrickgaguech.com). Custom-made table by Luis Rossi for LxRossi; [lxrossi.com](http://lxrossi.com). PAGE 194: Bel-Air Retro Fifties collection table and chairs by Jolina Products; [jolina.com](http://jolina.com). Château 150 range and Hotte Château 150 hood by La Cornue; [lacornueusa.com](http://lacornueusa.com). PAGE 195: In powder room, carved-plaster walls by Atelier Mèriguet-Carrère; [ateliermeriguet.fr](http://ateliermeriguet.fr). Washstand, sink, and fittings by Volevatch; [volevatch.fr](http://volevatch.fr). In family room, on sofa and ottoman, Zambesi fabric by Clarence House (T); [clarencehouse.com](http://clarencehouse.com). On armchair, Klee fabric by Clarence House (T). Custom-made cocktail table by Galerie Negropontes; [negropontes-galerie.com](http://negropontes-galerie.com). PAGES 196-97: In master bedroom, on walls, Ajio Sunburst wall covering by Maya Romanoff (T); [mayaromanoff.com](http://mayaromanoff.com). Bed designed by Cabinet Alberto Pinto; [albertopinto.com](http://albertopinto.com), and fabricated by Atelier Seigneur; [seigneurupholsterer.com](http://seigneurupholsterer.com). □

ARCHITECTURAL DIGEST AND AD ARE REGISTERED TRADEMARKS OF ADVANCE MAGAZINE PUBLISHERS INC. COPYRIGHT © 2015 CONDÉ NAST. ALL RIGHTS RESERVED. PRINTED IN THE U.S.A.

VOLUME 72, NO. 5, ARCHITECTURAL DIGEST (ISSN 0003-8520) is published monthly by Condé Nast, which is a division of Advance Magazine Publishers Inc. PRINCIPAL OFFICE: Condé Nast, 1 World Trade Center, New York, NY 10007. S. I. Newhouse, Jr., Chairman; Charles H. Townsend, Chief Executive Officer; Robert A. Sauerberg, Jr., President; David E. Geithner, Chief Financial Officer; Jill Bright, Chief Administrative Officer. Periodicals postage paid at New York, NY, and at additional mailing offices. Canada Post Publications Mail Agreement No. 40844503. Canadian Goods and Services Tax Registration No. 12342885-RT0001. Canada Post: Return undeliverable Canadian addresses to P.O. Box 874, Station Main, Markham, ON L3P 8L4.

POSTMASTER: Send all UAA to CFS. (See DIM 507.1.5.2). NON-POSTAL AND MILITARY FACILITIES: Send address corrections to ARCHITECTURAL DIGEST, P.O. Box 37641, Boone, IA 50037-0641. FOR SUBSCRIPTIONS, ADDRESS CHANGES, ADJUSTMENTS, OR BACK ISSUE INQUIRIES: Please write to ARCHITECTURAL DIGEST, P.O. Box 37641, Boone, IA 50037-0641, call 800-365-8032, or e-mail [subscriptions@archdigest.com](mailto:subscriptions@archdigest.com). Please give both new address and old address as printed on most recent label. Subscribers: If the Post Office alerts us that your magazine is undeliverable, we have no further obligation unless we receive a corrected address within one year. If during your subscription term or up to one year after the magazine becomes undeliverable, you are ever dissatisfied with your subscription, let us know. You will receive a full refund on all unmailed issues. First copy of new subscription will be mailed within four weeks after receipt of order. Address all editorial, business, and production correspondence to ARCHITECTURAL DIGEST, 1 World Trade Center, New York, NY 10007. For reprints, please e-mail [reprints@condenast.com](mailto:reprints@condenast.com) or call Wright's Media, 877-652-5295. For reuse permissions, please e-mail [contentlicensing@condenast.com](mailto:contentlicensing@condenast.com) or call 800-897-8666. Visit us online at [archdigest.com](http://archdigest.com).

To subscribe to other Condé Nast magazines, visit [condenastdigital.com](http://condenastdigital.com). Occasionally we make our subscriber list available to carefully screened companies that offer products and services that we believe would interest our readers. If you do not want to receive these offers and/or information, please advise us at P.O. Box 37641, Boone, IA 50037-0641 or call 800-365-8032.

ARCHITECTURAL DIGEST IS NOT RESPONSIBLE FOR THE RETURN OR LOSS OF, OR FOR DAMAGE OR ANY OTHER INJURY TO, UNSOLICITED MANUSCRIPTS, UNSOLICITED ARTWORK (INCLUDING, BUT NOT LIMITED TO, DRAWINGS, PHOTOGRAPHS, AND TRANSPARENCIES), OR ANY OTHER UNSOLICITED MATERIALS. THOSE SUBMITTING MANUSCRIPTS, PHOTOGRAPHS, ARTWORK, OR OTHER MATERIALS FOR CONSIDERATION SHOULD NOT SEND ORIGINALS UNLESS SPECIFICALLY REQUESTED TO DO SO BY ARCHITECTURAL DIGEST IN WRITING. MANUSCRIPTS, PHOTOGRAPHS, AND OTHER MATERIALS SUBMITTED WILL NOT BE RETURNED.

PROMOTION

## ARCHITECTURAL DIGEST



PIETER ESTERSON

## AD DesignFile

Packed with thousands of spectacular images from the pages of *Architectural Digest*, AD DesignFile is the ultimate online resource for finding and saving your favorite decorating and renovation ideas. Search by room, style, color, or designer, or browse galleries curated by AD editors. Click and get inspired!

Search.  
Save.  
Share.

DESIGNFILE.ARCHDIGEST.COM