

STOP!

DO NOT INSTALL UNTIL YOU HAVE READ THESE INSTRUCTIONS.

Call Customer Service at **1-800-465-6909**
immediately if you encounter any difficulties.

Guidelines for Installation on Drywall

GROOVE-V™ TYPE II

Vinyl Wallcovering

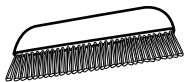
(MR-FV-13, MR-FV-14 and MR-FV-15 series)

THIS IS NOT A TYPICAL VINYL INSTALLATION.

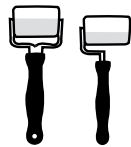
Consult Customer Service before you begin application on surfaces other than drywall.

NOTE: Materials may display certain irregularities that are inherent to the manufacturing process.

RECOMMENDED TOOLS



Soft-bristled
nylon brush



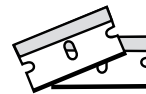
Seam roller &
corner seam roller



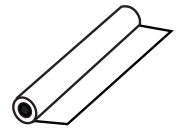
Sponge



Soft cloth



Razor blades



Heavy-Duty
Lining paper
*Available from
Maya Romanoff*



Maya Romanoff
Clear Stripabble
Adhesive MR-RA-888
& 1/2" nap roller



Maya Romanoff
PRIME-TIME™
Primer MR-RA-977



Clean water



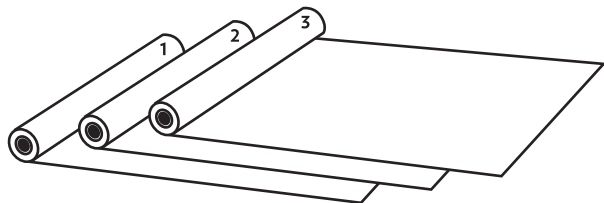
Steel straight edge



Table

MAYA ROMANOFF

1 GENERAL GUIDELINES



Product has been pre-graded; however, you must still grade for color flow within your installation.

Inspect goods carefully.

Confirm you have the correct quantity and color of product before installing. Additional yardage from this dye lot may not be available.

No allowances will be made after three (3) drops are installed.

No returns on cut goods.

No claims allowed for labor charges or consequential damages, under any conditions.

No claims allowed if lighting in area where product is hung is not finished/fully installed.

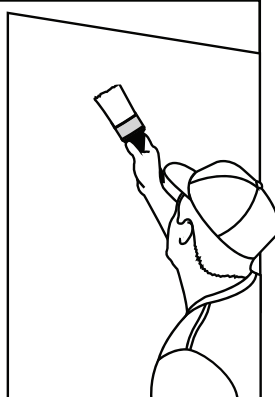
Product is not guaranteed against fading or color change.

Store material between 60° - 85° F in a dry place.

2 WALL PREPARATION

Prior to installation on new drywall, paint the walls with Maya Romanoff PRIME-TIME™ Primer (MR-RA-977) tinted close to the color of your product.

Walls should be mirror smooth



(smooth and sanded).

Do not use sealing primer/do not install on sealed walls (no eggshell, satin or semi-gloss paints).

If walls are already sealed or have imperfections, we recommend hanging heavy-duty lining paper (available from Maya Romanoff) prior to installing this product.

Walls must be completely dry before installation can begin.

3 PASTING

Use Maya Romanoff Adhesive MR-RA-888 (Clear Strippable)

Apply a generous, even coat of adhesive to backside of product and let relax.

Typical relaxing time is 5-10 minutes. Perform a test on a small strip to determine appropriate relaxing time.

Allow the paste to soak into each sheet for the appropriate time before hanging in order to avoid bubbling, shrinking & seam opening.

Do not crease the wallcovering.

Do not get paste on the face of the product. **If paste gets on the face of the product, do not scrub and do not rub.** Instead, immediately and gently wipe clean with a soft, damp cloth. Do not use paper towel, wet or dry, on the product.



4 TRIMMING

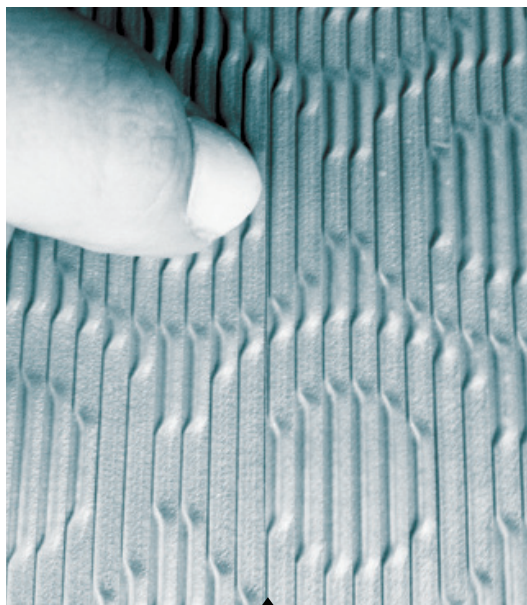
Product is approximately 56" wide untrimmed.

For best results, overlap sheets so grooves nest inside each other, then double-cut on the wall. Cut slowly and carefully, keeping your blade between the grooves.



Use a very sharp, single-edge razor blade. Use a new razor blade for each cut.

The best spot to trim the Tubular pattern (MR-FV-15) is immediately to the right or left of any inner circle. See image below.



5 HANGING

Wallcovering rolls are marked numerically. Please hang in sequence.

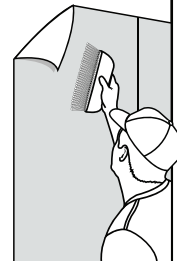
Pattern is directional. Do not reverse hang. See Pattern Orientation diagram on page 4.

Apply product to the wall using a soft-bristled nylon brush.

DO NOT USE A PLASTIC SWEEP OR A STIFF BRUSH.

A seam roller may be used to set seams. Please take proper precaution.

Use a corner seam roller to ease the material into moldings, casework, etc. prior to cutting the top or bottom of product.



After installation, the wallcovering **MUST** be wiped down. Wipe with a soft sponge using vertical strokes and clean water. Dry with a clean, soft cloth.

Slight color and/or pattern match variation may occur.

6 CARE & CLEANING

Avoid direct, bright or reflected sunlight. Our wallcoverings are not guaranteed against fading or color change.

Maya Romanoff wallcovering materials are primarily formulated for dry-use areas.

Before cleaning any product, test first on a small inconspicuous area.

Avoid getting the wallcovering excessively wet.

Do not use cleaners, solvents, or chemicals of any kind to clean Maya Romanoff products.

This product may be cleaned by blotting the soiled area with a soft, clean cloth dampened with a weak solution of a mild, clear liquid detergent. Dry with a soft cloth.

STOP!

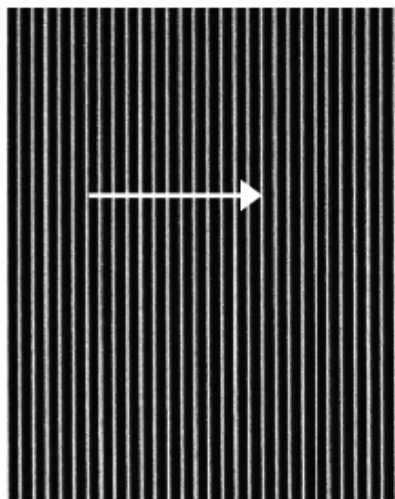
DO NOT INSTALL UNTIL YOU HAVE READ THESE INSTRUCTIONS.

Call Customer Service at 1-800-465-6909
immediately if you encounter any difficulties.

7 PATTERN ORIENTATION DIAGRAM

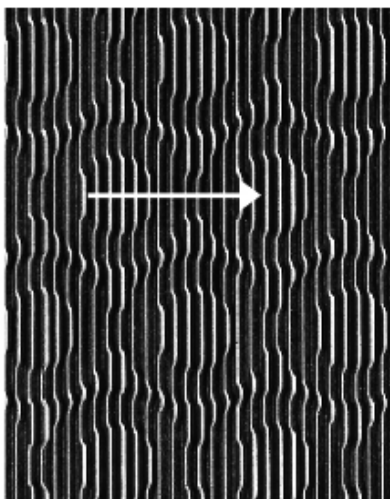
NEAT-O™

The vertical embossing should lean to the right.



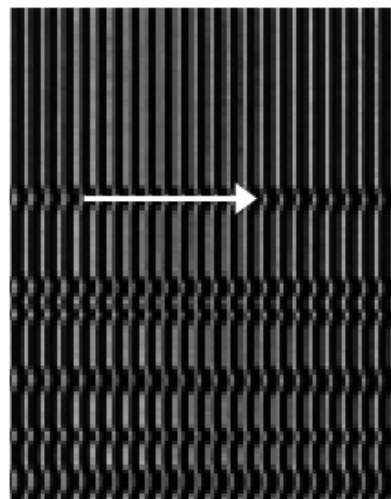
TUBULAR™

In the center of each circle, the vertical embossing should lean to the right.



OUT OF SIGHT™

The embossing of horizontal lines should point to the right.



MAYA ROMANOFF